



C O D I N G M E T R O L O G Y

Measurement & Metrology Automation

LASER SCANNING & ANALYSIS

Laser Scan Mill Inspection
Laser Scan Crusher Inspection
Custom Laser Scanning Services

CODING METROLOGY INC.



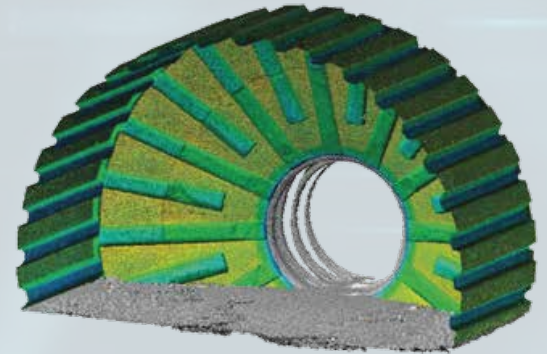
About Coding Metrology Inc.

Coding Metrology is a Canadian owned Metrology services company offering premium laser scan and analysis services, specializing in grinding mill and crusher wear component inspection for the mining industry.

We specialize in wear tracking and analysis of SAG, Ball, and Rod mill liners as well as gyratory crusher liners. We also offer services to the Architecture, Engineering, and Construction (AEC) industry. The use of state-of-the-art terrestrial scanning and in-house developed automation technology is an integral part of the business. Implementation of our quality control and assurance program is also utilized for a high-quality product.

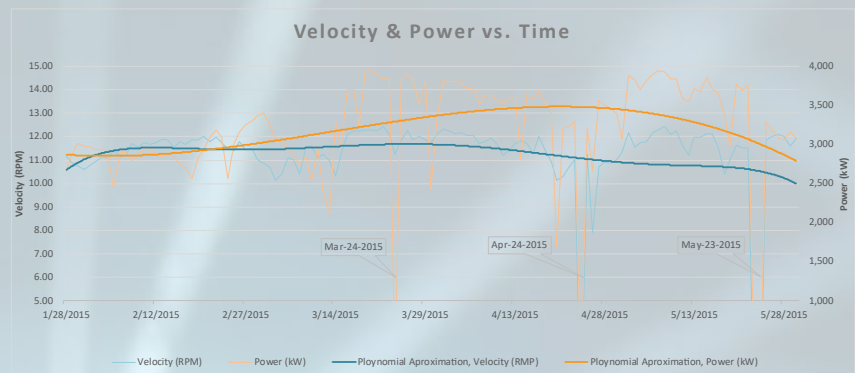
Why Mill Scanning?

- Efficiency improvement of the mill by reducing down-time
- Reducing confined space entry using remote scanning
- Observation of high wearing and/or thin regions
- Data and tonnage based liner forecasting
- Mill charge level calculation
- Accurate in producing wear profiles
- Rapid data capture as quickly as 976,000 pts/sec



Mill Efficiency

We provide detailed analysis on high and low areas of efficiency present in the operation of the mill and correlate this to liner geometry measured from scans in the mill.



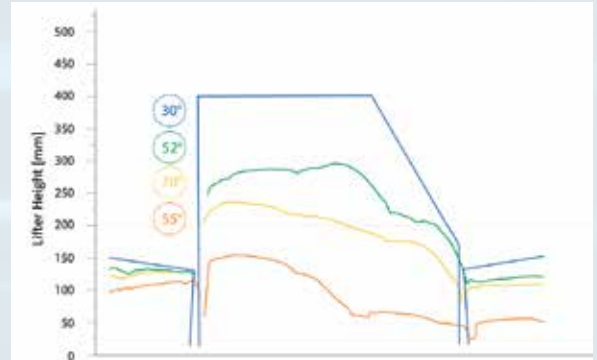
Tonnage vs. time

CODING METROLOGY INC.



Laser Scan Mill Inspection

Coding Metrology offers superior mill inspection services by means of 3D laser scan data acquisition. Our offering is different from anything on the market and focuses on the operational factors in the mill, as well as providing much relied upon maintenance data.



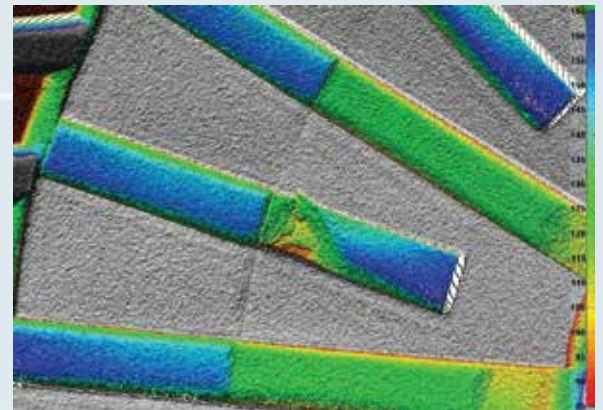
Analysis of Feed End Lifter's cross-section

Advantages of Coding Metrology Inc.

- Inspection automation
- Customizable reports
- Reduced mill downtime
- Liner optimization
- Reduced confined space

Other Services

- Liner design
- 3D CAD modeling
- Piping reverse engineering
- Plant as-built modelling



Analysis of damaged feed end liner

Algorithmic Forecasting

Utilizing formulas derived from present and historical data, the liner wear forecast dates are predicted with high accuracy. This allows the client to reline the mill exactly when needed, saving money on mill downtime, reducing overall milling costs, and using the liners to their full potential



Shell Liners Forecasting Chart



“A True Measurement For Success”

CODING METROLOGY INC.

Woodbridge, ON, Canada

+1 (647) 212-6710

tony.facciolo@codingmetrology.com

WWW.CODINGMETROLOGY.COM