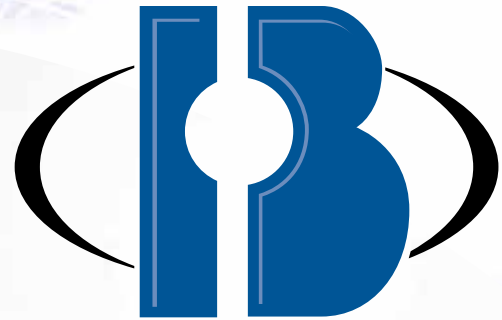
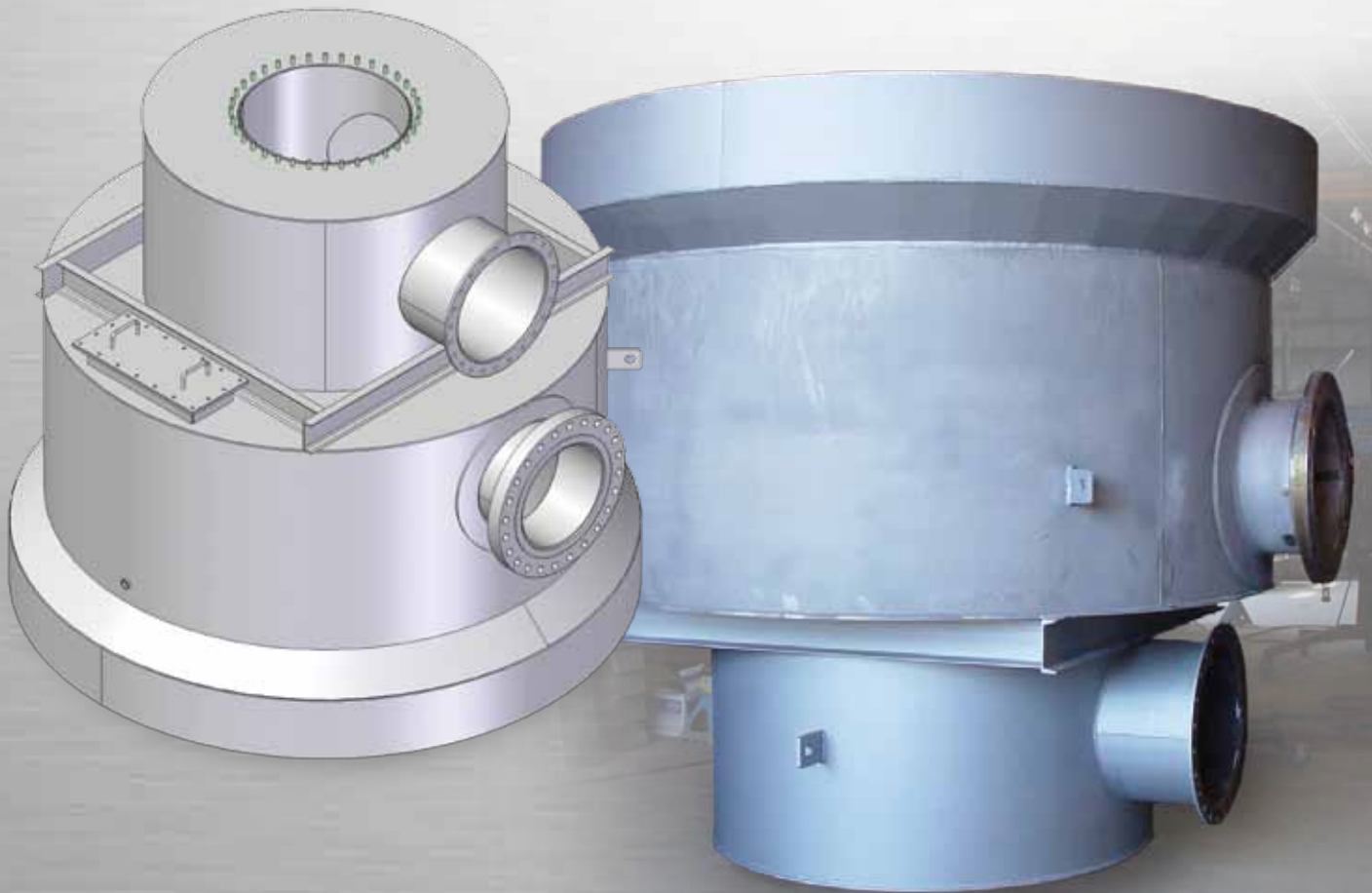



# Custom Fabrication



**BOURQUE**  
**INDUSTRIAL**  
LTD







**Founded in 1946**, Bourque Industrial Ltd provides solutions for your metal fabrication. With our well-trained and experienced staff and over 23,000 square feet of fabrication space, Bourque Industrial meets and surpasses client expectations by consistently delivering quality work in Custom Fabrication.

Featuring state-of-the-art equipment, Bourque Industrial responds and delivers to markets next door and around the globe. From fabrication through quality control and safety, we employ proven processes and technology to create lasting solutions to our client's fabrication requirements. With a proven track record in the fabrication of new equipment and the repair or replacement of existing parts and equipment, we cater to a diverse clientele including some of the largest companies in power generation, petroleum, processing and structural steel industries.

Working with carbon steel and many other alloys including aluminum and stainless steel, our certified and experienced workforce deliver precise cutting, shaping, welding and painting using the latest processes. We work with clients to determine the best process and technology for each job then ensure that every component is fabricated to exacting standards the first time. Our quality control processes means that every component meets specifications and will withstand the use it was intended for.

When the job can't come to us, we come to the job. Our mobile fleet service offers the same expertise and is fully equipped to respond quickly and efficiently to on-site work with the same level of quality and safety as if it were carried out in our facility. Whether it is in the field or in the shop, all welding conforms to CSA W59 and/or in accordance with New Brunswick Acts and Regulations as per ASME Section 9.

With an unsurpassed attention to customer needs and a strong commitment to every production schedule, coupled with our commitment to continuous improvement in quality and a core value in safety, Bourque Industrial has been rewarded with a long list of satisfied clients who count on us to meet their ever-evolving fabrication needs.

### **CNC Plasma/Oxy-Fuel Cutting Table**

- 1.5" carbon steel
- 1.25" stainless steel
- 6" carbon steel
- Cutting size 10' x 26'
- Ability to import most drawing file formats

### **Indoor Abrasive Blast and Paint Facility**

- Blast room with reclaim system (48' long x 25' wide x 16' high)
- Downdraft paint room with temperature and humidity control (50' long x 25' wide x 16' high)
- Single component or epoxy coating

### **Pinch Rolls**

- Roll plate 10' x 0.75"
- Roll angle 3" x 3" x 0.375" thick

### **Shear (hydraulic)**

- Cutting plate up to 10' x 0.5"

### **Press brake (hydraulic)**

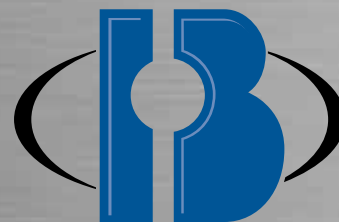
- 400 ton, 14' bed length
- 160 ton, 10' bed length

### **Iron workers (hydraulic)**

- 90 ton
- 130 ton

### **Automatic band saw**

- 20" high x 30" wide opening with 8000 lb feed capacity



**BOURQUE  
INDUSTRIAL**

L T D

85 Industrial Drive, Grandview Industrial Park  
Saint John, New Brunswick E2R 1A4 Canada

Phone 506 633-7740  
Fax 506 633-9631

[www.bourqueindustrial.com](http://www.bourqueindustrial.com)



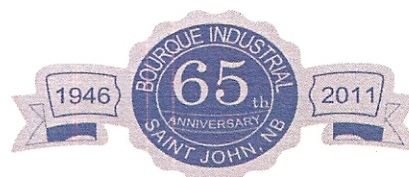


# Bourque Industrial Ltd

**Bourque Industrial Ltd.**, offers, Custom Fabrication, in house 3D detailing, field services including welding of all types structural, pressure piping and boiler repairs. We pride ourselves on working to the highest quality standards the Industries has to offer.

## Accredits

- Welding Certification
  - Carbon Steel CSA W47. 1
  - Stainless Steel CSA W47. 1
  - Aluminum Alloy CSA W47.2
  - QMS ASME VIII, B31.1, B31.3 & CSA B 51



Along with state-of-the-art equipment, skilled workforce and stringent quality control programs helps to ensure conformance to specification, top quality workmanship and on-time delivery all at a competitive price.

Bourque Industrial Ltd., provide products and services within the following Industries

- **Transportation**
- **Petroleum Refining**
- **Power Generation / Utility**
- **Process Equipment**
- **Structural Steel**
- **Mining**
- **Marine**
- **Offshore**
- **Forestry**
- **Pulp & Paper**
- **Environment / Engineering Controls**
- **Food Processing**
- **Residential**

For over sixty years **Bourque Industrial Ltd.** has provided outstanding quality and service to its many repeat customers. Customer satisfaction is our top priority.

If you are looking for a reliable contract manufacturer or custom fabricator to manufacture and assemble metal products for your company and you demand quality workmanship, on-time delivery at a competitive price, look no further than **Bourque Industrial Ltd.** centrally located in Saint John, New Brunswick, Canada.



**Department of Public Safety  
Technical Inspection Services**

**Ministère de la Sécurité publique  
Services d'inspection technique**

Company Identification: **QAM 1**  
Identification Company: **ISSUE 1 REV A**  
**September 10, 2021**

Registration No.: **638909**  
No. d'Enregistrement:

Registration Date: **2021/09/15**  
Date d'Enregistrement:

Expiry Date: **2024/09/20**  
Date d'expiration:

This is to certify that  
La présente atteste que

**Bourque Industrial Ltd & Grandview Industrial Services  
Ltd**

Is the holder of a(n)  
Est le titulaire d'un

**85 INDUSTRIAL DR  
SAINT JOHN NB E2R 1A4**

**Certificate of Registration for  
Le certificate d'Enregistrement pour**

As per the New Brunswick Boiler and Pressure Vessel Act and Regulations:  
Shop and Field Fabrication, Repair/Alteration of Pressure Vessels and Pressure Piping in Accordance with ASME  
VIII DIV 1, ASME B31.1, B31.3, B31.5 and CSA B51, CSA B52. Repairs and Alterations to Boilers in Accordance  
with ASME I, CSA B51 and NBIC NB-23.





# LETTER OF VALIDATION

The CWB acknowledges that

## **Bourque Industrial Ltd.**

85 Industrial Drive  
Saint John NB E2R 1A4 Canada

is certified to **CSA Standard W47.1**

**“Certification of Companies for Fusion Welding of Steel”**

**In DIVISION 2**

for the period **October 20, 2023 to November 19, 2024**

**Company Code: BOUMA1**

### **Scope:**

Carbon and stainless steel for structural and miscellaneous steel fabrication. Custom fabrication and tank work. Scope does not include weld overlays, weld hard facing and products that utilize welding for non-strength sealing operations only.

Reason for Issue: Renewal

Issue Date: October 25, 2023

*For the latest CWB Documents  
and forms and certification terms  
and conditions, please visit  
[www.cwbgroup.org](http://www.cwbgroup.org)*

Registrar



8260 Parkhill Drive, Milton, Ontario L9T 5V7  
1-800-844-6790 | Int: 905-542-1312 | Fax: 905-542-1318  
Email: [info@cwbgroup.org](mailto:info@cwbgroup.org) | Web: [www.cwbgroup.org](http://www.cwbgroup.org)







# LETTER OF VALIDATION

The CWB acknowledges that

## **Bourque Industrial Ltd.**

85 Industrial Drive  
Saint John NB E2R 1A4 Canada

is certified to **CSA Standard W47.2**  
**"Certification of Companies for Fusion Welding of Aluminum"**

**In DIVISION 2**

for the period **February 08, 2024 to March 07, 2025**

**Company Code: BOUMA2**

### **Scope:**

General aluminum fabrication.

Reason for Issue: Renewal

Issue Date: February 02, 2024

*For the latest CWB Documents  
and forms and certification terms  
and conditions, please visit  
[www.cwbgroup.org](http://www.cwbgroup.org)*



Registrar



8260 Parkhill Drive, Milton, Ontario L9T 5V7  
1-800-844-6790 | Int: 905-542-1312 | Fax: 905-542-1318  
Email: [info@cwbgroup.org](mailto:info@cwbgroup.org) | Web: [www.cwbgroup.org](http://www.cwbgroup.org)





**Some of the Projects we have worked on!**



**A Plein for a Client**



**Duct work for U.S. based customer**



**Part of a stack**



## Spill Containment Tank and Truss

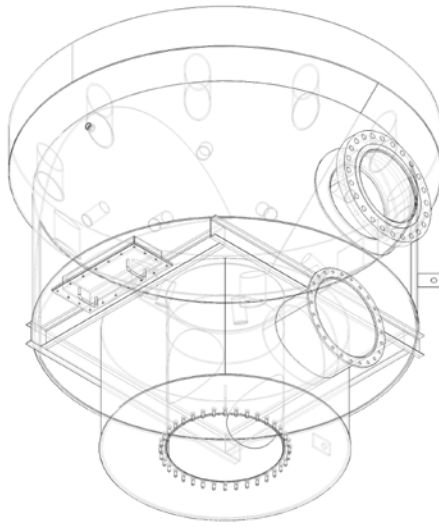


## **Blast and Paint Facility**

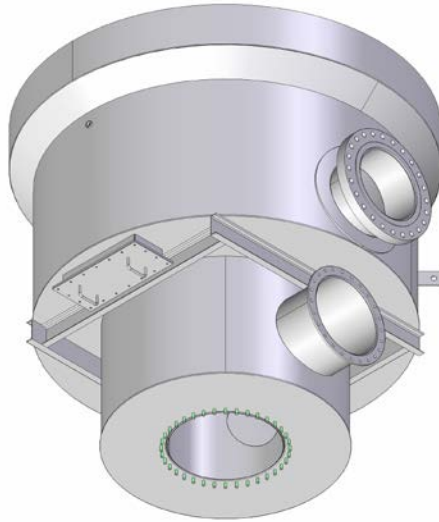


## **A Thermal Oxidizer**





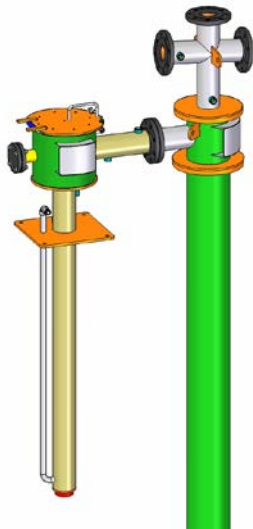
**Preliminary Drawing**



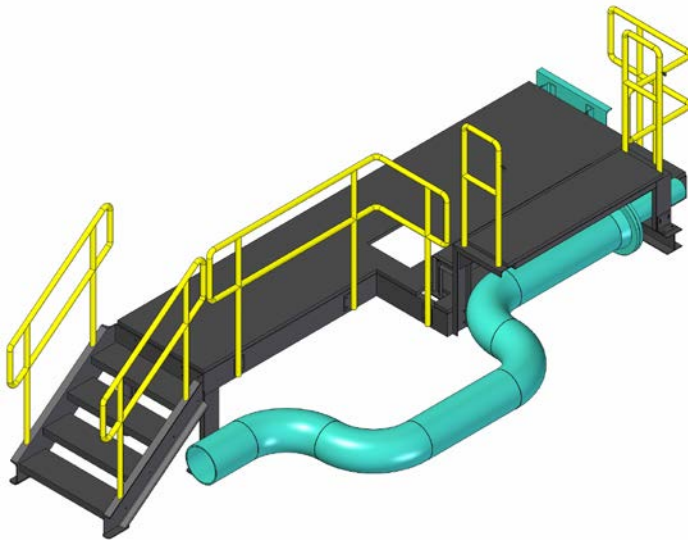
**Rendering**



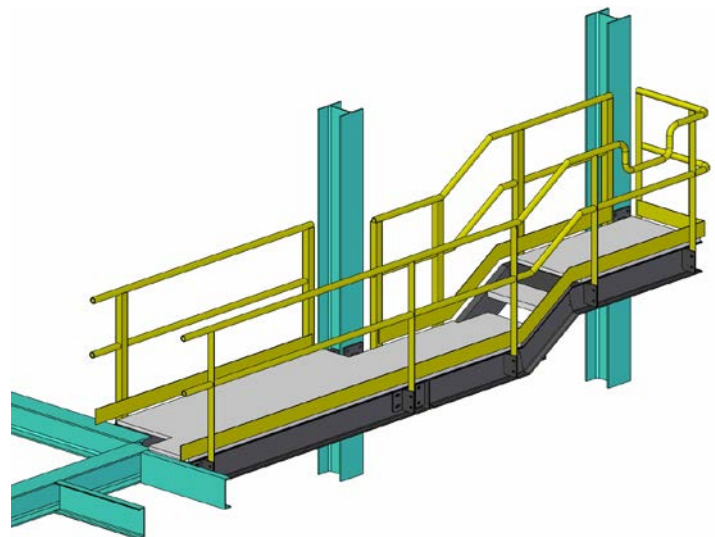
**Finished Product**



**Sulfur Seals**



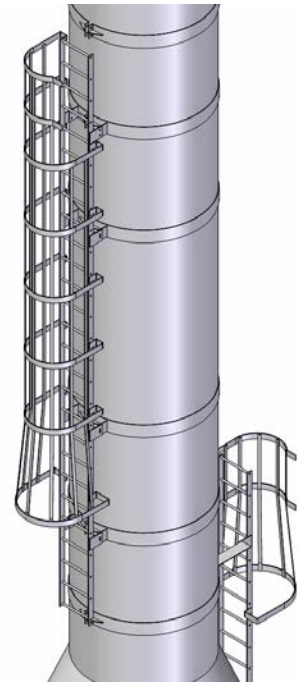
**A Platform**

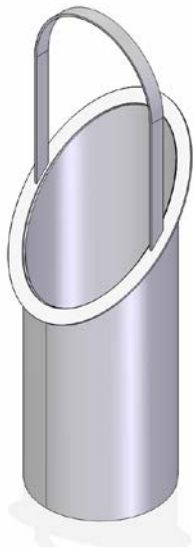


**A Diesel line access platform**

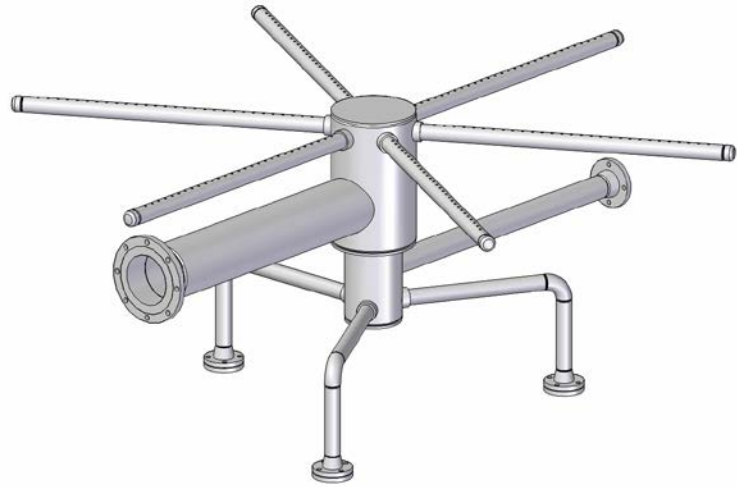
**Ladders for Towers**



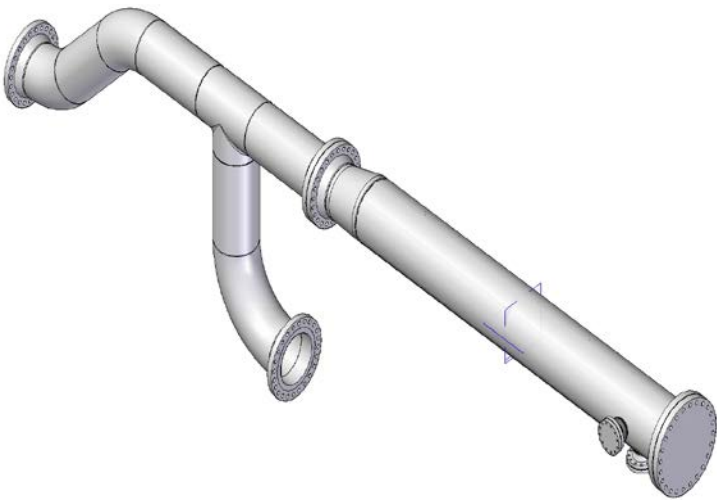




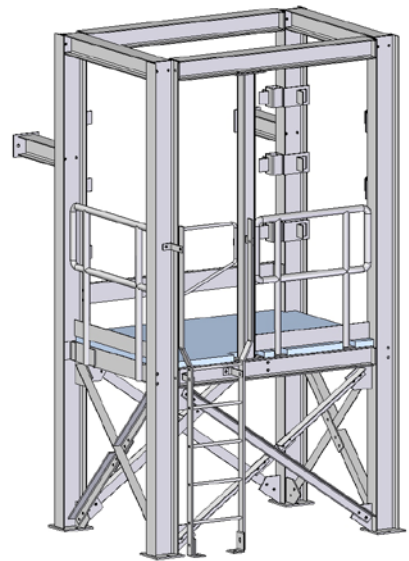
**Strainer Baskets**



**Water Softener System**



**A Pig Launcher**



**An Access Platform**





**Temporary Structural Supports for Pearl Harbor Memorial Bridge in New Haven, Connecticut**



**Pier Tables and Bearings for Pearl Harbor Memorial Bridge**



## Staging brackets for a customer in NL





**BARGE SPUD SUPPORTS**



**TEMPORARY BRIDGE SUPPOR TRUSSES**



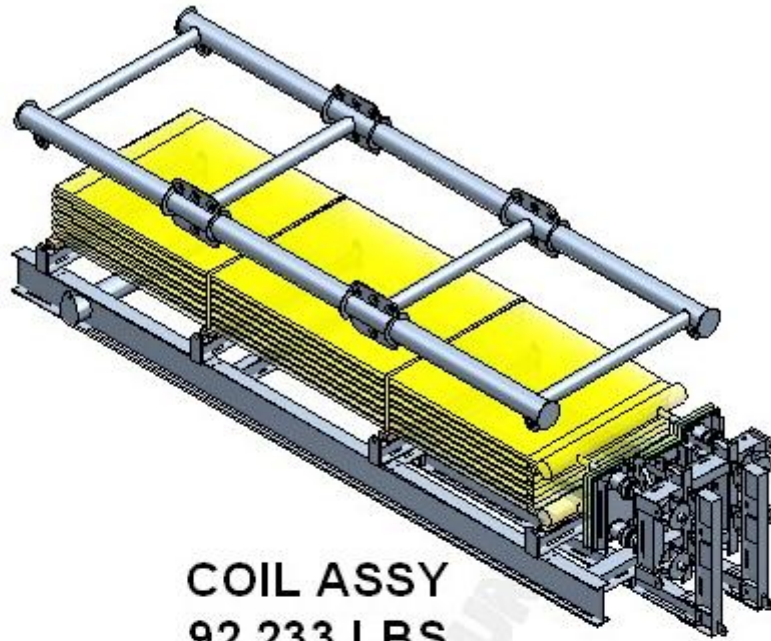


**SS Tank for a local Potash Mine.**

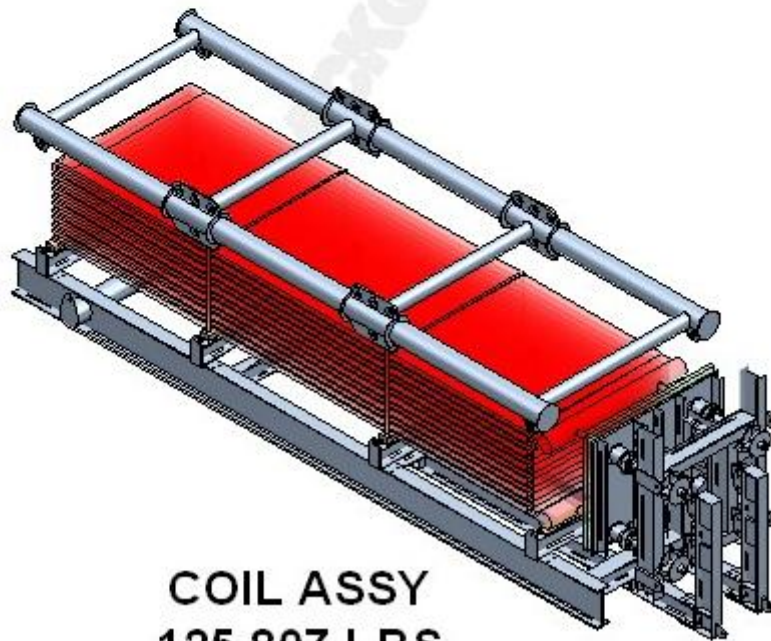


**Handrail system for local Highway Project**

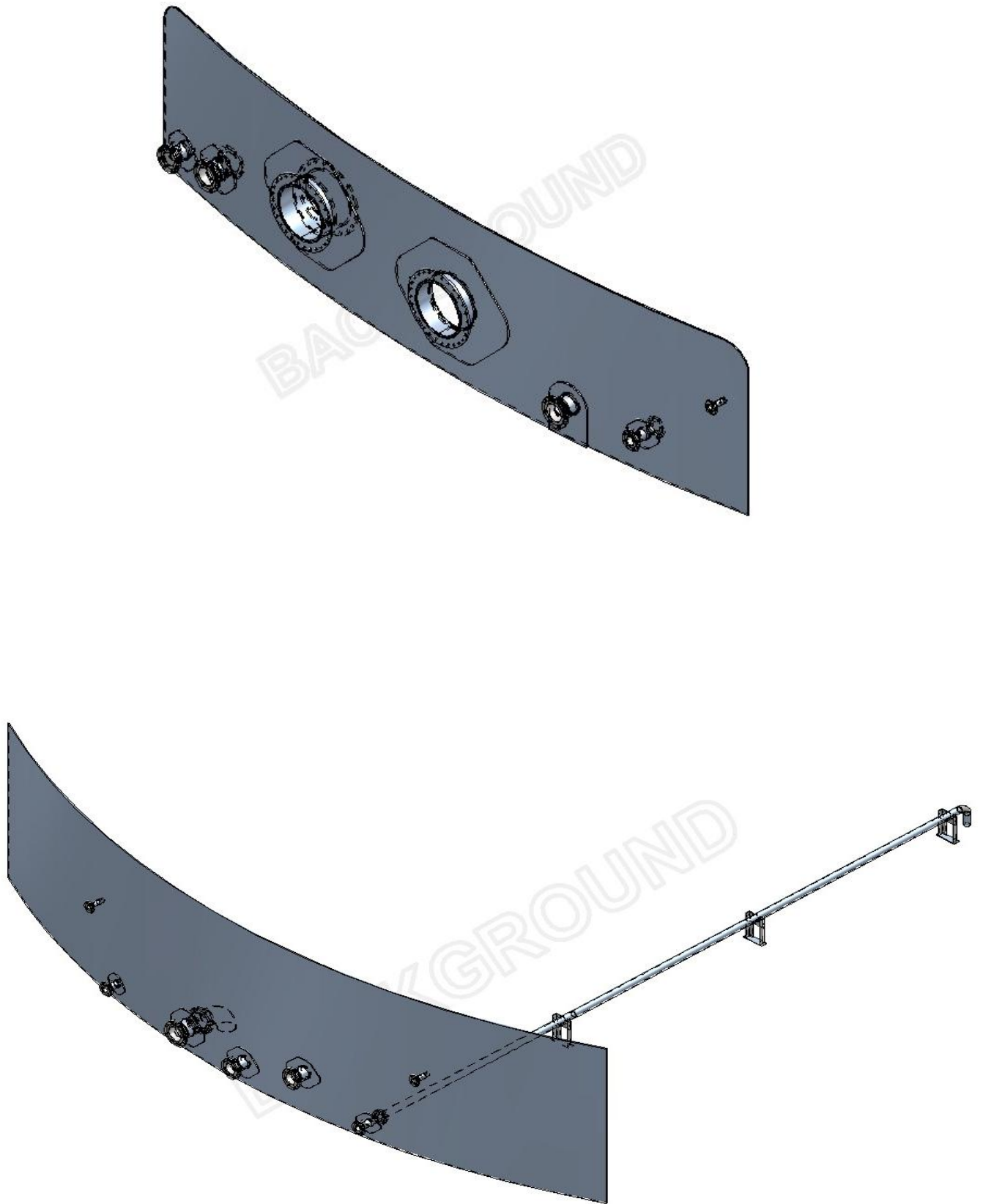




**COIL ASSY**  
**92,233 LBS**



**COIL ASSY**  
**125,807 LBS**



**Tank Insert**



**2205 Duplex Tank**





**Marine Outfitting for Tidal Power Project**



**Insulated Duct**





**Various Tank Structures heading to site or additional coatings.**





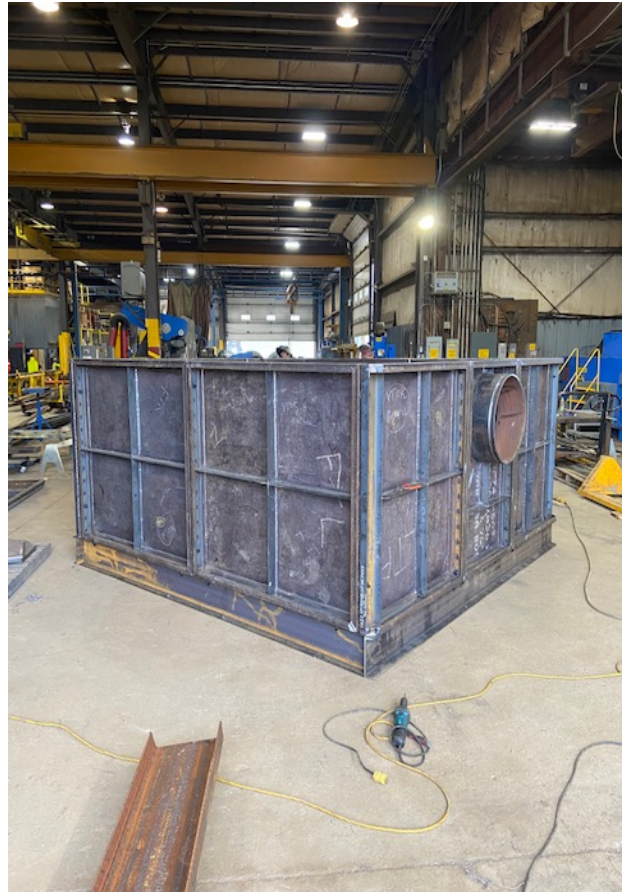
**Small Pressure vessel for local Gold Mine**



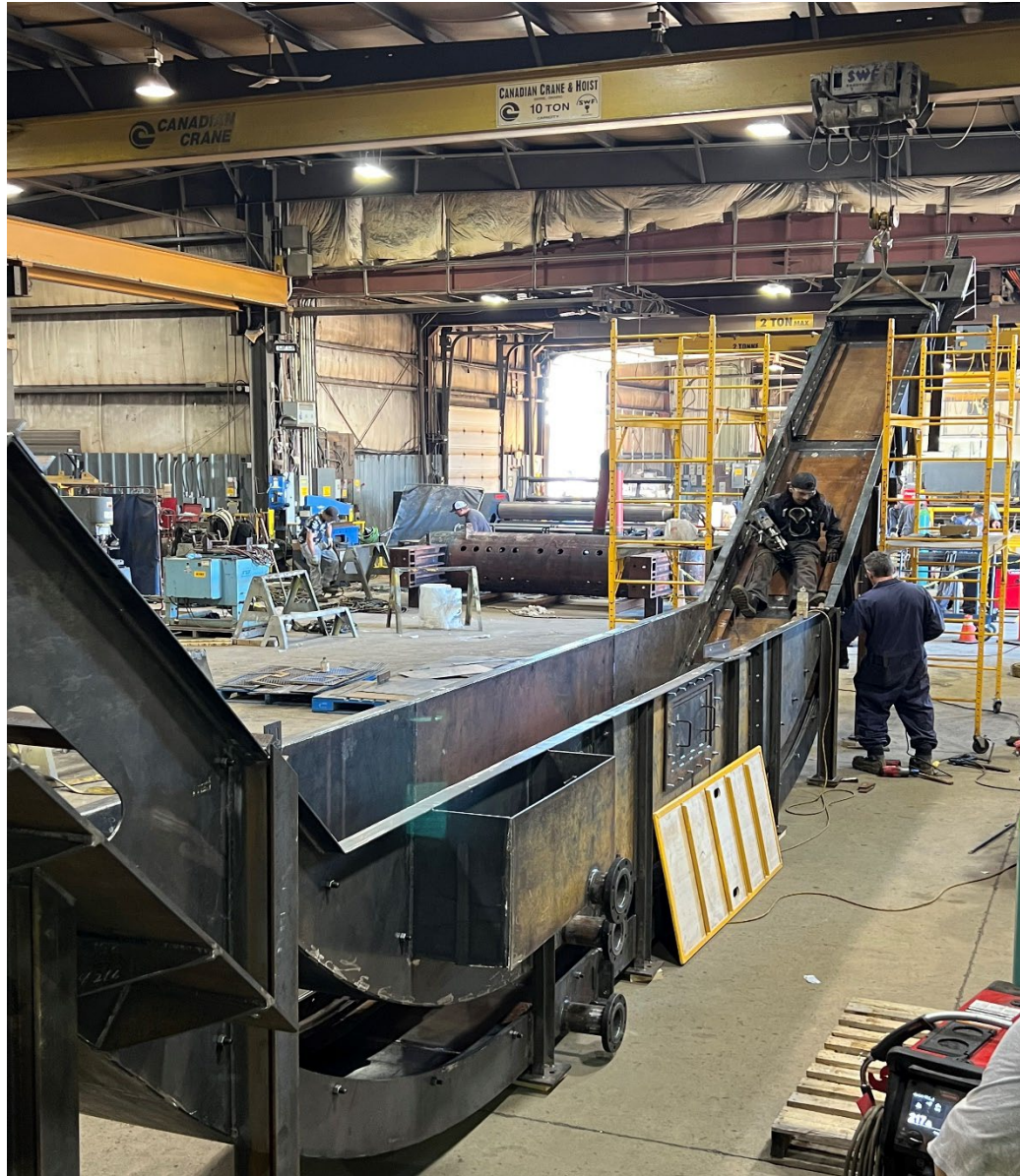


Retractable Gangway



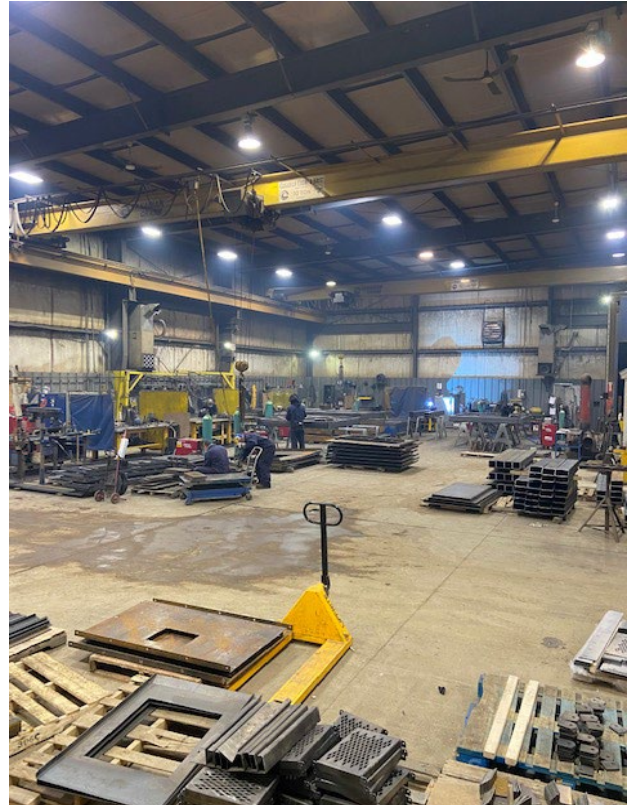






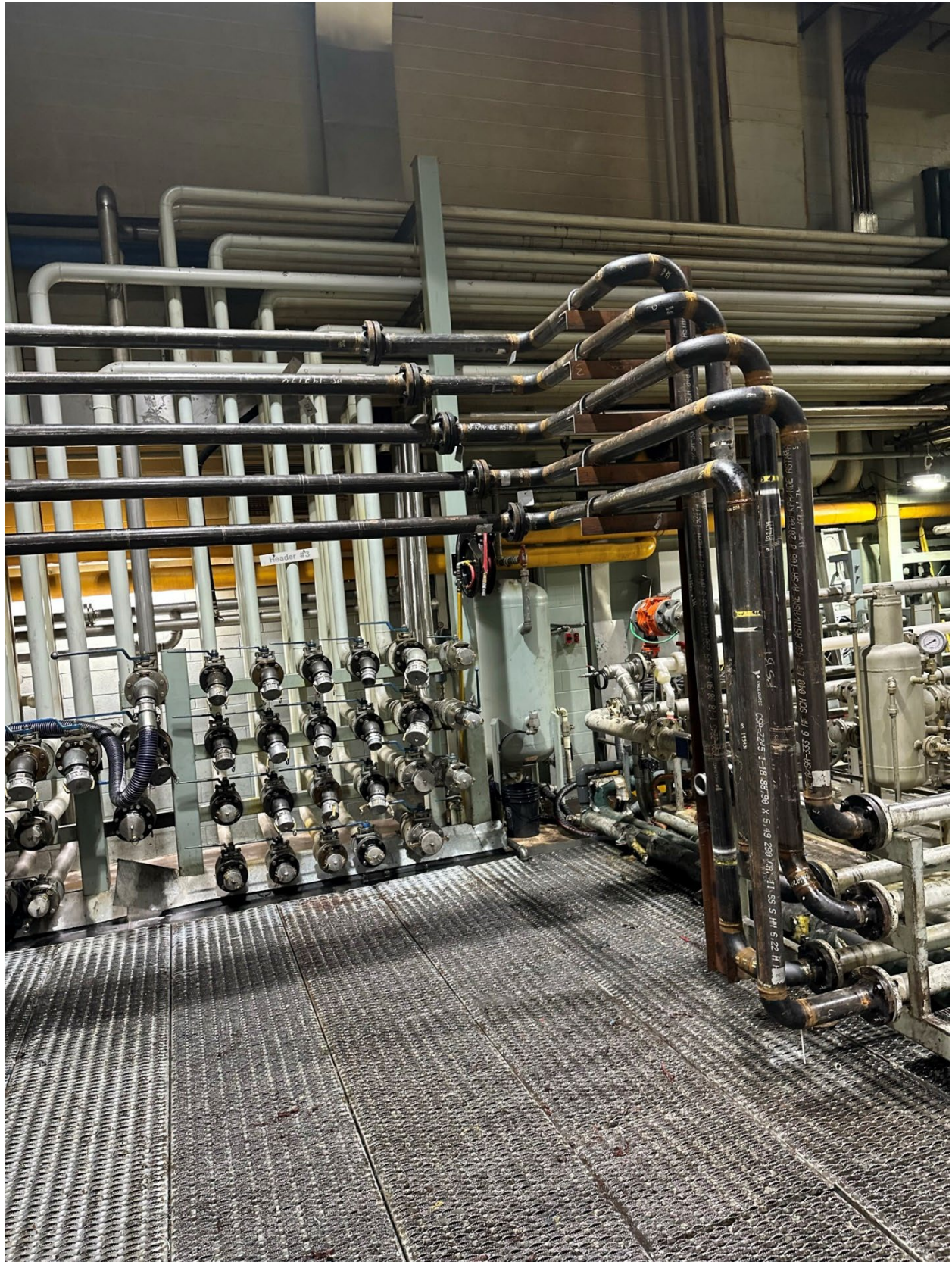
**CHAIN CONVEYOR**





**CONTRACT FABRICATION**





**PROCESS PIPING**





**PROCESS PIPING**