



## PRODUCT CATALOG

**DOMITE.COM**  
**MADE IN CANADA**

**DOMITE WEAR TECHNOLOGY INC.**  
**80 WOODSLEE AVENUE, PARIS, ONTARIO N3L 3T6 | CANADA**  
**PHONE 519.442.3129 | FAX 519.442.2604 | [info@domite.com](mailto:info@domite.com)**

# DOMITE WEAR TECHNOLOGY INC

## COMPANY BACKGROUND

Domite® Wear Parts are unique products that combine a hardened Chrome-White-Iron (“CWI”) wear face (725 BHN – 63 Rc) with a tough, ductile and weldable mild steel backing plate. Laminated together through a metallurgical diffusion bond, the result is a product that is exceptionally resistant to impact and severe abrasion while retaining ductile characteristics for easy attachment.

Domite® Wear Parts are only manufactured by Domite Wear Technology Inc. Domite® is a registered trademark and cannot be used without expressed authorization.

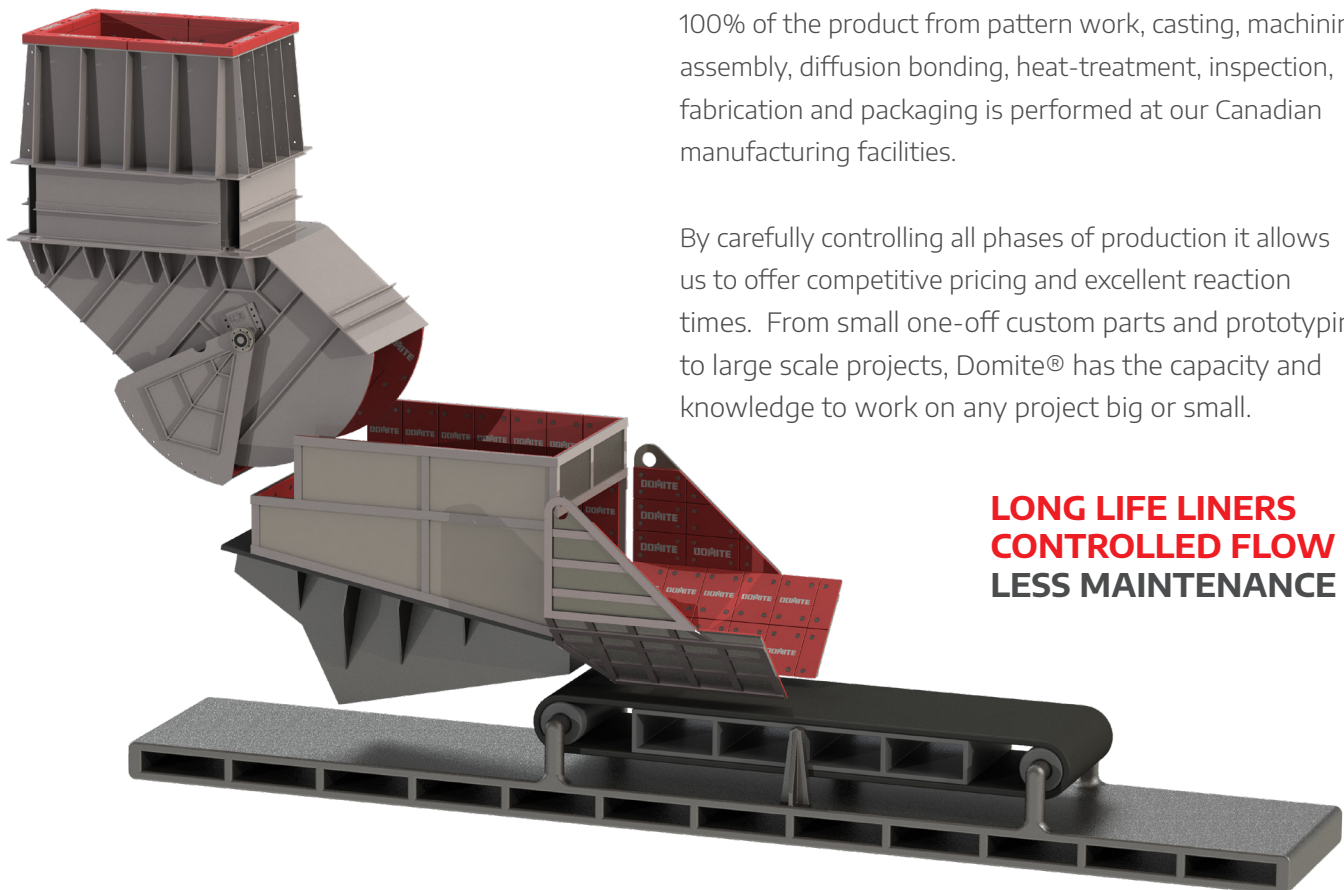
With a successful track record in solving severe wear impact problems, in many industries Domite has been treated as a generic name. Not all laminated wear plates are Domite as we maintain careful control over all phases of production, this ensures soundness, optimum micro-structure and a strong metallurgical bond are achieved.

Since 1967 Domite® has proven its durability and value to the mining and material handling industries throughout the world by supplying the premium wear resistant material.

100% of the product from pattern work, casting, machining, assembly, diffusion bonding, heat-treatment, inspection, fabrication and packaging is performed at our Canadian manufacturing facilities.

By carefully controlling all phases of production it allows us to offer competitive pricing and excellent reaction times. From small one-off custom parts and prototyping to large scale projects, Domite® has the capacity and knowledge to work on any project big or small.

**LONG LIFE LINERS  
CONTROLLED FLOW  
LESS MAINTENANCE**





# CONTENTS

SPECIFICATIONS..... 4

PERFORMANCE .....5

    HARDNESS / WEAR FACTOR

MINING APPLICATIONS..... 6

CUSTOM .....7

DOMITE WEAR SYSTEMS

    RETRO FITS / NEW BUILDS / CUSTOM..... 8

    APRON FEEDERS / LINERLESS CHUTES .....10

    DOMITE BOLTS / TAPERLINE .....11

    PRIMARY CRUSHING / MEASURING FLASK .....12

MECHANICAL WEAR PROTECTION

    GRAV LOCK.....14

STANDARD PRODUCTS

    CHOCKY BARS & WAFER STRIPS .....16

    BUTTONS / OCTO'S / DONUTS .....17

    WEAR BARS & BLOCKS .....18

    SKID BARS .....20

    WEAR PLATES .....21

    LOAF LINERS .....20

    MICRO LEDGE.....22

    GRIZZLY BARS / CAPS .....23

HEEL SHROUDS ..... 24



Don Wilding (original inventor) in a Domite Lined Blast Furnace Skip, material handled Coke & Iron Ore. Photo 1970

## SERVICES

- OFFER LONG LIFE WEAR SOLUTIONS, BASED ON EXISTING SUCCESSFUL APPLICATIONS
- EXPERT ADVICE ON HOW TO MAXIMIZE DOMITE'S® PROPERTIES
- ON-SITE PRODUCT TESTING AND EVALUATIONS
- WEAR PACKAGES, CUSTOM DESIGNS AND DRAWING LAYOUTS.
- 3D MODELING IN SOLIDWORKS
- COMPLETE FOUNDRY FOR CASTING OF PARTS
- FULL MACHINING CAPABILITIES OF DOMITE® INCLUDING CNC MILLING, CNC LATHING, SURFACE GRINDING
- CUTTING AND FITTING OF DOMITE® LINERS INCLUDING ABRASION, ARC, LASER, PLASMA, WATER-JET
- FULL HEAT TREATMENT
- STUD WELDING
- FABRICATION SERVICES
- AVAILABLE STOCK ON STANDARD PRODUCT'S
- IN HOUSE CONTROL FOR RUSH JOBS
- WORLD WIDE LOGISTICS

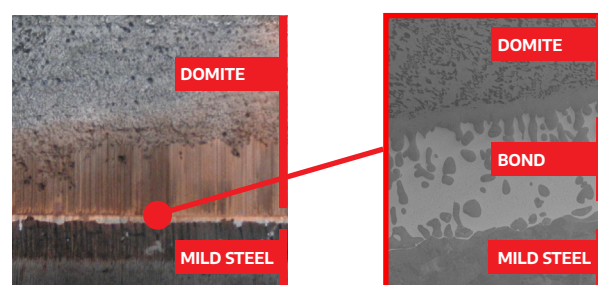
# SPECIFICATIONS

Domite® Wear Parts are a distinctive material in that they combine a hardened face of proprietary cast white iron with very high wear resistant qualities (725 BHN – 63 Rc) with the workability of mild steel (44w) to create an exceptional product that is resistant to impact and abrasion while retaining ductile characteristics and easy attachment.

To overcome the brittle nature of hardened white irons and to allow for easy installation via welding, studding, bolting or other attachments, Domite® incorporates the latest diffusion bonding technology to metallurgically bond the white iron to a tough, ductile, easy to weld mild steel backing plate (pictured). This is the key to achieving outstanding combined abrasion and impact resistance along with easy installation. Shown (right) is the strong metallurgical bond expanded with a scanning electron micrograph detailing the joined surfaces of the Domite CWI and the mild steel backing plate.

Superior to mechanical or bi-metallic jacket designs which have a tendency to fracture on impact, thanks to the metallurgical bond Domite® can withstand the toughest impact and abrasion environments. The diffusion bond has very high shear strength with a minimum 225 Mpa (33,000 psi) and will not separate.

Illustrating capillary action between the materials in the bond zone



300x ZOOM

# METALLURGY

Domite's® hardened face is an alloyed, cast high carbon chromium – molybdenum martensitic white iron. Domite® can be softened to around 400 BHN for machining purposes and then rehardened to a minimum of 725 BHN (63 Rc) for maximum resistance. The as-cast, heat treated microstructure is uniform throughout with discrete vs interconnected carbides containing primary carbides up to 1500HV.

This material was chosen from the group of white irons because of its exceptional resistance to abrasion, its responsiveness to heat treatment, its ability to develop extremely high hardness values and its significantly higher mechanical properties such as impact resistance than those of the lower alloy martensitic white irons.

# CERTIFICATION

**An ISO 9001:2015 Certification corporation.**

**100% of the product is made at our facility located in Paris, Ontario, Canada.**

**We offer complete certification and traceability over;**

- ✦ **Chemical Certification**
- ✦ **Mechanical Certification**
- ✦ **Inspection Certification**



# PERFORMANCE

## INDEPENDENT TEST RESULTS

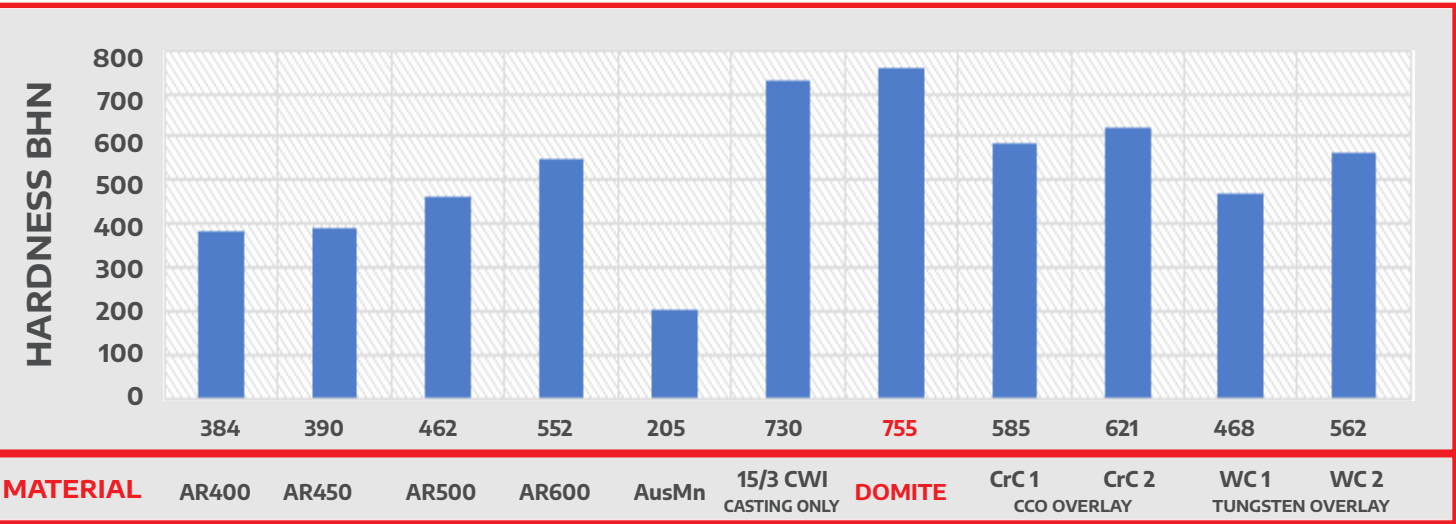
The National Research Council (“NRC”) undertook a resistance test of wear materials. It didn’t set out to but highlights Domite’s superior qualities. In terms of hardness & longevity / resistance when compared to other wear materials on the market.

Domite® was the **HARDEST** material tested (755 BHN) & matches **THE BEST** wear factor (0.4).

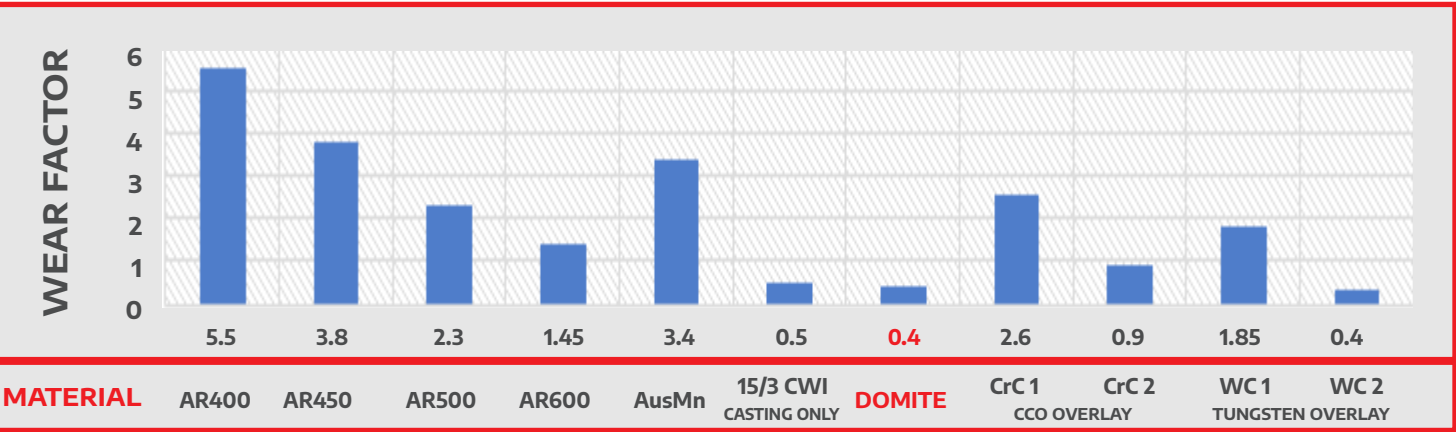
From the graph below we see that Domite® is 350 BHN harder than AR450 but lasts **9.5x longer**.

Domite® is a registered trade mark & 100% MADE IN CANADA by DWT. If its not MADE IN CANADA and not sold by DWT it’s not Domite®. There are many imported ‘like me’s / copy cats’ on the market that do not adhere to Domite’s alloy rich, stringent manufacturing procedures.

## THE HARDEST MATERIAL - DOMITE is the hardest material 755 BHN



## INCREASED RESISTANCE - DOMITE has the lowest wear rate 0.4 for Wear Materials





## WEAR LINERS & BARS

- Truck Dump
- Receiving Hopper
- Crusher Discharge Chute
- Ore Pass
- Surge Bins
- Floor Liners
- Wall Liners
- Rock Box Liners
- Skip Liners
- Loading Pocket Liners
- Flop Gates
- Dump Bins
- Plough Liners
- Concentrator Bins
- Truck Bed Liners
- Dredge Liners

## CHUTES

- Skip Discharge Chutes
- Drop Chutes
- Transfer Chutes
- Tripper Chutes
- Ore Chutes
- Discharge Chutes
- Waste Chutes
- Loading Pockets
- Measuring Flask
- Mill Feed Chutes
- Mill Discharge Chutes
- Transfer Point
- Ship Loading
- Load out V

## FEEDERS

- Apron Feeders
- Belt Feeders
- Vibratory Feeders
- Grizzly Feeders
- Pan Feeders
- Conveyor Skirting
- Concrete Augers
- Asphalt Augers

## IMPACT

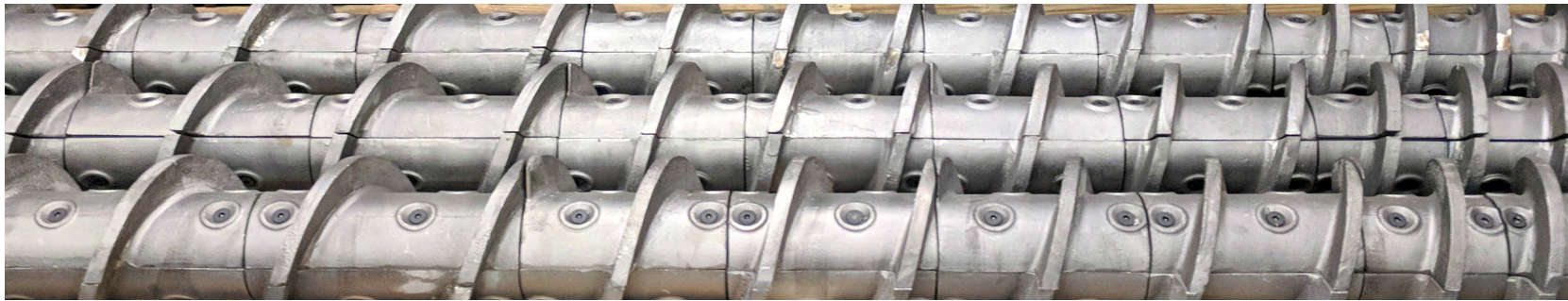
- Adapter Protection
- Rock Box / Loaf Liners
- Gyrotory Protection
- Target Plates
- Jaw Crusher Cheek Plates
- Gundlach Crusher Bars
- Cane Knife Edges
- Shredder / Hammer Tips
- Screen Plates
- Deflector Plates
- Conical Tips
- Bolt Protectors
- Grizzly Bars
- Sizing Teeth

## BUCKETS - DOMITE COMPONENTS

- Heel Shrouds
- Bolt on Lip
- Side cutters
- Roll Bars
- Floor Liners
- White Iron Cast Lips
- Tumbler Bars
- Wear Strips
- Skid Bars
- Chocky Bars
- Buttons
- Mechanical Wear Parts
- Skid Plates
- Ripper & Scarifier Parts



# DOMITE WEAR PRODUCTS



Long-life Domite® offers the ultimate in protection for extreme applications resulting in increased production, less down time + reduced maintenance costs.

Domite® has established a reputation as the solution for impact and high abrasion in the mining and material handling industries, and has numerous applications in the sugar cane, recycling, cement, mineral processing, quarry and dredging industries among others.

We have a range of standard products available in stock however custom products & alloys to suit your needs are simple for us to produce.

## CUSTOM DOMITE® PRODUCTS

With our own foundry and expert team Domite® has the ability and experience to create custom shapes and sizes specifically designed for your application. Any of our standard dimensions for any product can be easily altered to suit your preference. Non-standard shapes and sizes are easy to create and adapt to our processes thanks to our years of experience.

Virtually any design can be achieved in a Domite® casting from Elbows, Wear Flanges, Pump Housing, Cement & Asphalt Augers, Dredge Wear parts to name only a few.

## CUSTOM ALLOYS

- **NEW** - Tungsten impregnated Domite®
- **NEW** - Tungsten impregnated Alloy Steel
- **NEW** - Ceramic impregnated Domite®
- Domite® *PLUS*
- High Chrome
- Alloy steel
- Heat resistant alloys
- Corrosion resistant alloys



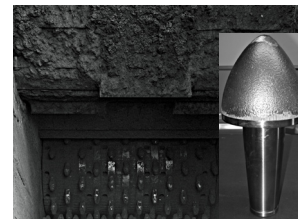
Cement Auger



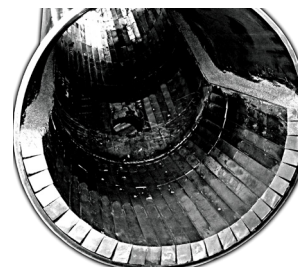
Wear Pipe Connections



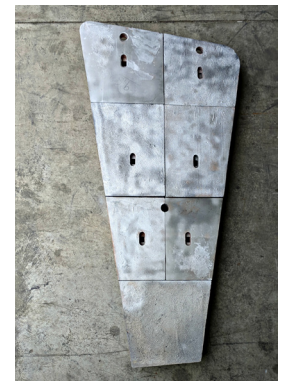
Dredge Visor Wear Block



Crushing Tooth



Domite Lined Pipe - High wear high resistance



Jaw Crusher Cheek Plate



Cast Backing Plate



Billet Run-Out-Rolls



Gundlach Crusher Bar



# DOMITE WEAR SYSTEMS

ABOVE: SUNCOR MILLENNIUM MINE DUMP HOPPER

**Performance:** *SUNCOR engineers had a targeted life of 2 years for the Domite® Wear Liners. After 26 months measured wear was < 1/3 of the thickness of the abrasion resistant wear material. Alberta, Suncor - Steepbank Mine*

## NEW BUILD / RETRO-FIT / CUSTOM DESIGN

Domite® can provide a complete solution to cover any surface area using Domite® plates and liners whether it be a new build, retrofitting of existing fixed plant or a complete custom installation. Domite Wear Technology Inc. has the track record and expertise to meet your needs.

- Beginning with a simple phone call/email/onsite evaluation followed by, design, drawings, testing, production and delivery, we can supply the ideal solution
- Our wear systems are designed to fit any installation using Domite® and comes with a complete break-down of each individual part, making it easier to re-order specific liners when needed for future rebuilds
- The result of using Domite® is a drastic increase in lifetime vs CCO or AR plates at every stage of an operation from extraction to processing

## NEW BUILD

Domite® usually works hand-in-hand with Engineering firms or with Mine Engineers on the initial design and sizing of appropriate plates and liners.

Domite Wear Technology Inc knows that flexibility and delivery is a critical aspect of customer requirements on new build designs. By having control of all aspects of production under one roof, only Domite® has the ability to complete those last moment alterations and meet critical delivery dates.

Benefits:

- The premium abrasion resistant material of choice
- Modular design allows for only targeted liners to be replaced as required
- Lightweight when compared to traditional liners for ease of installation
- Less worn liner change outs significantly reduce Health and Safety risks for maintenance crews
- Versatile attachment options

## NEW BUILD - EXAMPLE

Location: Alberta Oilsands, Syncrude's Aurora mine site. (as pictured)

Fixed Plant: Multiple Large Dump Hoppers

Domite® worked with the Engineering firm and Fabricator to provide hundreds of Wear Liners for their Crusher Stations. The lower areas of the hopper walls subject to the most severe wear / impact are lined with Domite® Wear Liners, the upper walls of the hopper were lined with AR Steel.

Material Handled: The Dump Hoppers handle 11,000 tons of Oilsands per hour at max production

Maximum hopper capacity 800 Tonnes



## RETRO - FIT

Domite® can easily match existing bolting patterns and supporting wall frames of current structures replacing AR400 - 500 / CCO plate to significantly reduce maintenance and rebuilds. With no need for complicated redesigns and costly fabrication downtime, Domite® can be swapped for existing plates/liners to provide a drastic extension of life to fixed plant; Hoppers, Surge Bins, Chutes, Transfer Points and Apron/Vibratory feeders

### Benefits:

- Increase lifespan of equipment/fixed plant and significantly reduce maintenance costs without redesign
- Domite® can be made to match existing liner sizes and attachment patterns
- Traceability of all part numbers for easy installations and re-orders

## RETRO FIT - EXAMPLE

Location: Underground Gold Mine. (as pictured)

Fixed Plant: Skip Discharge Chute

Domite worked with the Mine and 3rd party to custom make 2" thick Domite® Wear Liners to retro fit AR 400 liners originally installed. Wear Liners manufactured & delivered by Domite® met the mines tight shut down & maintenance requirements, & were installed without requiring adjustment onsite

Material Handled: 8" – Abrasive Hard Rock Ore and Waste

Discharge chute capacity 20,000 tons per day



## DOMITE® - WEAR LINER MANAGEMENT ANALYTICS

The wear liner analytics are designed for management to track and record the full details of each individual plate in operation. Domite® uses this program to record relative wear life and tonnage to provide analysis of performance using quantitative statistics on; longevity, tonnage, reduction of maintenance costs to determine true (liner) cost per ton, ensuring maximum return on investment.

The system also records the exact dimensions and features of every plate to make re-ordering individual plates simple and easy. Using a unique part number tracking system there is no need for costly dimensional verification and detail searching. Taken from a general assembly drawing, Domite® will keep track of all the details so each plate/liner arrives to exact specification, ready to fit.



**LONGEVITY**  
TEMPORAL AGE



**TONNAGE**  
THROUGHPUT



**REDUCTION**  
MAINTENANCE  
COSTS/HOURS



**METRICS**  
TO DETERMINE  
TRUE COST/TON

## CUSTOM BUILD

Domite® can be used to modify any existing liner shape and design to meet individual requirements. From changes in thickness, to attachment methods, to arrangement patterns, to additional areas outside of the original installation, Domite® specializes in redesigning dated or faulty OEM installations. By moving away from larger sized sheets and heavy sections requiring special lifting features and installation crews, Domite® provides a segmented modular change out approach to reduce down time and decrease overall operating costs

### Benefits:

- Thickness adjustments up to 4" + (100 mm+) thick for maximum life expectancy
- Adjustment of locking or attachment system to allow for ease of installation or future targeted replacements
- Flexibility to make one off liners to suit any area, taper, edges or transition points



## CUSTOM BUILD - EXAMPLE

Location: Alberta Oilands, Imperial Oil, Kearl Lake (as pictured)

Fixed Plant: Double Dump Hoppers/Surge Bins

These Giant Double Dump Hoppers/Surge Bins use Domite Wear Liners in the most severe wear areas. Domite worked with the Engineering firm and Fabricator to provide hundreds of Wear Liners, in many cases one off Wear Liners had to be produced to meet unique contours of the walls of the Dump Hoppers, something the company was able to comfortably accommodate.

Material Handled: These Hoppers/Bins are built to handle the extremely abrasive Athabasca oilsands and are subject to impact, sometimes at temperatures as low as -40 degrees and as high as + 30 degrees. Domite was placed in the lower parts of the hopper which sees the most severe wear, CCO lines the upper walls.

Maximum Hopper capacity 2,350 Tonnes

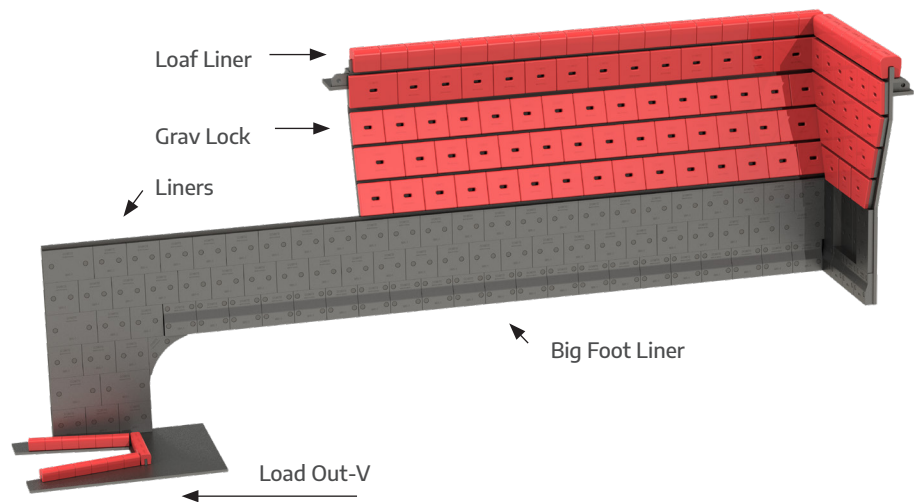


# FEEDERS | PRIMARY/RECLAIM

- Domite offers the full solution, in high load, high abrasion operations
- Under a crusher, surge bin or reclaim stock pile
  - Domite Loaf liners around the lip of the Surge bin, Drop Chute or Stock Pile
  - Domite Grav Locks, Hanging or Bolted liners in the Surge bin or Drop Chute
  - Domite Capped bolt / Weld in or Studded liners in the Feeder
  - Domite Blocks, Liners & Mini Loaf on your Load Out-V for efficient conveyor loading
- Proven product vs AR & CCO, lasts exponentially longer, relied upon for over 40 years
- Feeder Liner thickness range from 1" to 3"+ depending on material type & volume
- Big Foot Liners for lower row to provide more resistance where its needed
- Custom alloy offering, Domite Ceramic in Beta testing (talk to us for a trial).
- Where required cast in Lugs for safe handling
- Ideally suited to all material types & sizes



Big Foot Liner with Domite Bolts

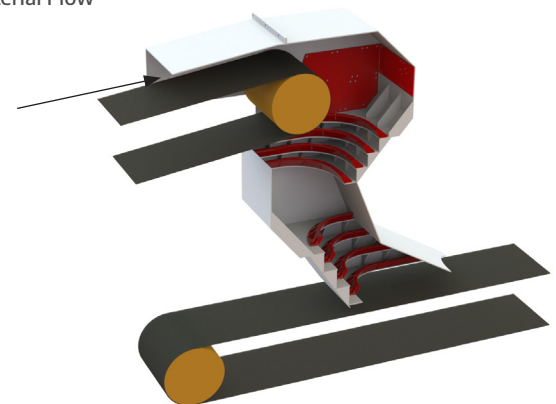


# LINERLESS TRANSFER CHUTES

## NEW - ROCK BOX TECHNOLOGY

- Control's material flow, velocity & direction through rock boxing
- Removes high impingement & wear points in chutes
- Reduced chute wear vs Liners thanks to material on material wear
- Reduced maintenance intervals
- 5-6x Life of AR500 (which lasted 2 weeks)
- Handles 6,000 tph
- Safer than handling large liners in confined spaces
- Reduced unique part inventory, simple components & install
- Discrete Element Modeling of each application for optimal chute layout, design & flow

Material Flow





# DOMITE BOLTS

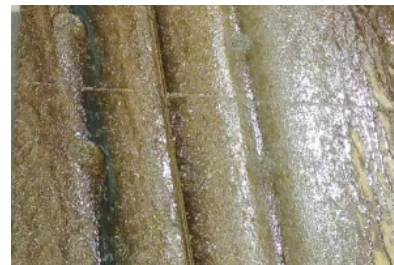
There is a wide range of options available to attach Domite wear products. Historically this has been via welding, bolting, studding, drilling & tapping or casting a backer plate that fits on a mounting plate.

Domite has come out with an **Industry first** & are offering a Domite Capped Bolt. These virtually eliminate the premature wear caused with bolts (channeling & tear dropping in and around the bolt hole) & liner breakout experienced with studs & over torquing.

- The Domite Bolt fills the void of the corresponding bolt hole in the liner creating a new flush wear face.
- Full range of thickness available
- Easy install, same tools as a regular bolt



Left hole: Traditional style csk bolt hole  
Right hole: Utilizing a Domite Bolt



Examples of erasing / channeling caused by the bolt holes in the liner, eliminated using Domite Bolts

# DOMITE - TAPER LINE

Domite offers a unique solution for chutes that experience preferential wear & liner wash between the vertical joints of liners. This type of wear is commonly found in brick staggered liner layouts (left) which experience high volume/wet/granular throughput.

Domite Taperline utilizes a Diagonal liner layout (Right). This reduces the ability of material to build up velocity down a common plain, which is the start of liner spalling & wear propagation.

- Range of liner thickness available, cast & laminated
- Accommodate Domite Bolts or Standard
- Common liner configuration to reduce unique parts



Common Offset Brick Style Layout



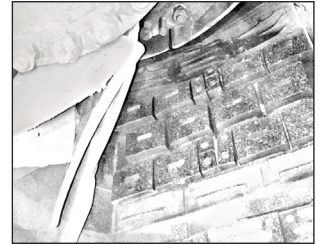
Taperline - Diagonal Liner Layout

# CRUSH / CONVEY

**LONG LIFE DOMITE® - OFFERS THE ULTIMATE IN PROTECTION FOR EXTREME APPLICATIONS RESULTING IN INCREASED PRODUCTION, LESS DOWN TIME + REDUCED MAINTENANCE COSTS.**



**SPIDER ARM / RIM PROTECTION -**  
DOMITE OCTAGON, CHOCKY BARS,  
BUTTONS, BLOCKS, GRAV LOCK



**LOWER HUB / SHELL PROTECTION -**  
DOMITE OCTAGON, GRAV LOCK



**SHEAR / STRIKE OFF BAR -** CAST BAR,  
DOMITE PLATE OR GRAV LOCK



**SURGE BIN / SILO / STOCKPILE LIP PROTECTION -** LOAF LINER, CAST LIP / BLOCK, TRANSFER POINT LINER



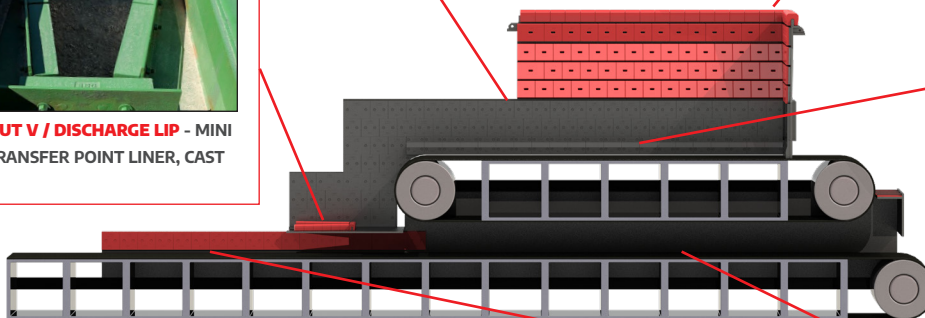
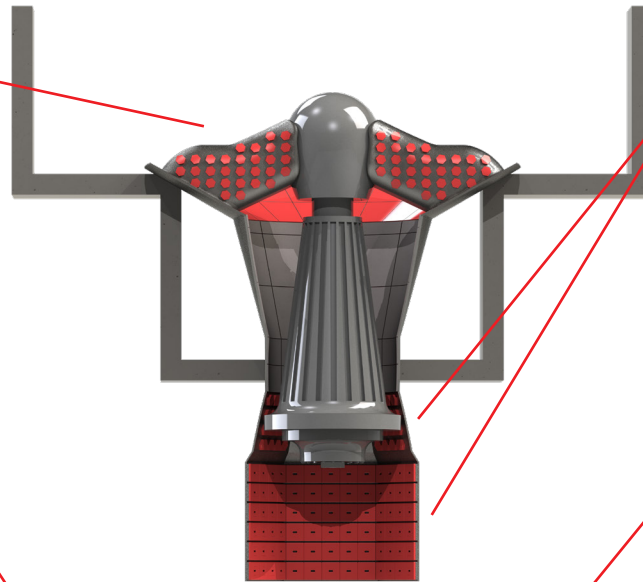
**LOAD OUT V / DISCHARGE LIP -** MINI LOAF, TRANSFER POINT LINER, CAST BLOCKS



**APRON FEEDER LINERS -** BIG FOOT, DOMITE BOLTS, GRAV LOCK, DOMITE CERAMIC (IN BETA TESTING)



**SKIRTING -** MANY OPTIONS / PROFILES, BOLT, MECHANICAL, RAISED LIP, 180 DEG. REVERSIBLE



**SUPERIOR PERFORMANCE -**  
PROPRIETARY DOMITE® ALLOYS;  
CHROME. TUNGSTEN. BORON.  
CERAMIC. MOLY

**LONGEVITY -** DOMITE® LASTS EXPO-  
NENTIALLY LONGER (5 - 10X) THAN AR  
PLATE / TOOL STEEL, CHROME  
CARBIDE OVERLAY & CAST STEELS

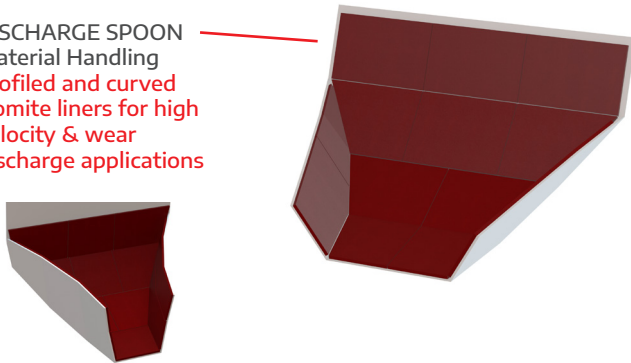
**RELIABILITY -** 10X MORE IMPACT  
RESISTANT (NO BREAK OUT) THAN  
CAST WHITE IRON.

**EASE -** BOLT, STUD, WELD, MANY  
ATTACHMENT OPTIONS. NO PRE OR  
POST HEAT TREAT REQUIRED,  
SIMPLE INSTALLATION PROCEDURES

# MEASURE / LOAD

## DISCHARGE SPOON

**DISCHARGE SPOON**  
Material Handling  
Profiled and curved  
Domite liners for high  
velocity & wear  
discharge applications



## LOADING POCKET

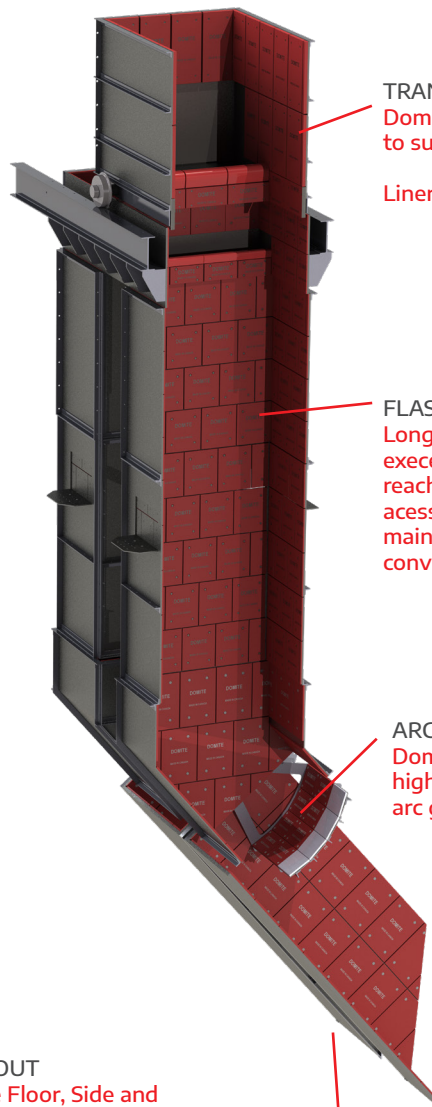
**TRANSFER CAR**  
Domite high wear Lip Liners  
to support rock boxing.  
  
Liner package for transfer car

**FLASK**  
Long life Domite liners are an  
excellent choice for hard to  
reach areas with restricted  
access. Require less  
maintenance than  
conventional liners.

**ARC GATE**  
Domite Liners for  
high wear  
arc gate

**LOAD OUT**  
Domite Floor, Side and  
Skirting Liners

**DISCHARGE CHUTE**  
Thick Domite floor liners and  
thinner skirting liners. Matching  
the material to the wear  
requirement

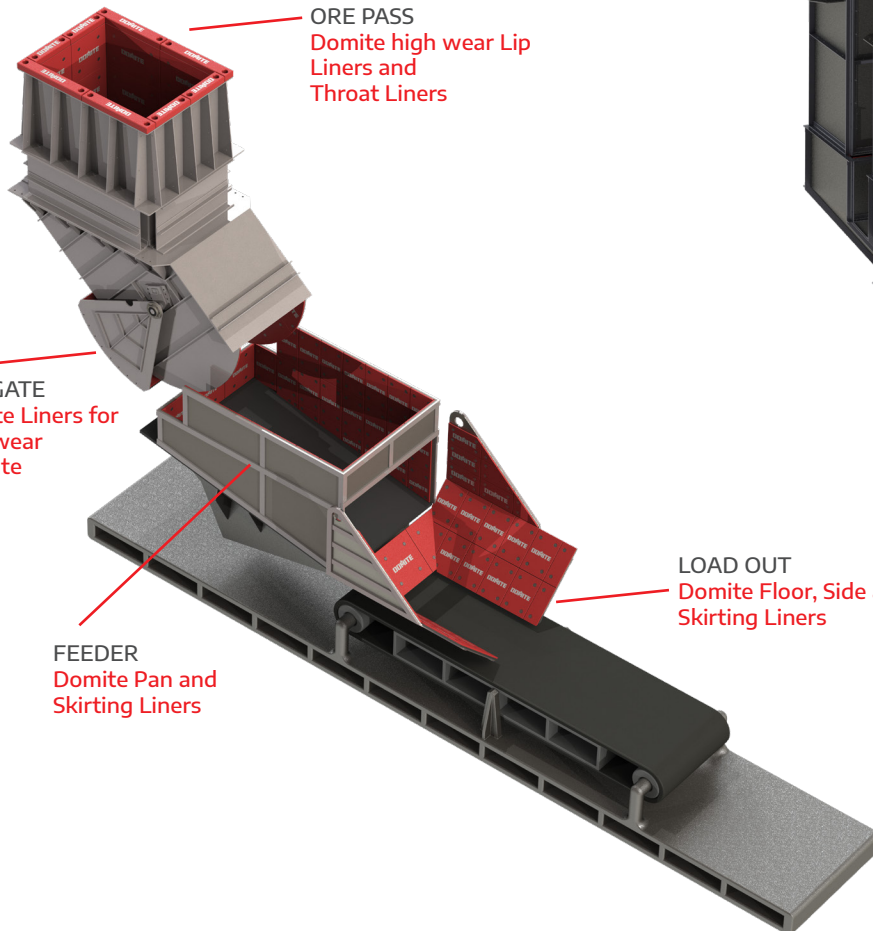


## LOAD OUT

**ORE PASS**  
Domite high wear Lip  
Liners and  
Throat Liners

**ARC GATE**  
Domite Liners for  
high wear  
arc gate

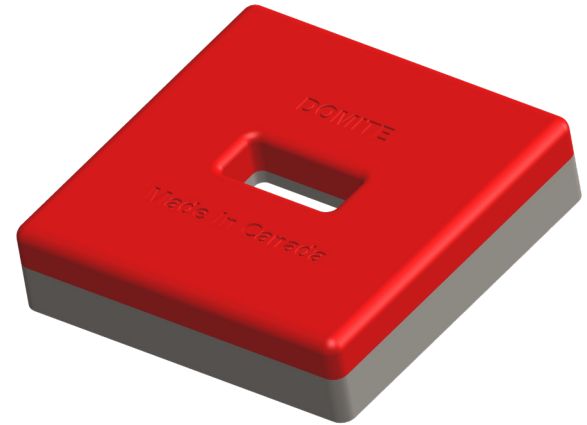
**FEEDER**  
Domite Pan and  
Skirting Liners





# GRAV LOCK

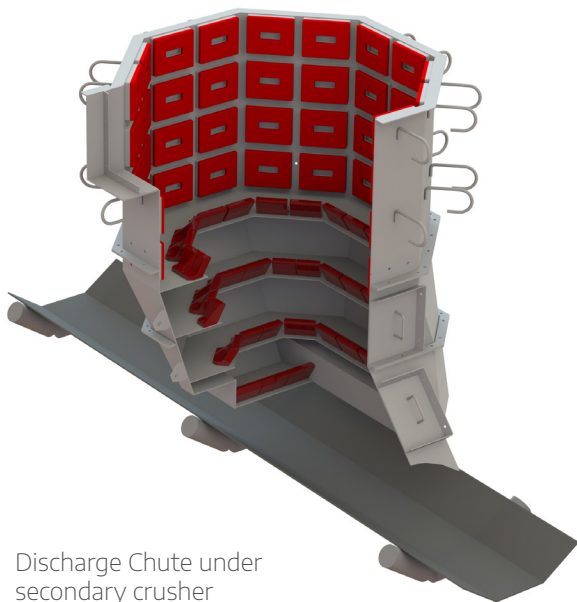
## MECHANICAL WEAR PROTECTION



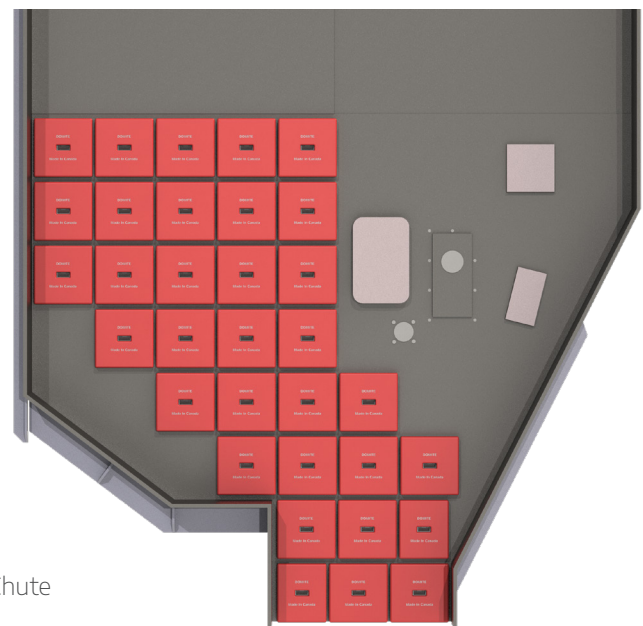
- Domite® Wear Technology offers a Superior **Bi-Metallic** mechanical wear runner.
- Alloy Rich - Chrome, Moly & Tungsten Carbides
- The Domite® wear runner features a **725+ Brinell Wear Face** (vs competitors 320-400 BHN) for maximum **Abrasion & Impact resistance!**
- **Quick & Easy installation.** Once the base plate is welded in place simply slide the Domite® wear cap over top.
- Engineered internal tapers hold the Wear Cap to the Base plate.
- The runner includes **4x wear indicators**, when the Wear material is worn down and an indicator visible, you or your team will know its time to change it out.
- Safer & Easier to change than conventional weld/bolt on wear liners, greatly reducing change out & downtime.
- The Re-usable Base plate is protected on all 4 sides.
- Facilitates one sided attachment.
- Gravity held and Lockable options available.



Impact Wall



Discharge Chute under  
secondary crusher



Head Pully  
Discharge Chute

# APPLICATIONS

**725+**  
**BHN**

## MOBILE PLANT

- Suitable for Dipper, Hydraulic Shovel and Wheel Loader Buckets
- Recommended for the bottom & inside of buckets

## FIXED PLANT

- Ideal where access and maintenance is restrictive
- Suitable for confined spaces
  - Drop Chutes, under gyratory crusher,
  - Transfer Points
  - Apron & Reclaim Feeders
  - On & around Crushing and Processing equipment

All materials have a high heat and corrosion resistance making it suitable for Slag & Dredge applications

## GRAV LOCKS UNDER GYRATORY CRUSHER - FACILITATES EASY CHANGE OUTS.

- ONE SIDED ATTACHMENT
- NO WELDING, (REDUCE CONFINED SPACE / HOT WORKS ISSUES) NO BOLTING
- HIGH ABRASION RESISTANCE
- PROVIDES WEAR INDICATORS FOR EASY INSPECTION





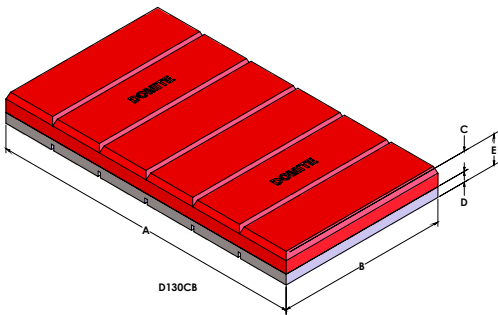
# CHOCKY BARS

Easy to use with no excessive cutting when compared to sheets or plates, Domite® Chocky bars can be formed onto inside or outside contoured surfaces to provide an extra level of protection for wear and impact applications.

Used for a variety of wear protection on buckets, excavators, dragline machines or for lining chutes and rock box edges Domite® Chocky Bars can be used in conjunction with other wear products to give you that extra advantage.



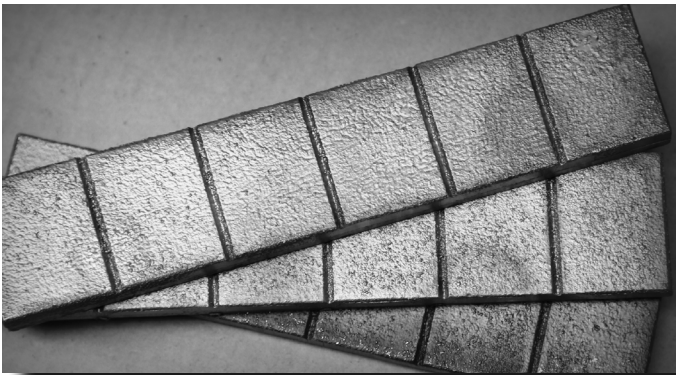
DOMITE CHOCKY BARS						
PART NO.	Length (A)	Width (B)	Domite® (C)	Backing (D)	Thickness(E)	Weight
	in. (mm)	in. (mm)	in. (mm)	in. (mm)	in. (mm)	lbs. (kg)
D 25 CB	9 ½" (240)	1" (25)	19/32 (15)	5/16" (8)	29/32" (23)	2.0 (0.9)
D 38 CB	9 ½" (240)	1 ½" (38)	19/32 (15)	5/16" (8)	29/32" (23)	3.3 (1.5)
D 50 CB	9 ½" (240)	2" (50)	19/32 (15)	5/16" (8)	29/32" (23)	4.5 (2.0)
D 65 CB	9 ½" (240)	2 ½" (65)	19/32 (15)	5/16" (8)	29/32" (23)	6.0 (2.7)
D 90 CB	9 ½" (240)	3 ½" (90)	19/32 (15)	5/16" (8)	29/32" (23)	8.0 (3.6)
D 100 CB	9 ½" (240)	4" (100)	19/32 (15)	5/16" (8)	29/32" (23)	9.2 (4.2)
D 130 CB	9 ½" (240)	5" (130)	19/32 (15)	5/16" (8)	29/32" (23)	12.5 (5.7)



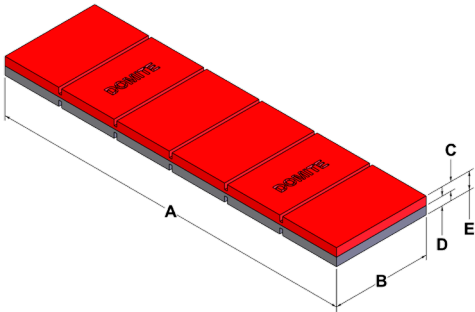
# WAFER STRIPS

Thinner version of the popular Chocky Bars, Wafer Strips follow the same concept. Easy to cut, they can be used as pads on in applications where weight is a major consideration.

As with Chocky bars Wafer bars can be curved to fit concave and convex surfaces & broken up to fit specific sizes. They are excellent at providing additional protection to paddles, blades, flights & augers seeing abrasive wear; sand & slurry mixtures to name a few.



WAFAER STRIPS						
PART NO.	Length (A)	Width (B)	Domite® (C)	Backing (D)	Thickness(E)	Weight
	in. (mm)	in. (mm)	in. (mm)	in. (mm)	in. (mm)	lbs. (kg)
D 25 WS	9 ½" (240)	1" (25)	¼" (6)	¼" (6)	½" (12)	1.3 (0.6)
D 38 WS	9 ½" (240)	1 ½" (38)	¼" (6)	¼" (6)	½" (12)	2.0 (0.9)
D 50 WS	9 ½" (240)	2" (50)	¼" (6)	¼" (6)	½" (12)	2.7 (1.2)
D 65 WS	9 ½" (240)	2 ½" (65)	¼" (6)	¼" (6)	½" (12)	3.5 (1.6)
D 90 WS	9 ½" (240)	3 ½" (90)	¼" (6)	¼" (6)	½" (12)	4.7 (2.1)
D 100 WS	9 ½" (240)	4" (100)	¼" (6)	¼" (6)	½" (12)	5.3 (2.4)
D 130 WS	9 ½" (240)	5" (130)	¼" (6)	¼" (6)	½" (12)	6.7 (3.0)





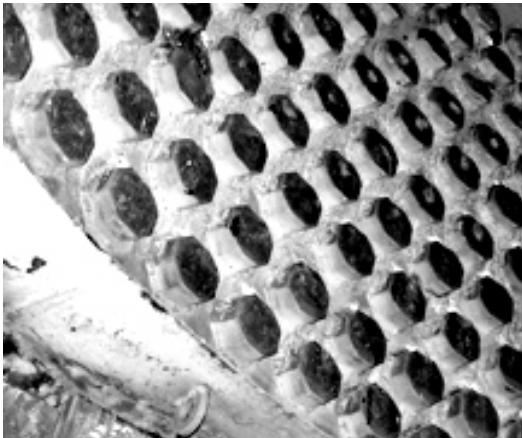
# BUTTONS



- Industry proven to combat Impact and Abrasion Wear
- Excellent results on mobile bucket & shovel protection, supports life of GET
- The unique profile of the Button deflects material
- Ideal for tooth adapter protection & bucket side wall protection
- Various sizes make them well suited for small & awkward areas requiring wear protection

DOMITE BUTTONS					
PART NO.	Length (A)	Domite® (C)	Backing (D)	Thickness (E)	Weight
	in. (mm)	in. (mm)	in. (mm)	in. (mm)	lbs. (kg)
D 50 BN	2" (50)	5/8" (15)	3/8" (10)	1" (25)	0.9 (.41)
D 75 BN	3" (75)	5/8" (15)	3/8" (10)	1" (25)	2.0 (.91)
D 90 BN	3 1/2" (90)	13/16" (20)	3/8" (10)	1 3/16" (30)	3.25 (1.47)
D 115 BN	4 1/2" (115)	7/8" (22)	3/8" (10)	1 1/4" (32)	5.6 (2.54)
D 150 BN	6" (150)	1" (25)	3/8" (10)	1 3/8" (35)	10 (5.0)

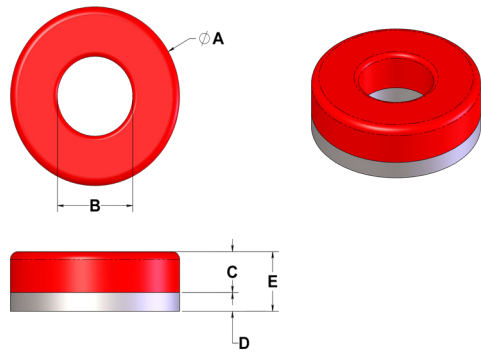
# OCTAGON'S



- Domite® Octo's provide excellent wear protection on fixed plant
- When arranged in an offset pattern they lock in material creating muck on muck wear
- Good for impact zones, spider arms, lower shell protection, chutes & rock boxing
- Light weight and easy to install
- Custom sizes - diameter's & thicknesses available

DOMITE OCTO'S						
PART NO.	Width Flat to Flat (A)	Diameter Tip to Tip (B)	Domite® (C)	Backing (D)	Thickness ( E )	Weight
	in. (mm)	in. (mm)	in. (mm)	in. (mm)	in. (mm)	lbs. (kg)
D 100 TO	3 3/4" (94)	4" (100)	1" (25)	1/2" (12.5)	1 1/2" (38)	5.2 (2.4)
D 101 TO	3 3/4" (94)	4" (100)	1 1/4" (32)	3/4" (19)	2" (51)	6.9 (3.2)

# BOLT PROTECTORS



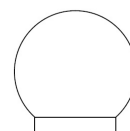
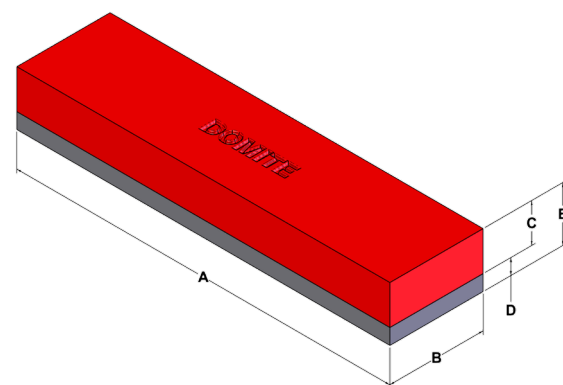
- Domite® Bolt protectors are ideal to protect nuts & bolts in high wear areas
- Ideal for fixed and mobile plant
- Traps material inside the ring saving nut & bolt from wear
- Light weight and easy to install
- Allows for perimeter or plug welding in place

DOMITE DONUTS						
PART NO.	Diameter O.D. (A)	I.D. (B)	Domite® (C)	Backing (D)	Thickness (E)	Weight
	in. (mm)	in. (mm)	in. (mm)	in. (mm)	in. (mm)	lbs. (kg)
D 75 DO	3" (75)	1" (25)	5/8" (15)	3/8" (10)	1" (25)	2.0 (.91)
D 901 DO	3 1/2" (90)	1 3/16" (30)	5/8" (15)	3/8" (10)	1" (25)	3.25 (1.47)
D 902 DO	3 1/2" (90)	1 7/8" (48)	5/8" (15)	3/8" (10)	1" (25)	2.25 (1)
D 100 DO	3 15/16" (100)	2" (50)	7/8" (22)	3/8" (10)	1 1/4" (32)	3 (1.4)
D 130 DO	5 1/8" (130)	3 1/8" (80)	7/8" (22)	3/8" (10)	1 1/4" (32)	5 (2.3)

# WEAR BARS & BLOCKS

## FOR FIXED AND MOBILE PLANT

- Domite® wear blocks & bars are the utility product people turn to when they need a product they can depend on
- Blocks are suitable for both fixed & mobile applications
- Common applications are lower skirting, chute & lip protection, build up points in impact zones. Protection for the inner & outer walls of buckets, not to mention on the bottom for back grading. Suitable applications are endless
- Any size can be modified to suit your application including profiles and peaks for added deflection benefits
- Arc studs or bolt holes can be easily added to suit any attachment requirement. Just ask us



ROUND BAR



BARS & BLOCKS

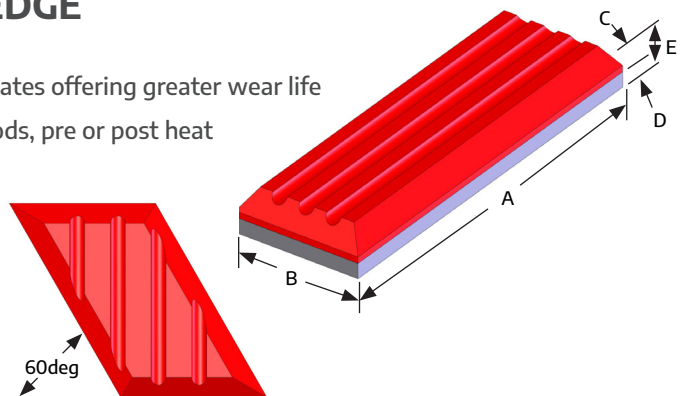
DOMITE WEAR BARS & BLOCKS						
PART NO.	Length (A)	Width (B)	Domite® (C)	Backing (D)	Thickness(E)	Weight
	in. (mm)	in. (mm)	in. (mm)	in. (mm)	in. (mm)	lbs. (kg)
ROUND BARS						
D 901 RB	9" (229)	1 1/2" (38)	1 3/16" (30)	5/16" (8)	1 1/2" (38)	4.5 (2)
D 901 RBx2	18" (457)	1 1/2" (38)	1 3/16" (30)	5/16" (8)	1 1/2" (38)	9 (4)
D 902 RB	9 3/4" (250)	1" (25)	1" (25)	1/4" (6)	1 1/4" (31)	3.3 (1.5)
D 903 RB	12" (305)	2" (51)	1 11/16" (42)	5/16" (8)	2" (51)	12.2 (5.5)
D 904 RB	12" (305)	3" (76)	2 5/8" (65.5)	3/8" (9.5)	3" (76)	26.4 (12)
BARS & BLOCKS						
D 301 WB	3" (75)	2" (50)	5/8" (15)	3/8" (10)	1" (25)	2.2 (1)
D 376 WB	4" (101)	4" (101)	3/8" (10)	1/8" (3)	1/2" (13)	2.2 (1)
D 302 WB	4 1/2" (115)	2" (50)	1 1/2" (38)	1/2" (12)	2" (50)	5 (2.3)
D 354 WB	5" (127)	2" (50)	1 1/2" (38)	1/2" (12)	2" (50)	5.6 (2.5)
D 356 WB	6" (152)	2" (50)	1 5/8" (40)	3/8" (10)	2" (50)	6.8 (3.1)
D 316 WB	6" (152)	3" (76)	1 1/8" (28)	3/8" (10)	1 1/2" (38)	7.7 (3.4)
D 322 WB	6" (152)	3" (76)	1 5/8" (40)	3/8" (10)	2" (50)	9.7 (4.4)
D 321 WB	6" (152)	3" (76)	2" (50)	3/8" (10)	2 3/8" (60)	11.7 (5.3)
D 350 WB	8" (203)	1" (25)	5/8" (15)	3/8" (10)	1" (25)	2.3 (1.04)
D 352 WB	8" (203)	2" (50)	5/8" (15)	3/8" (10)	1" (25)	4.5 (2)
D 375 WB	9" (230)	1" (25)	1 1/16" (17)	5/16" (8)	1" (25)	2.5 (1.2)
D 353 WB	10" (254)	2" (50)	15/32" (12)	5/16" (8)	25/32" (20)	4.4 (2)
D 330 WB	11 7/10" (297)	1 1/2" (38)	2 1/4" (57)	3/4" (19)	3" (76)	14.5 (6.6)
D 351 WB	11 13/16" (300)	1" (25)	5/8" (15)	3/8" (10)	1" (25)	3.4 (1.5)
D 362 WB	12" (305)	2" (50)	1 5/8" (40)	3/8" (10)	2" (50)	13.3 (6)
D378 WB	12" (305)	2" (50)	1/2" (12)	5/16" (8)	13/16" (20)	5.6 (2.5)
D 367 WB	12" (305)	3" (76)	3/4" (19)	1/4" (6)	1" (25)	10.0 (4.5)
D 364 WB	17" (432)	2" (50)	1 5/8" (40)	3/8" (10)	2" (50)	19.2 (8.7)
D 366 WB	23 5/8" (600)	2" (50)	1 5/8" (40)	3/8" (10)	2" (50)	26.2 (11.9)
D 369 WBx2	24" (610)	3" (76)	1" (25)	1/2" (13)	1 1/2" (38)	30.5 (13.8)
D 370 WB	31 1/2" (800)	3" (76)	1 1/4" (32)	1/2" (13)	1 3/4" (44)	47 (21.3)



# SKID BARS

## RECTANGULAR, HERRINGBONE & DOMED EDGE

- Domite® 725BHN Skid Bars are far superior to standard Q&T wear plates offering greater wear life
- Mild Steel backing plate allows for easy welding in place, no special rods, pre or post heat
- They feature Tapered & Rounded edges to deflect Impact & Material
- Geometric & Engineered design to increase wear life
- Wear channels which pack with Ore creating Ore on Ore wear
- Various Shapes & Sizes allow for custom configurations to best resist wear in Buckets, Haul Trucks & Fixed plant Applications

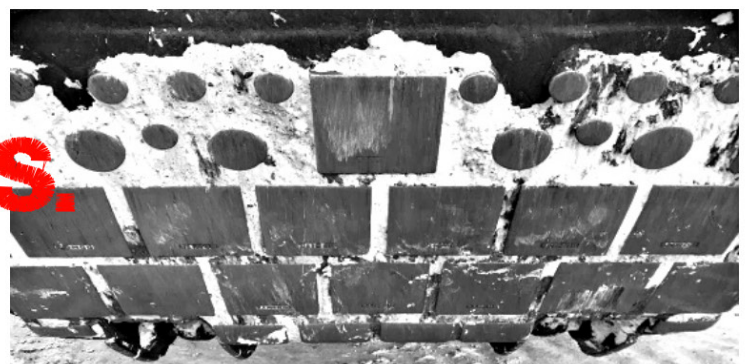


Herringbone

Rectangle



**VS.**



**AR 500**

**DOMITE**

## 5000 HOUR PERFORMANCE COMPARISON

993 WL - AR 500 WORE OUT WITHIN 5000 HOURS, SAME BUCKET WITH DOMITE BUCKET ARMOUR REMAINS INTACT, IN SERVICE WITH LOGO STILL VISIBLE @ 5000 HOURS.

PART NO.	WIDTH		LENGTH		THICKNESS						REFERENCE PART #	COMMENTS
					Overall		Domite		Steel Backing			
	mm	in	mm	in	mm	in	mm	in	mm	in		

### SKID BAR

D403SB	216	8 1/2	102	4	35	13/8	22	7/8	13	1/2	AI - 250 / WP062 / SB403	
D404SB	216	8 1/2	102	4	35	13/8	22	7/8	13	1/2	D404L SB / AI - 254 / SB404L	Herringbone
D405SB	216	8 1/2	102	4	35	13/8	22	7/8	13	1/2	D405R SB / AI - 255 / SB404R	Herringbone
D406SB	305	12	102	4	35	13/8	22	7/8	13	1/2	AI - 251 / WP063 / SB406	
D407SB	305	12	102	4	35	13/8	22	7/8	13	1/2	D407L SB / AI - 256 / SB407L	Herringbone
D408SB	305	12	102	4	35	13/8	22	7/8	13	1/2	D408R SB / AI - 257 / SB408R	Herringbone
D409SB	152	6	102	4	35	13/8	22	7/8	13	1/2	AI - 252 / WP061 / SB409	
D410SB	152	6	102	4	35	13/8	22	7/8	13	1/2	D410L SB / AI - 258 / SB410L	Herringbone
D411SB	152	6	102	4	35	13/8	22	7/8	13	1/2	D411R SB / AI - 259 / SB411R	Herringbone
D412SB	76	3	279	11	35	13/8	22	7/8	13	1/2	D205SB / AI - 253 / SB205	

# WEAR PLATES

Easy to use and install, Domite® Wear Plates & Sheets provide superior resistance to abrasion & impact.

Suited for a wide range of Fixed & Mobile applications: Chute's, Hoppers, Apron Feeders, Fan Blades, Transfer points, Conveyor Skirting, Buckets & Haul Truck dove tails etc

Domite® Wear Technology have a range of standard plates but also specialize in custom solutions, speak to us about how we can help you reduce your wear today.

Attachment methods include;

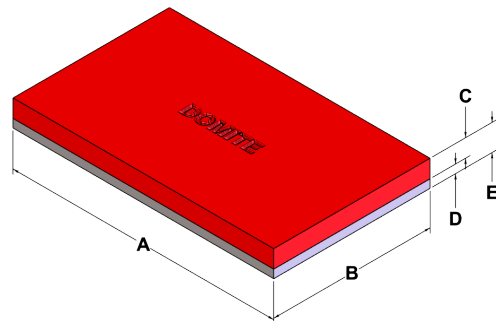
- Welding into place, no pre or post heating required, plug or perimeter weld
- Arc Studs can easily be attached to the back of the liners to specified requirements
- Custom counter bore or counter sunk bolt holes can be added

Realizing each application has different wear characteristics Domite have come up with a range of Custom liner designs to combat channeling & premature wear which can result in early plate replacement. Speak to us about our:

- Domite capped bolts
- Taper line offset liner layouts

DOMITE WEAR PLATES						
PART NO.	Length (A)	Width (B)	Domite® (C)	Backing (D)	Thickness(E)	Weight
	in. (mm)	in. (mm)	in. (mm)	in. (mm)	in. (mm)	lbs. (kg)
D 103 WP	9" (229)	6" (152)	5/16" (8)	3/16" (5)	1/2" (13)	7.6 (3.5)
D 104 WP	9" (229)	6" (152)	3/4" (19)	1/4" (6)	1" (25)	15.3 (7)
D 111 WP	9" (229)	9" (229)	5/16" (8)	3/16" (5)	1/2" (13)	11.5 (5.2)
D 105 WP	10" (254)	6" (152)	11/16" (17)	5/16" (8)	1" (25)	17 (7.7)
D 106 WP	10" (254)	6" (152)	1 3/8" (35)	3/8" (10)	1 3/4" (45)	29 (13.2)
D 112 WP	10" (254)	10" (254)	11/16" (17)	5/16" (8)	1" (25)	28.5 (12.9)
D 114 WP	10" (254)	10" (254)	1 1/4" (32)	1/2" (13)	1 3/4" (45)	49.5 (22.5)
D 185 WP**	11 1/2" (282)	8 1/2" (216)	1" (25)	1/4" (6)	1 1/4" (31)	35 (15.9)
D 107 WP	12" (305)	6" (152)	11/16" (17)	5/16" (8)	1" (25)	20.0 (9)
D 119 WP	12" (305)	10" (254)	1 5/8" (41)	3/8" (9)	2" (51)	68 (31)
D 193 WP	12" (305)	12" (305)	3/8" (10)	1/8" (3)	1/2" (13)	20 (9)
D 121 WP	12" (305)	12" (305)	3/4" (19)	1/4" (6)	1" (25)	41 (18.6)
D 127 WP	17 1/2" (445)	17 1/2" (445)	3/4" (19)	1/4" (6)	1" (25)	86 (39)
D 120 WP	16" (400)	10 1/2" (268)	3/4" (19)	1/4" (6)	1" (25)	46 (20.8)
D 126 WP	18" (457)	12" (305)	3/4" (19)	1/4" (6)	1" (25)	63.5 (28.8)
D 185 WP x2**	23 1/2" (597)	8 1/2" (216)	1" (25)	1/4" (6)	1 1/4" (31)	66.8 (30.3)
D 122 WP x4	24" (610)	24" (610)	1" (25)	1/4" (6)	1 1/4" (31)	204 (92.5)

\*\* Indicates Plates are available with or without plug weld holes

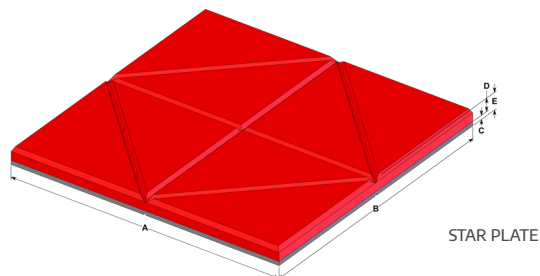




# STAR PLATES

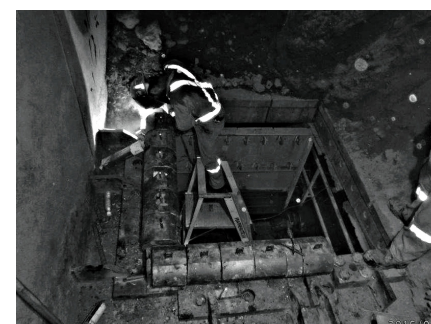
Domite® Star plates are a versatile plate, their cast notches allow you to use them in an unlimited number of applications. Use as a whole or break them (under pressure) into the desired shape for your application

- Allows you to keep less plate inventory
- Cost effective vs CCO & AR plate, gain extended wear life
- Commonly used on TBM's



# LOAF LINERS

- Long Life Domite® 650+ BHN Loaf Liners are far superior to standard cast & alloyed steel parts
- Used to Rock Box / Dead Bed material in Surge Bins, above Apron Feeders, Lips, Conveyor load out V's & Transfer points
- Protects the edge / lip from abrasive wear & impact
- Allows material to build up creating Ore on Ore wear, material naturally rolls over the top
- Standard loafs handle 48" pit ore / underground they are facing 12" x 12" x 36" ore dropping 25 ft +
- Easily installed, no welding required
- Embedded alloy steel insert allows for secure handling
- Gain maximum life, once one side is worn, spin the loaf
- Multiple sizes to choose from, suitable for primary (coarse ore), secondary and tertiary applications
  - Used on lips & in and around conveyor loading points
  - Transfer chutes



PART NO.	Width (A)	Length (B)	Height (C)	Slot Width (D)	Slot Height (E)
	in. (mm)	in. (mm)	in. (mm)	in. (mm)	in. (mm)

## STANDARD LOAFS

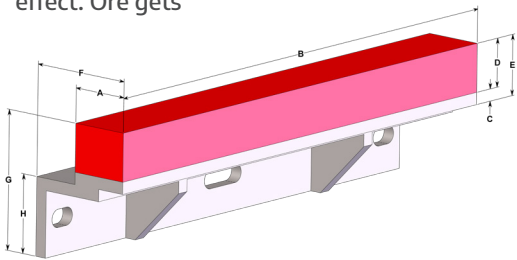
D 44 L	8" (203)	4" (102)	10" (254)	1 1/8" (29)	4" (102)
D 88 L	8" (203)	8" (203)	10" (254)	1 1/8" (29)	4" (102)
D 717 L	10" (254)	4" (100)	8" (203)	1 1/8" (29)	4" (102)

## NEW - MINI LOAFS

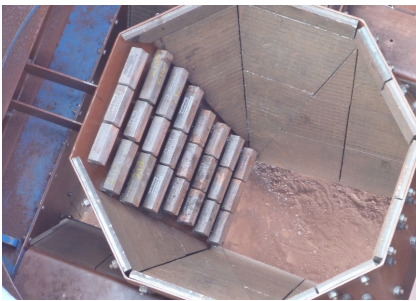
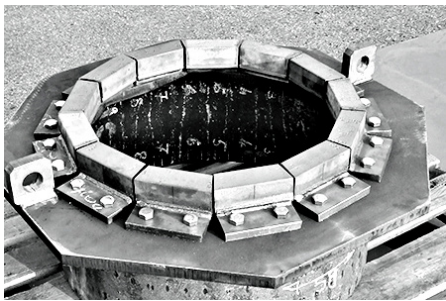
D 100 L	4" (102)	4" (102)	4" (102)	7/8" (23)	2 1/8" (54)
D 150 L	4" (102)	6" (152)	4" (102)	7/8" (23)	2 1/8" (54)
D 709 L	6" (152)	4" (102)	6" (152)	7/8" (23)	2 1/8" (54)

# MICRO LEDGE

- Control material flow & effective conveyor loading. Designed for use in chutes, bins and transfer points which handle up to 6" minus crusher ore
- When installed in multiple rows on the sub-straight they create a "dead-bed/rock box" effect. Ore gets trapped in the ledge & you then get an ore on ore wear, virtually eliminating wear from the sub-straight
- Extend maintenance intervals of bins, chutes, transfer points.
- Light & simple installation/change out in confined spaces
- DEM simulation for optimized material flow available
- Bonded & Cast options available or custom designed to suit specific needs



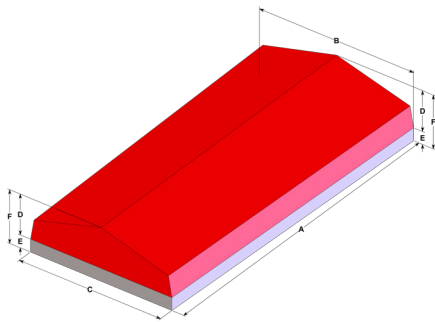
DOMITE MICRO LEDGE									
PART NO.	Width (A)	Length (B)	Backing (C)	Domite (D)	Thickness (E)	F	G	H	Weight
	in (mm)	in (mm)	in (mm)	in (mm)	in (mm)	in (mm)	in (mm)	in (mm)	lb (kg)
D 10 ML	2" (50)	5" (128)	5/16" (8)	15/8" (42)	2" (50)	3 1/2" (90)	4 1/2" (115)	2 1/2" (65)	8 (3.6)
D 11 ML	2" (50)	7 1/2" (190)	5/16" (8)	15/8" (42)	2" (50)	3 1/2" (90)	4 1/2" (115)	2 1/2" (65)	12 (5.5)
D 12 ML	2" (50)	8 1/4" (210)	5/16" (8)	15/8" (42)	2" (50)	3 1/2" (90)	4 1/2" (115)	2 1/2" (65)	13.2 (6.0)
D 13 ML	2" (50)	9" (230)	5/16" (8)	15/8" (42)	2" (50)	3 1/2" (90)	4 1/2" (115)	2 1/2" (65)	14.5 (6.6)
D 14 ML	2" (50)	17" (432)	5/16" (8)	15/8" (42)	2" (50)	3 1/2" (90)	4 1/2" (115)	2 1/2" (65)	27.5 (12.5)





# GRIZZLY BARS/CAPS

- Superior wear resistance results in higher consistency of ore size feeding your crushing circuit
- Lasts on average 4-5 times longer than AR equivalents
- Domite® Grizzly Caps improve performance in downstream, secondary and tertiary crushing
- The peaked profile improves efficiency, ensuring all material passes over the screen slits
- Custom sizes & profiles (round/flat) available



## DOMITE GRIZZLY BARS

PART NO.	Length (A)	Width (B)	Width (C)	Domite® (D)	Backing (E)	Thickness(F)	Weight
	in. (mm)	mm	mm	in. (mm)	in. (mm)	in. (mm)	lbs. (kg)

### TYPE A - 150 / 50 - TAPER

D 201 GB	12" (305)	150	137.5	1 1/2" (38)	1/2" (12)	2" (50)	30 (13.6)
D 202 GB	12" (305)	137.5	125	1 1/2" (38)	1/2" (12)	2" (50)	27.6 (12.5)
D 203 GB	12" (305)	125	112.5	1 1/2" (38)	1/2" (12)	2" (50)	24.7 (11.2)
D 204 GB	12" (305)	112.5	100	1 1/2" (38)	1/2" (12)	2" (50)	22.1 (10)
D 205 GB	12" (305)	100	87.5	1 1/2" (38)	1/2" (12)	2" (50)	19.4 (8.8)
D 206 GB	12" (305)	87.5	75	1 1/2" (38)	1/2" (12)	2" (50)	16.5 (7.5)
D 207 GB	12" (305)	75	62.5	1 1/2" (38)	1/2" (12)	2" (50)	13.9 (6.3)
D 208 GB	12" (305)	62.5	50	1 1/2" (38)	1/2" (12)	2" (50)	11.2 (5.1)

### TYPE B - 150 / 75 - TAPER

D 301 GB	12" (305)	150	141	1 1/2" (38)	1/2" (12)	2" (50)	30.4 (13.8)
D 302 GB	12" (305)	141	131	1 1/2" (38)	1/2" (12)	2" (50)	28.4 (12.9)
D 303 GB	12" (305)	131	122	1 1/2" (38)	1/2" (12)	2" (50)	26.2 (11.9)
D 304 GB	12" (305)	122	113	1 1/2" (38)	1/2" (12)	2" (50)	24.5 (11.1)
D 305 GB	12" (305)	113	103	1 1/2" (38)	1/2" (12)	2" (50)	22.3 (10.1)
D 306 GB	12" (305)	103	94	1 1/2" (38)	1/2" (12)	2" (50)	20.3 (9.2)
D 307 GB	12" (305)	94	84	1 1/2" (38)	1/2" (12)	2" (50)	18.3 (8.3)
D 308 GB	12" (305)	84	75	1 1/2" (38)	1/2" (12)	2" (50)	16.3 (7.4)

### TYPE C - 76 / 38 - TAPER

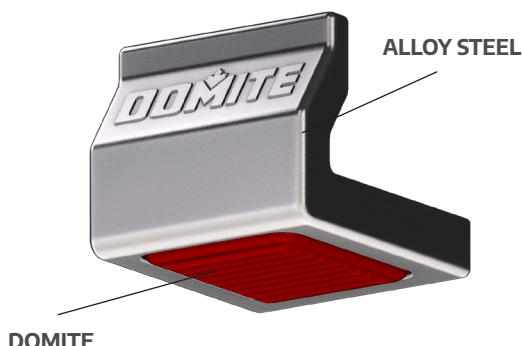
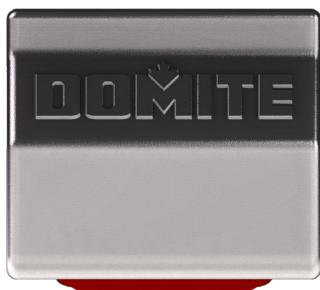
D 401 GB	15 1/2" (445)	76	66.5	1 1/2" (38)	1/2" (12)	2" (50)	14.6 (6.6)
D 402 GB	10" (254)	67	57	1 1/2" (38)	1/2" (12)	2" (50)	12.3 (5.6)
D 403 GB	11 1/2" (282)	57	47.5	1 1/2" (38)	1/2" (12)	2" (50)	10.4 (4.7)
D 404 GB	12" (305)	48	38	1 1/2" (38)	1/2" (12)	2" (50)	8.4 (3.8)

# HEEL SHROUDS

## HEAVY DUTY - BUCKET COMPONENTS

**LONG LIFE DOMITE®** - NOW TAKING THE SAME PROVEN BUCKET TECHNOLOGY USED FOR THE LAST 40 YEARS AND INCORPORATING IT TO COMPONENTS. DOMITE® PROVIDES EXCEPTIONALLY LONGER WEAR LIFE THAN EQUIVALENT STEEL PARTS

STRAIGHT



**D10HS**  
**STRAIGHT & CURVED**  
10" Wide / 8.5" High /  
10.5" Long  
Curve R45"

CURVED



**D7HS**  
**STRAIGHT & CURVED**  
7" Wide / 6" High /  
8" Long /  
Curve R22"

Domite Bucket Armour provides exceptionally longer life for extreme applications. Conventionally used AR & QT steel parts (300-400 BHN) are designed for impact resistance and toughness while compromising Abrasion Resistance.

- Domite® components consist of a cast, hardened steel alloy (425BHN) to provide the same impact resistance and toughness as conventional parts, only incorporating strategically placed Domite® Chrome-White-Iron (725 BHN) in high wear areas to provide maximum resistance in a completely new and unique method.



DOMITE WEAR TECHNOLOGY INC. | 20 LEE AVENUE, PARIS, ON N3L 3T6 CANADA  
PHONE 519.442.3129 | FAX 519.442.2604 | [info@domite.com](mailto:info@domite.com)