



High Performance Building Solutions

Tensioned Membrane Structures Available Immediately From Inventory

MINING

www.sprung.com/mining

Customers worldwide have discovered the Sprung Advantage

Sprung
Instant
Structures
info@sprung.com

MINE: 2.1 +



High Performance Building Solutions

Tensioned Membrane Structures Available Immediately From Inventory

EPSA Caserones Project - 4,200 meters (13,779.5 feet) above sea level in the Chilean Andes.

Proven quality and durability at remote sites around the globe have made Sprung Structures the world's leading tensioned membrane structure manufacturer for the mining industry





High Performance Building Solutions

Tensioned Membrane Structures Available Immediately From Inventory

ABOUT THE SPRUNG COMPANY

- In business since 1887 directed by four generations of the Sprung family.
- Inventor of the tensioned membrane structure.
- Innovative structure system is continuously evolving through ongoing research and development programs.
- Over 2,000,000 square feet of inventory available for immediate delivery.
- State of the art ISO manufacturing facilities.
- Proven technology with over 12,000 structures erected in 90 countries worldwide.
- Unmatched worldwide reputation in the mining industry.



Philip Dorland
Sprung

Founded the
Sprung Group
of Companies
in 1887



Donald Allen
Sprung



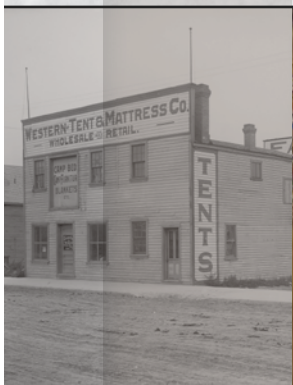
Philip Davis
Sprung



Philip Donald
Sprung



Timothy Ernest
Sprung





High Performance Building Solutions

Tensioned Membrane Structures Available Immediately From Inventory

Aluminum Substructure



Our Aluminum Substructure Outperforms Steel

While conventional construction is still relying on steel as its substructure material, your Sprung structure offers greater versatility and performance with an extruded aluminum substructure that arrives on site prefabricated and ready to assemble.

Aluminum is...

- **Rustproof**
Unlike steel and wood, aluminum performs extremely well in humid environmental conditions.
- **Lightweight**
Aluminum is about 1/3 the weight of steel.
- **Strong**
Aluminum meets or exceeds building codes.
- **Versatile**
The substructure can be extruded into virtually any shape. Connections are butted, not welded.
- **Easy-to-Ship**
The ratio of strength-to-weight equals more value for less weight.
- **Long-lasting**
With an indefinite life expectancy, aluminum actually gets stronger with age.
- **Environmentally Friendly**
Aluminum is 100% recyclable, with no loss of quality.



High Performance Building Solutions

Tensioned Membrane Structures Available Immediately From Inventory

Premium Insulation



Premium Insulation Offers Ideal Heating and Cooling Efficiency

Constant research, testing and development have led to a Sprung structure that provides naturally better climate control.

Unlike a metal building that compresses insulation at many locations within the finished product and lowers the R-value (the measure of thermal resistance), a Sprung structure keeps the insulation much closer to its maximum thickness for maximum performance and comfort. It also reduces your climate-control costs and absorbs sound for better acoustics.

The structure is ideally suited to almost any climate imaginable, from -50°C to +50°C.

When you build a Sprung structure with insulation, you also get our high-strength, rip-stop interior membrane. This membrane is more durable than drywall and offers exceptional fire-retardant capability.

Five reasons insulation performs better in a Sprung building

1. Our highly tensioned exterior architectural membrane provides a significantly better airtight building envelope.
2. There is no differentiation between wall and roof of a Sprung structure, which provides a more consistent R-value rating throughout the entire building envelope.
3. Up to 9-inch-thick (R-30) layer of Johns Manville formaldehyde-free fiberglass blanket insulation means better performing insulation.
4. A double vapor barrier system helps reduce mold and mildew.
5. A reflective foil backing doubles both as a vapor barrier and to retain and reflect radiant heat, adding to the overall energy efficiency.

Why We Use the Johns Manville Formaldehyde-Free Fiberglass Blanket

- It is the only formaldehyde-free fiberglass product of its kind in the world.
- The aluminum foil backing increases overall efficiency, retaining or reflecting radiant energy.
- The blanket is eight or nine inches thick, exceeding building code requirements.
- The R-25 or R-30 rating of the fiberglass blanket contributes to an extremely energy-efficient system.
- The fiberglass is certified by Scientific Certification Systems (SCS) to have a minimum recycled content of 25%, comprised of 20% post-consumer bottle glass and 5% post-industrial glass.



High Performance Building Solutions

Tensioned Membrane Structures Available Immediately From Inventory

Performance Architectural Membrane

Polyurethane Architectural Membrane

- Blackout design prevents solar gain and manages climate control
- Weighs approximately 18 oz. per square yard
- High strength, rip-stop
- Exceptional fire-retardant capability
- 12-year pro-rata guarantee
- Opaque for maximum longevity and energy efficiency
- Available in white, grey or tan
- Rain Kleen® finish prolongs life of the fabric and is easy to clean

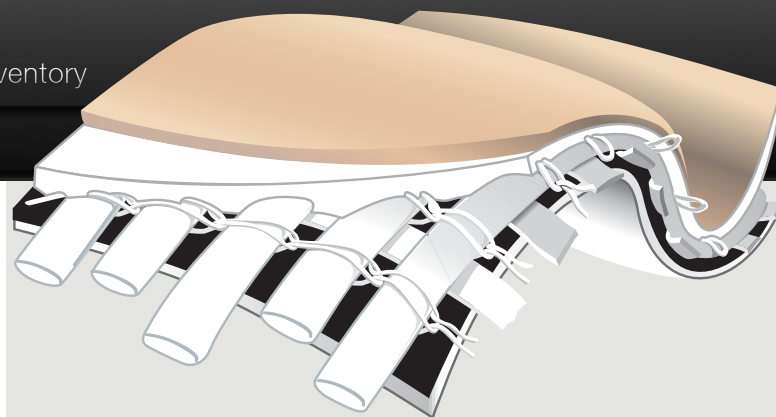
LTA

Low Temperature Arctic Membrane

Designed for extreme cold weather installations

(below -5°C, or 23°F)

- Blackout design prevents solar gain and manages climate control
- Weighs approximately 25 oz. per square yard
- Specialized low-temperature cold crack characteristics to -60°F
- High strength, rip-stop
- Exceptional fire-retardant capability
- Available in white or tan
- 15-year pro-rata guarantee



Kynar® and Tedlar®

Designed for permanent or long-term applications

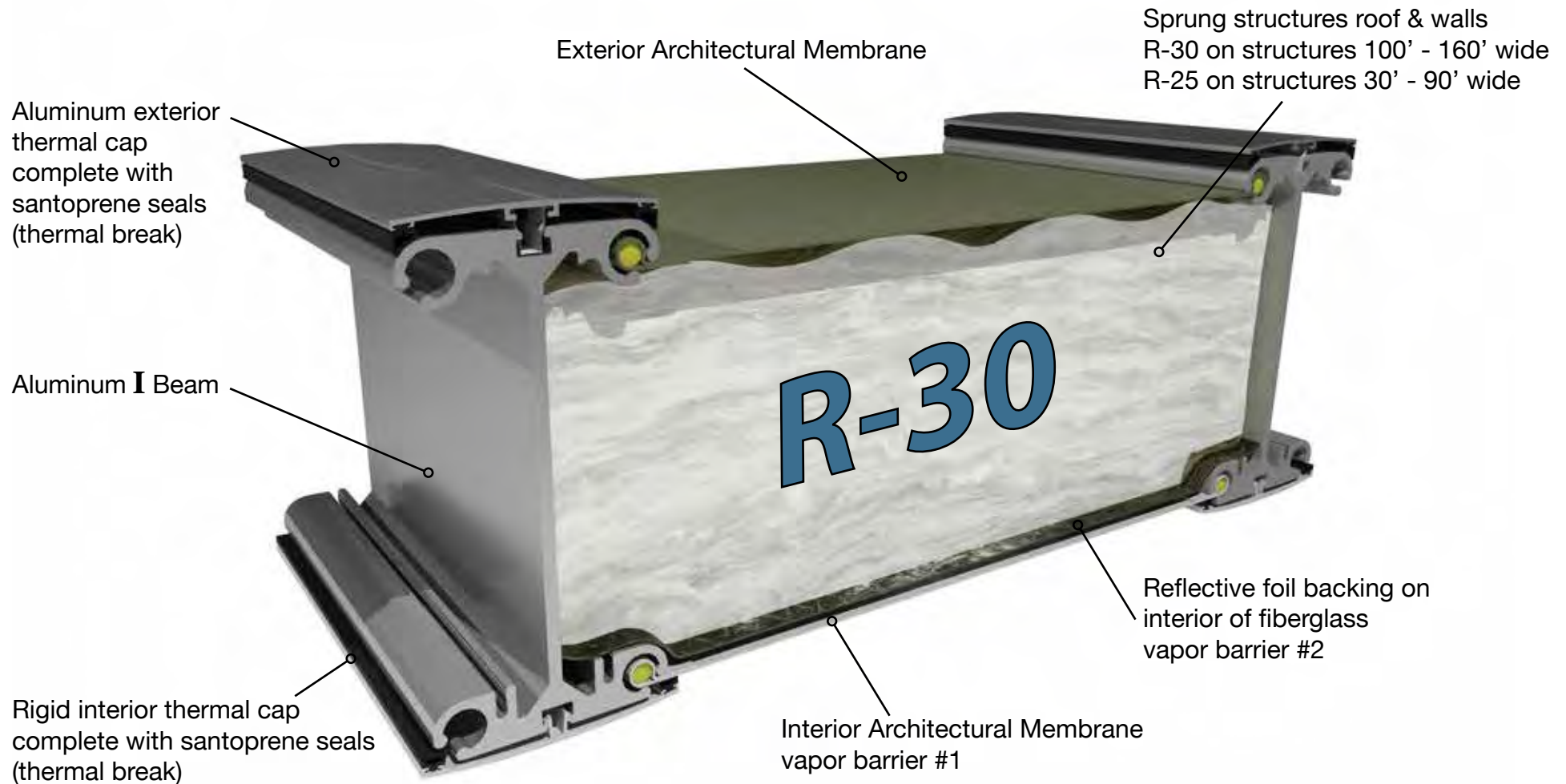
- Simply the longest-lasting fabric of its type in the world
- Blackout design prevents solar gain and manages climate control
- Weighs approximately 24 oz. per square yard
- Guards against UV and airborne contaminants
- Dramatically extends membrane life
- High strength, rip-stop design
- Exceptional fire-retardant capability
- Available in large selection of colors (custom colors available)
- 20-year pro-rata guarantee



High Performance Building Solutions

Tensioned Membrane Structures Available Immediately From Inventory

HIGH PERFORMANCE INSULATION SYSTEM



Johns Manville Formaldehyde Free Insulation





High Performance Building Solutions
Tensioned Membrane Structures Available Immediately From Inventory

PARTIAL CUSTOMER LIST



The Gold Company





High Performance Building Solutions

Tensioned Membrane Structures Available Immediately From Inventory

Finning - Canada

Vehicle Maintenance



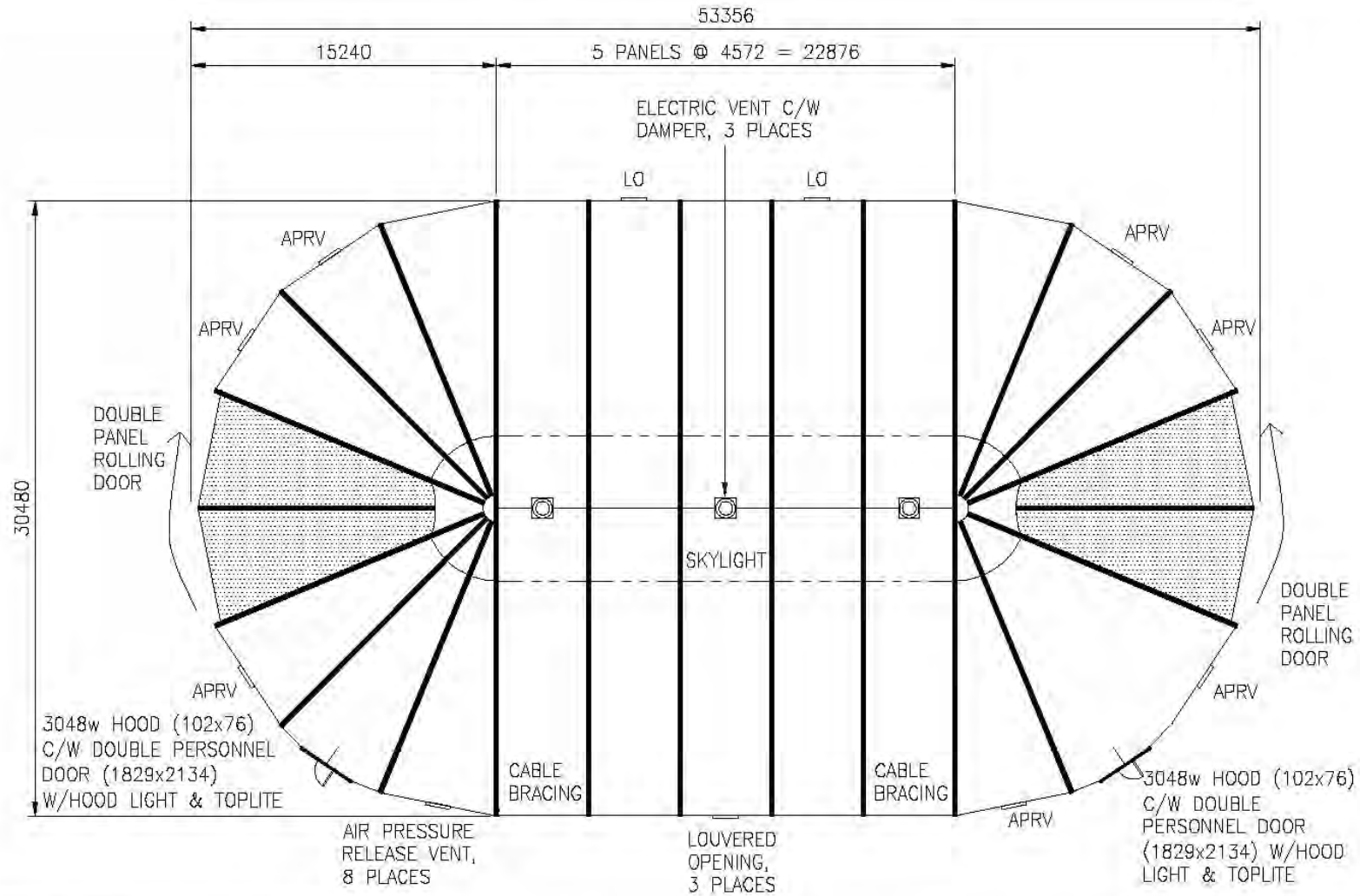


High Performance Building Solutions

Tensioned Membrane Structures Available Immediately From Inventory

EPSA Caserones Project - Chile





DRAWING APPROVAL	Signature
	Print Name
	Date:
	Confirmation of wind speed at site per the local building dept.
	Building Code: _____ m/s, Exposure _____ Initial _____


PLAN VIEW
 1:300

SIGNATURE SERIES



EPSA	
30.5m x 53.4m MAINTENANCE SHOP	
DATE 05/27/2010	SCALE AS NOTED
DRAWING # F10591A	



High Performance Building Solutions

Tensioned Membrane Structures Available Immediately From Inventory

EPSA Caserones Project - Chile





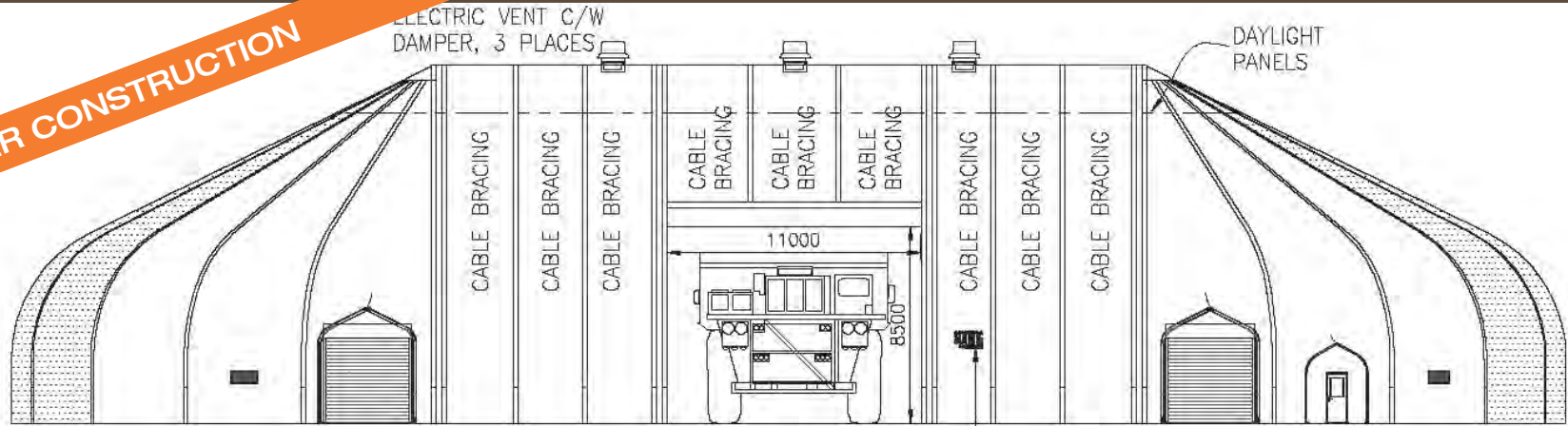
High Performance Building Solutions

Tensioned Membrane Structures Available Immediately From Inventory

FMG, Solomon Mines Leighton - Western Australia



UNDER CONSTRUCTION

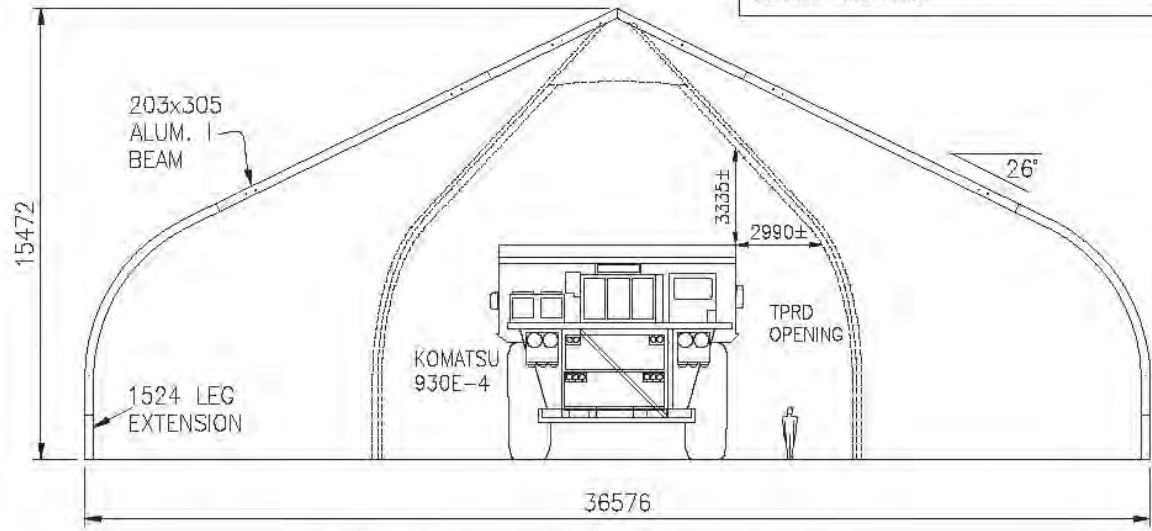


GOAL POST HEADER SYSTEM BY SPRUNG TO ALLOW FOR CLEAR OPENING BELOW (DOOR BY OTHERS)

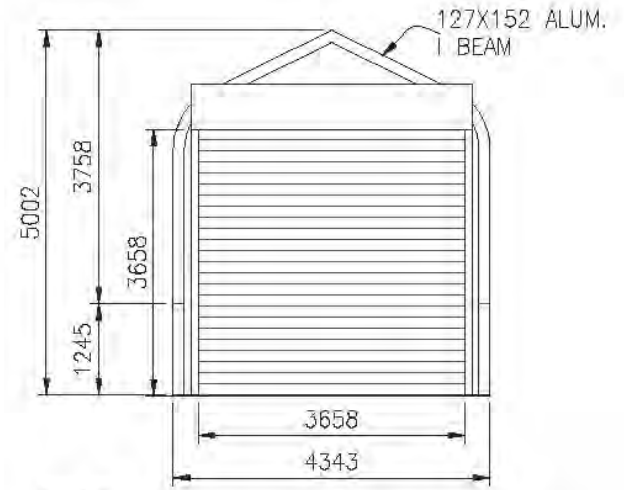
SPRUNG LOGO, 2 PER STRUCTURE

ELEVATION
1:300

COLORS ON THESE ELEVATIONS MAY VARY SIGNIFICANTLY DEPENDING ON PRINTER OR MONITOR, PLEASE REFER TO MEMBRANE SAMPLES FOR ACTUAL COLORS.



SECTION 36.6m STRUCTURE
1:250



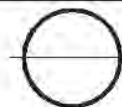
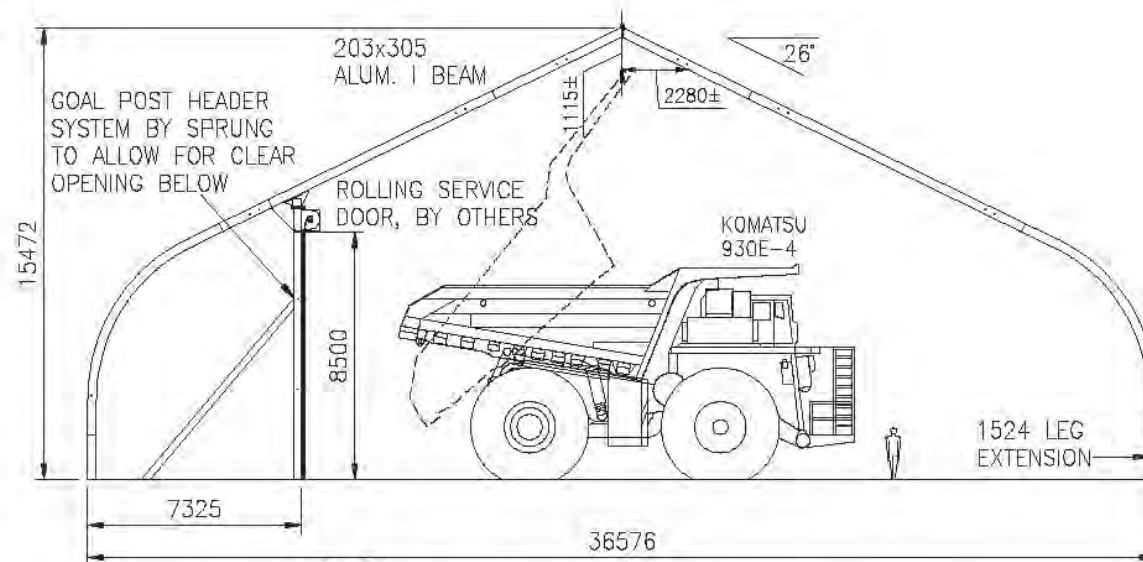
4.3m HOOD C/W 1245 LEG
1:100



SIGNATURE SERIES

CIA, MINERA NEVADA SpA 36.6m x 67.6m TRUCK SHOP	
DATE 02/29/12	SCALE AS NOTED
DRAWING #	F12-237B

UNDER CONSTRUCTION



SECTION 36.6m STRUCTURE
1:250

DRAWING APPROVAL

Signature _____

Print Name _____

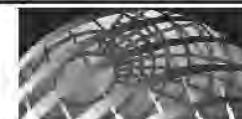
Date: _____

Confirmation of wind speed at site per the local building dept.

Building Code: _____

_____ m/s, Exposure _____

Initial _____



sprung

SIGNATURE SERIES

CIA. MINERA
NEVADA SpA.
36.6m x 67.6m
TRUCK SHOP

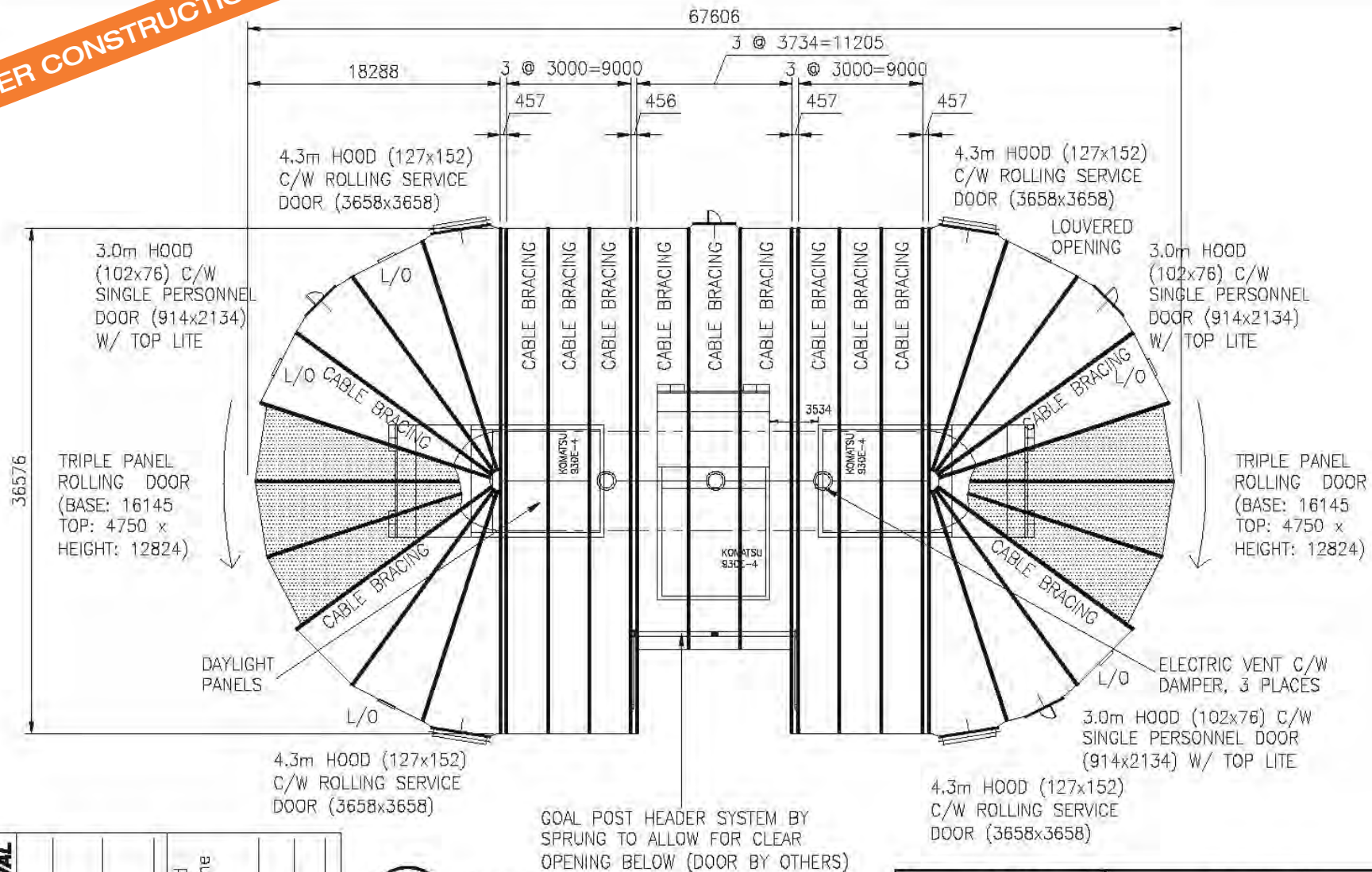
DATE
02/29/12

SCALE
AS NOTED

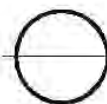
DRAWING #

F12-237C

UNDER CONSTRUCTION



DRAWING APPROVAL	Signature	
	Print Name	
	Date:	
	Confirmation of wind speed at site per the local building dept.	
	Building Code:	
	m/s, Exposure	
	Initial	



PLAN VIEW
1:400

EQUIPMENT SHOWN FOR
REFERENCE ONLY, NOT
A FACTORY DRAWING.

SIGNATURE SERIES



CIA MINERA
NEVADA SpA
36.6m x 67.6m
TRUCK SHOP

DATE
02/29/12

SCALE
AS NOTED

DRAWING #
F12-237A



High Performance Building Solutions

Tensioned Membrane Structures Available Immediately From Inventory

Joy Global (P&H MinePro Services)





High Performance Building Solutions

Tensioned Membrane Structures Available Immediately From Inventory

Joy Global (P&H MinePro Services) - Virginia, MN





High Performance Building Solutions

Tensioned Membrane Structures Available Immediately From Inventory

Transwest Mining Systems





High Performance Building Solutions

Tensioned Membrane Structures Available Immediately From Inventory

Resolution Copper Mining

Winch Housing





High Performance Building Solutions
Tensioned Membrane Structures Available Immediately From Inventory

San Gold, Rio Tinto

Processing





High Performance Building Solutions

Tensioned Membrane Structures Available Immediately From Inventory

San Gold

Conveyor Enclosures





High Performance Building Solutions
Tensioned Membrane Structures Available Immediately From Inventory

Yukon Zinc, Atcon

Warehousing





High Performance Building Solutions

Tensioned Membrane Structures Available Immediately From Inventory

Encana, Ekati, Rio Tinto





High Performance Building Solutions

Tensioned Membrane Structures Available Immediately From Inventory

Liberty Mine





High Performance Building Solutions
Tensioned Membrane Structures Available Immediately From Inventory

Bulk Storage



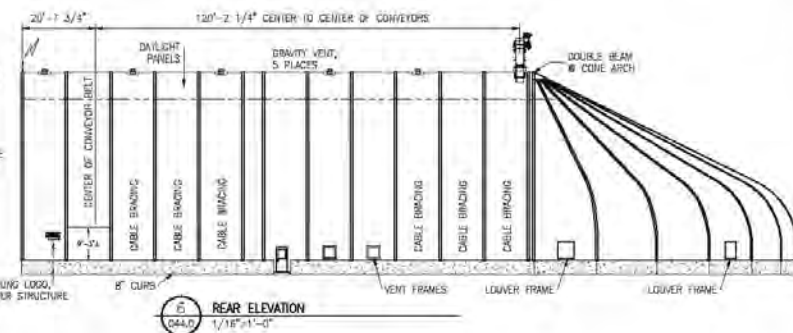
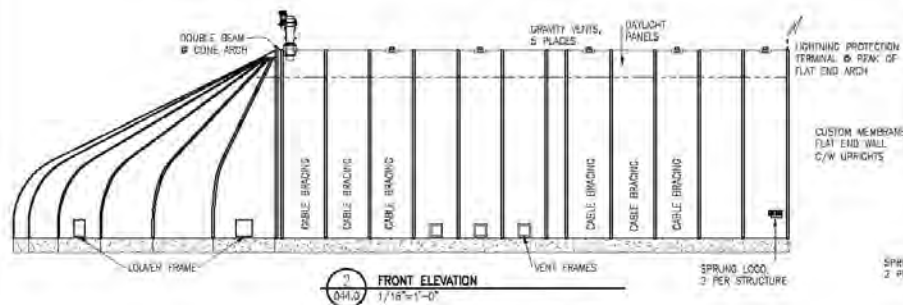
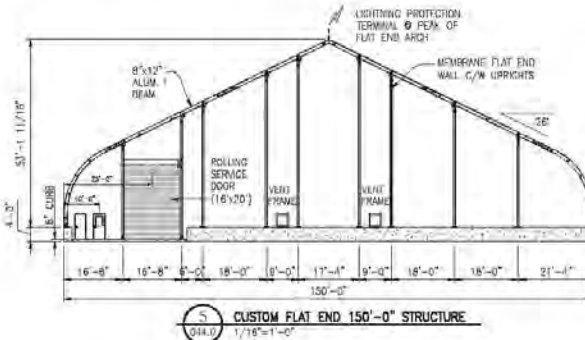
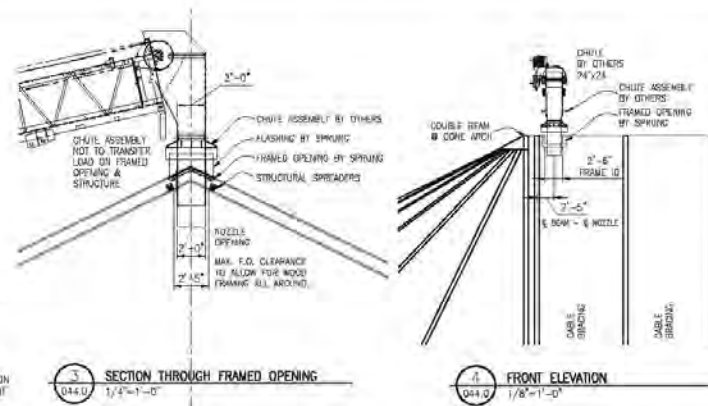
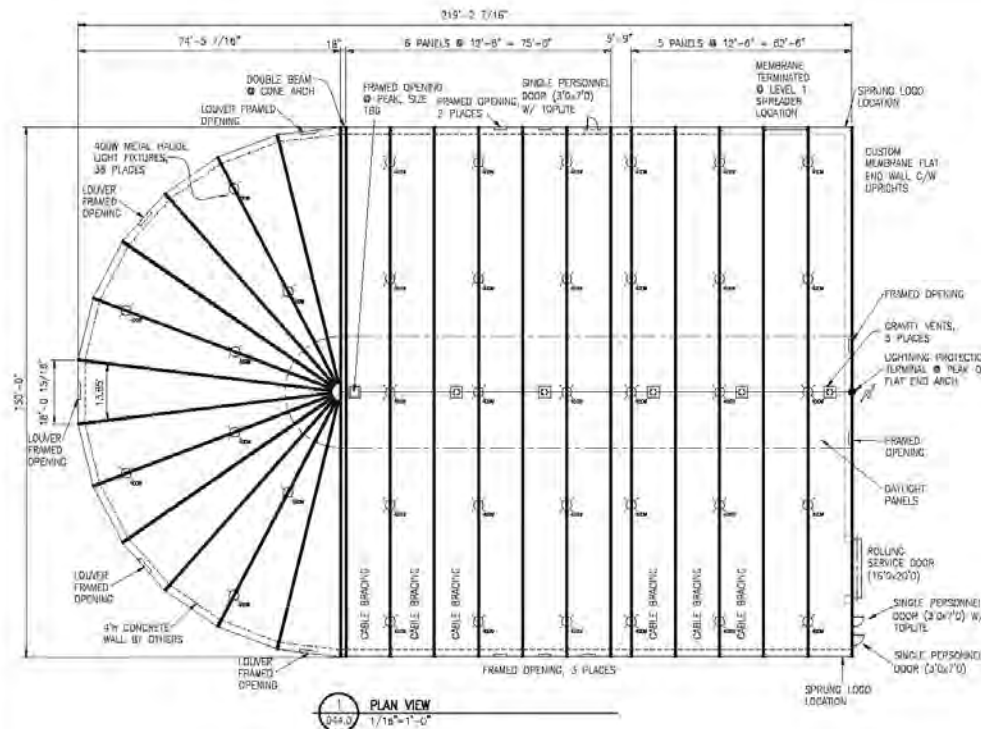


High Performance Building Solutions

Tensioned Membrane Structures Available Immediately From Inventory

Kennecott Utah Copper MAP Project - Molybdenum Storage





TOLL FREE 1-800-804-9999
OFF 405 245-0871 www.sprung.com

GENERAL NOTES:

1. ALL PERSONNEL DOORS C/W FRAME WORKING.
2. OTHER MEMBRANE TO BE FINISHED TO CONCRETE USING ALUM FLAT END.
3. STRUCTURE MEMBRANE WITHIN AFTER 120' CONCRETE CURB THE MEMBRANE WITHIN 120' FROM CURB. THE MEMBRANE WITHIN 120' FROM CURB SHALL BE FINISHED TO CONCRETE USING ALUM FLAT END.
4. THIS STRUCTURE IS DESIGNED TO SHOW SHOW THE MEMBRANE OF THE STRUCTURE SHOULD BE ASY CLEAR.
5. WITH REGARDING A HEAVY VENTILATION FOR AIR CIRCULATION WITHIN THE STRUCTURE IT IS IMPORTANT TO INSURE THAT THE SYSTEM REMAINS WORK. AIR FLOW IS HEAVY EXHAUSTED BY THE CURB WALL. THIS PROCESS WILL RESULT IN A POSITIVE PRESSURE BEING MAINTAINED WITHIN THE STRUCTURE. IT WILL BE CRITICAL TO OPEN DOORS AND MOISTURE WILL BE DRAWN INTO THE STRUCTURE.
6. ALL EXTERIOR WALLS & PARTITIONS (IF APPLICABLE) TO BE FINISHED TO CONCRETE USING ALUM FLAT END.

SIGNATURE SERIES

11/11/16/17/20/21/22/23/24/25/26/27/28/29/30/31/32/33/34/35/36/37/38/39/40/41/42/43/44/45/46/47/48/49/50/51/52/53/54/55/56/57/58/59/60/61/62/63/64/65/66/67/68/69/70/71/72/73/74/75/76/77/78/79/80/81/82/83/84/85/86/87/88/89/90/91/92/93/94/95/96/97/98/99/100/101/102/103/104/105/106/107/108/109/110/111/112/113/114/115/116/117/118/119/120/121/122/123/124/125/126/127/128/129/130/131/132/133/134/135/136/137/138/139/140/141/142/143/144/145/146/147/148/149/150/151/152/153/154/155/156/157/158/159/160/161/162/163/164/165/166/167/168/169/170/171/172/173/174/175/176/177/178/179/180/181/182/183/184/185/186/187/188/189/190/191/192/193/194/195/196/197/198/199/200/201/202/203/204/205/206/207/208/209/210/211/212/213/214/215/216/217/218/219/220/221/222/223/224/225/226/227/228/229/230/231/232/233/234/235/236/237/238/239/240/241/242/243/244/245/246/247/248/249/250/251/252/253/254/255/256/257/258/259/260/261/262/263/264/265/266/267/268/269/270/271/272/273/274/275/276/277/278/279/280/281/282/283/284/285/286/287/288/289/290/291/292/293/294/295/296/297/298/299/300/301/302/303/304/305/306/307/308/309/310/311/312/313/314/315/316/317/318/319/320/321/322/323/324/325/326/327/328/329/330/331/332/333/334/335/336/337/338/339/340/341/342/343/344/345/346/347/348/349/350/351/352/353/354/355/356/357/358/359/360/361/362/363/364/365/366/367/368/369/370/371/372/373/374/375/376/377/378/379/380/381/382/383/384/385/386/387/388/389/390/391/392/393/394/395/396/397/398/399/400/401/402/403/404/405/406/407/408/409/410/411/412/413/414/415/416/417/418/419/420/421/422/423/424/425/426/427/428/429/430/431/432/433/434/435/436/437/438/439/440/441/442/443/444/445/446/447/448/449/450/451/452/453/454/455/456/457/458/459/460/461/462/463/464/465/466/467/468/469/470/471/472/473/474/475/476/477/478/479/480/481/482/483/484/485/486/487/488/489/490/491/492/493/494/495/496/497/498/499/500/501/502/503/504/505/506/507/508/509/510/511/512/513/514/515/516/517/518/519/520/521/522/523/524/525/526/527/528/529/530/531/532/533/534/535/536/537/538/539/540/541/542/543/544/545/546/547/548/549/550/551/552/553/554/555/556/557/558/559/560/561/562/563/564/565/566/567/568/569/570/571/572/573/574/575/576/577/578/579/580/581/582/583/584/585/586/587/588/589/590/591/592/593/594/595/596/597/598/599/600/601/602/603/604/605/606/607/608/609/610/611/612/613/614/615/616/617/618/619/620/621/622/623/624/625/626/627/628/629/630/631/632/633/634/635/636/637/638/639/640/641/642/643/644/645/646/647/648/649/650/651/652/653/654/655/656/657/658/659/660/661/662/663/664/665/666/667/668/669/670/671/672/673/674/675/676/677/678/679/680/681/682/683/684/685/686/687/688/689/690/691/692/693/694/695/696/697/698/699/700/701/702/703/704/705/706/707/708/709/710/711/712/713/714/715/716/717/718/719/720/721/722/723/724/725/726/727/728/729/730/731/732/733/734/735/736/737/738/739/740/741/742/743/744/745/746/747/748/749/750/751/752/753/754/755/756/757/758/759/760/761/762/763/764/765/766/767/768/769/770/771/772/773/774/775/776/777/778/779/780/781/782/783/784/785/786/787/788/789/790/791/792/793/794/795/796/797/798/799/800/801/802/803/804/805/806/807/808/809/810/811/812/813/814/815/816/817/818/819/820/821/822/823/824/825/826/827/828/829/830/831/832/833/834/835/836/837/838/839/840/841/842/843/844/845/846/847/848/849/850/851/852/853/854/855/856/857/858/859/860/861/862/863/864/865/866/867/868/869/870/871/872/873/874/875/876/877/878/879/880/881/882/883/884/885/886/887/888/889/890/891/892/893/894/895/896/897/898/899/900/901/902/903/904/905/906/907/908/909/910/911/912/913/914/915/916/917/918/919/920/921/922/923/924/925/926/927/928/929/930/931/932/933/934/935/936/937/938/939/940/941/942/943/944/945/946/947/948/949/950/951/952/953/954/955/956/957/958/959/960/961/962/963/964/965/966/967/968/969/970/971/972/973/974/975/976/977/978/979/980/981/982/983/984/985/986/987/988/989/990/991/992/993/994/995/996/997/998/999/1000/1001/1002/1003/1004/1005/1006/1007/1008/1009/1010/1011/1012/1013/1014/1015/1016/1017/1018/1019/1020/1021/1022/1023/1024/1025/1026/1027/1028/1029/1030/1031/1032/1033/1034/1035/1036/1037/1038/1039/1040/1041/1042/1043/1044/1045/1046/1047/1048/1049/1050/1051/1052/1053/1054/1055/1056/1057/1058/1059/1060/1061/1062/1063/1064/1065/1066/1067/1068/1069/1070/1071/1072/1073/1074/1075/1076/1077/1078/1079/1080/1081/1082/1083/1084/1085/1086/1087/1088/1089/1090/1091/1092/1093/1094/1095/1096/1097/1098/1099/1100/1101/1102/1103/1104/1105/1106/1107/1108/1109/1110/1111/1112/1113/1114/1115/1116/1117/1118/1119/1120/1121/1122/1123/1124/1125/1126/1127/1128/1129/1130/1131/1132/1133/1134/1135/1136/1137/1138/1139/1140/1141/1142/1143/1144/1145/1146/1147/1148/1149/1150/1151/1152/1153/1154/1155/1156/1157/1158/1159/1160/1161/1162/1163/1164/1165/1166/1167/1168/1169/1170/1171/1172/1173/1174/1175/1176/1177/1178/1179/1180/1181/1182/1183/1184/1185/1186/1187/1188/1189/1190/1191/1192/1193/1194/1195/1196/1197/1198/1199/1200/1201/1202/1203/1204/1205/1206/1207/1208/1209/1210/1211/1212/1213/1214/1215/1216/1217/1218/1219/1220/1221/1222/1223/1224/1225/1226/1227/1228/1229/1230/1231/1232/1233/1234/1235/1236/1237/1238/1239/1240/1241/1242/1243/1244/1245/1246/1247/1248/1249/1250/1251/1252/1253/1254/1255/1256/1257/1258/1259/1260/1261/1262/1263/1264/1265/1266/1267/1268/1269/1270/1271/1272/1273/1274/1275/1276/1277/1278/1279/1280/1281/1282/1283/1284/1285/1286/1287/1288/1289/1290/1291/1292/1293/1294/1295/1296/1297/1298/1299/1300/1301/1302/1303/1304/1305/1306/1307/1308/1309/1310/1311/1312/1313/1314/1315/1316/1317/1318/1319/1320/1321/1322/1323/1324/1325/1326/1327/1328/1329/1330/1331/1332/1333/1334/1335/1336/1337/1338/1339/1340/1341/1342/1343/1344/1345/1346/1347/1348/1349/1350/1351/1352/1353/1354/1355/1356/1357/1358/1359/1360/1361/1362/1363/1364/1365/1366/1367/1368/1369/1370/1371/1372/1373/1374/1375/1376/1377/1378/1379/1380/1381/1382/1383/1384/1385/1386/1387/1388/1389/1390/1391/1392/1393/1394/1395/1396/1397/1398/1399/1400/1401/1402/1403/1404/1405/1406/1407/1408/1409/1410/1411/1412/1413/1414/1415/1416/1417/1418/1419/1420/1421/1422/1423/1424/1425/1426/1427/1428/1429/1430/1431/1432/1433/1434/1435/1436/1437/1438/1439/1440/1441/1442/1443/1444/1445/1446/1447/1448/1449/1450/1451/1452/1453/1454/1455/1456/1457/1458/1459/1460/1461/1462/1463/1464/1465/1466/1467/1468/1469/1470/1471/1472/1473/1474/1475/1476/1477/1478/1479/1480/1481/1482/1483/1484/1485/1486/1487/1488/1489/1490/1491/1492/1493/1494/1495/1496/1497/1498/1499/1500/1501/1502/1503/1504/1505/1506/1507/1508/1509/1510/1511/1512/1513/1514/1515/1516/1517/1518/1519/1520/1521/1522/1523/1524/1525/1526/1527/1528/1529/1530/1531/1532/1533/1534/1535/1536/1537/1538/1539/1540/1541/1542/1543/1544/1545/1546/1547/1548/1549/1550/1551/1552/1553/1554/1555/1556/1557/1558/1559/1560/1561/1562/1563/1564/1565/1566/1567/1568/1569/1570/1571/1572/1573/1574/1575/1576/1577/1578/1579/1580/1581/1582/1583/1584/1585/1586/1587/1588/1589/1590/1591/1592/1593/1594/1595/1596/1597/1598/1599/1600/1601/1602/1603/1604/1605/1606/1607/1608/1609/1610/1611/1612/1613/1614/1615/1616/1617/1618/1619/1620/1621/1622/1623/1624/1625/1626/1627/1628/1629/1630/1631/1632/1633/1634/1635/1636/1637/1638/1639/1640/1641/1642/1643/1644/1645/1646/1647/1648/1649/1650/1651/1652/1653/1654/1655/1656/1657/1658/1659/1660/1661/1662/1663/1664/1665/1666/1667/1668/1669/1670/1671/1672/1673/1674/1675/1676/1677/1678/1679/1680/1681/1682/1683/1684/1685/1686/1687/1688/1689/1690/1691/1692/1693/1694/1695/1696/1697/1698/1699/1700/1701/1702/1703/1704/1705/1706/1707/1708/1709/1710/1711/1712/1713/1714/1715/1716/1717/1718/1719/1720/1721/1722/1723/1724/1725/1726/1727/1728/1729/1730/1731/1732/1733/1734/1735/1736/1737/1738/1739/1740/1741/1742/1743/1744/1745/1746/1747/1748/1749/1750/1751/1752/1753/1754/1755/1756/1757/1758/1759/1760/1761/1762/1763/1764/1765/1766/1767/1768/1769/1770/1771/1772/1773/1774/1775/1776/1777/1778/1779/1780/1781/1782/1783/1784/1785/1786/1787/1788/1789/1790/1791/1792/1793/1794/1795/1796/1797/1798/1799/1800/1801/1802/1803/1804/1805/1806/1807/1808/1809/1810/1811/1812/1813/1814/1815/1816/1817/1818/1819/1820/1821/1822/1823/1824/1825/1826/1827/1828/1829/1830/1831/1832/1833/1834/1835/1836/1837/1838/1839/1840/1841/1842/1843/1844/1845/1846/1847/1848/1849/1850/1851/1852/1853/1854/1855/1856/1857/1858/1859/1860/1861/1862/1863/1864/1865/1866/1867/1868/1869/1870/1871/1872/1873/1874/1875/1876/1877/1878/1879/1880/1881/1882/1883/1884/1885/1886/1887/1888/1889/1890/1891/1892/1893/1894/1895/1896/1897/1898/1899/1900/1901/1902/1903/1904/1905/1906/1907/1908/1909/1910/1911/1912/1913/1914/1915/1916/1917/1918/1919/1920/1921/1922/1923/1924/1925/1926/1927/1928/1929/1930/1931/1932/1933/1934/1935/1936/1937/1938/1939/1940/1941/1942/1943/1944/1945/1946/1947/1948/1949/1950/1951/1952/1953/1954/1955/1956/1957/1958/1959/1960/1961/1962/1963/1964/1965/1966/1967/1968/1969/1970/1971/1972/1973/1974/1975/1976/1977/1978/1979/1980/1981/1982/1983/1984/1985/1986/1987/1988/1989/1990/1991/1992/1993/1994/1995/1996/1997/1998/1999/2000/2001/2002/2003/2004/2005/2006/2007/2008/2009/2010/2011/2012/2013/2014/2015/2016/2017/2018/2019/2020/2021/2022/2023/2024/2025/2026/2027/2028/2029/2030/2031/2032/2033/2034/2035/2036/2037/2038/2039/2040/2041/2042/2043/2044/2045/2046/2047/2048/2049/2050/2051/2052/2053/2054/2055/2056/2057/2058/2059/2060/2061/2062/2063/2064/2065/2066/2067/2068/2069/2070/2071/2072/2073/2074/2075/2076/2077/2078/2079/2080/2081/2082/2083/2084/2085/2086/2087/2088/2089/2090/2091/2092/2093/2094/2095/2096/2097/2098/2099/2100/2101/2102/2103/2104/2105/2106/2107/2108/2109/2110/2111/2112/2113/2114/2115/2116/2117/2118/2119/2120/2121/2122/2123/2124/2125/2126/2127/2128/2129/2130/2131/2132/2133/2134/2135/2136/2137/2138/2139/2140/2141/2142/2143/2144/2145/2146/2147/2148/2149/2150/2151/2152/2153/2154/2155/2156/2157/2158/2159/2160/2161/2162/2163/2164/2165/2166/2167/2168/2169/2170/2171/2172/2173/2174/2175/2176/2177/2178/2179/2180/2181/2182/2183/2184/2185/2186/2187/2188/2189/2190/2191/2192/2193/2194/2195/2196/2197/2198/2199/2200/2201/2202/2203/2204/2205/2206/2207/2208/2209/2210/2211/2212/2213/2214/2215/2216/2217/2218/2219/2220/2221/2222/2223/2224/2225/2226/2227/2228/2229/2230/2231/2232/2233/2234/2235/2236/2237/2238/2239/2240/2241/2242/2243/2244/2245/2246/2247/2248/2249/2250/2251/2252/2253/2254/2255/2256/2257/2258/2259/2260/2261/2262/2263/2264/2265/2266/2267/2268/2269/2270/2271/2272/2273/2274/2275/2276/2277/2278/2279/2280/2281/2282/2283/2284/2285/2286/2287/2288/2289/2290/2291/2292/2293/2294/2295/2296/2297/2298/2299/2300/2301/2302/2303/2304/2305/2306/2307/2308/2309/2310/2311/2312/2313/2314/2315/2316/2317/2318/2319/2320/2321/2322/2323/2324/2325/2326/2327/2328/2329/2330/2331/2332/2333/2334/2335/2336/2337/2338/2339/2340/2341/2342/2343/2344/2345/2346/2347/2348/2349/2350/2351/2352/2353/2354/2355/2356/2357/2358/2359/2360/2361/2362/2363/2364/2365/2366/2367/2368/2369/2370/2371/2372/2373/2374/2375/2376/2377/2378/2379/2380/2381/2382/2383/2384/2385/2386/2387/2388/2389/23
--



High Performance Building Solutions

Tensioned Membrane Structures Available Immediately From Inventory

Schlumberger - Russia

Training Facilities





High Performance Building Solutions

Tensioned Membrane Structures Available Immediately From Inventory

Schlumberger - Canada





High Performance Building Solutions
Tensioned Membrane Structures Available Immediately From Inventory

Sunoco, Conoco Phillips

Lunch and Safety Meeting Rooms





High Performance Building Solutions

Tensioned Membrane Structures Available Immediately From Inventory

Conoco Phillips, Fluor

Gymnasiums





High Performance Building Solutions
Tensioned Membrane Structures Available Immediately From Inventory

Offices

enerPLUS





High Performance Building Solutions
Tensioned Membrane Structures Available Immediately From Inventory

Accommodation





High Performance Building Solutions

Tensioned Membrane Structures Available Immediately From Inventory

Pioneer Natural, Shell

Aircraft Hangars





High Performance Building Solutions

Tensioned Membrane Structures Available Immediately From Inventory

Yukon Zinc, Kobe Steel

Crane lift-able





High Performance Building Solutions

Tensioned Membrane Structures Available Immediately From Inventory

Pioneer Natural Resources, Baker Hughes, P&H MinePro Services, Shell



Superior Engineering

Rust proof aluminum substructure and patented membrane tensioning system provide a reliable building solution even in the harshest environmental conditions.



Speed of Construction

Over 2,000,000 square feet of inventory available for immediate delivery, a Sprung structure can be erected at a rate of up to 2000 sq ft per day.



Short Term Leasing

Our in house leasing provides a cost effective solution for short temporary applications.



Relocatable Design

Ideal for multi use applications

Lower Overall Costs

Sprung structures are engineered to accelerate construction, lower project costs and reduce operating expenses.

Limited Foundations

Foundations not required on structures up to 160' wide. Saves time and money.

Energy efficient Insulation

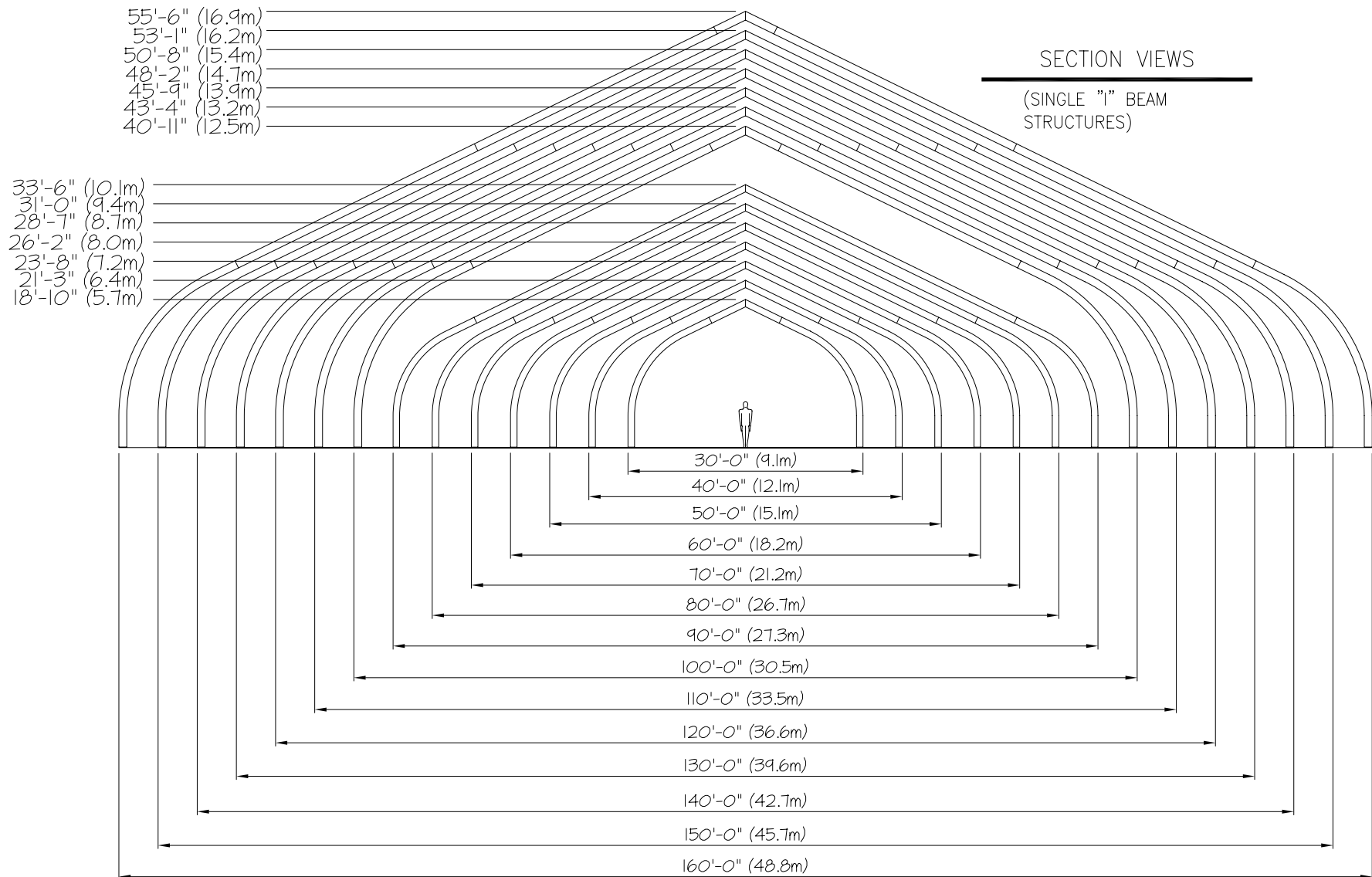
Optional R30 insulation package provides optimum climate control.



High Performance Building Solutions

Tensioned Membrane Structures Available Immediately From Inventory

30' to 160' wide by any length





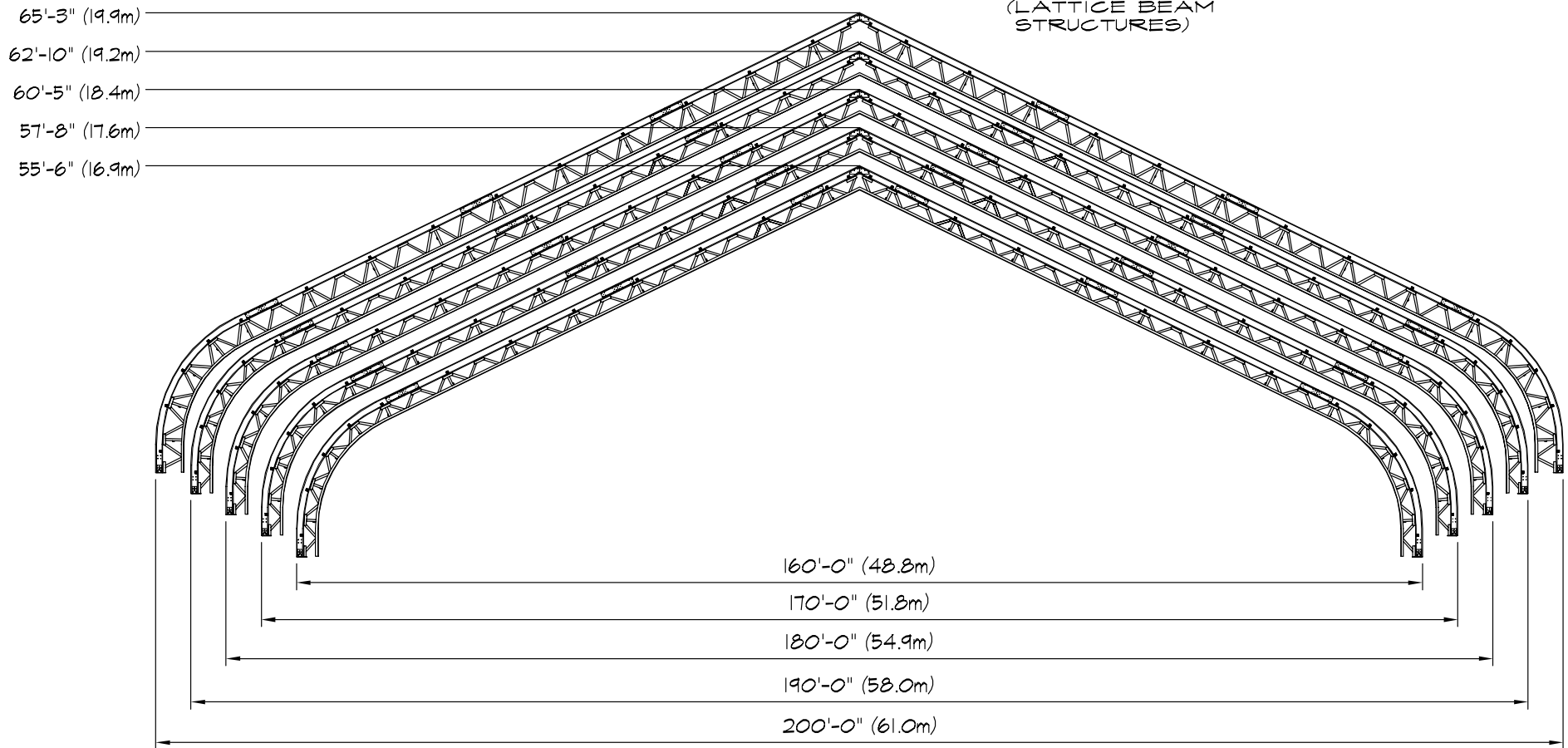
High Performance Building Solutions

160' to 200' wide by any length

Tensioned Membrane Structures Available Immediately From Inventory

SECTION VIEWS

(LATTICE BEAM
STRUCTURES)





High Performance Building Solutions

Tensioned Membrane Structures Available Immediately From Inventory

A Better Way to Build

North American Toll Free:

1 800 528 9899

MINING

www.sprung.com/mining

info@sprung.com

Sprung Instant Structures Inc.

5711 West Dannon Way

(9280 South)

West Jordan, Utah

USA 84081

Toll Free:

1 800 528 9899

Direct Dial:

801 280 1555

Fax:

801 280 7072

Email:

info@sprung.com

Sprung Instant Structures Ltd.

PO Box 62

Aldersyde, Alberta

Canada T0L 0A0

Toll Free:

1 800 528 9899

Direct Dial:

403 601 2292

Fax:

403 601 4833

Email:

info@sprung.com

Sprung Instant Structures Ltd.

Europe

Dublin, Ireland

62 Upper Clanbrassil Street

Dublin 8

Ireland

Direct Dial:

+3531.533.1935

Email:

info@sprung.com **Sprung Instant**

Structures E.C.

PO Box 26105

Manama, Bahrain

Direct Dial:

973 17 730838

Fax:

973 17 730839

Email:

info@sprung.com

**Sprung
Instant
Structures**

info@sprung.com

San Francisco

415 934 9370

Houston

713 782 6888

Atlanta

770 933 1950

Allentown

610 391 9553

Los Angeles

951 461 8240

Toronto

905 829 1600