



CASTECH 
INTERNATIONAL

BY CASTECH PLESSITECH GROUP

SNUB- TECH™

HYDRAULIC SNUBBER
TECHNICAL MANUAL

GRCP.CA

KEY FEATURES

VERSATILE | Snubber is reversible, there is only one model that fits on both sides of the dipper.

HIGH PERFORMANCE | The snubber internals have been designed to improve force distribution on the snubber vane. This provides a more consistent operation on both opening and closing of the door.

COMPATIBILITY | The snubber is compatible on P&H and CAT machines.

ECONOMICAL | The snubbers do not need any maintenance or adjustments during their complete life.

DURABLE | Expected lifetime of the snubbers is at least 10 000 hours in the toughest conditions. They have even reached over 16 000 hours before needing a rebuild.

DUAL ACTION | The snubber action is effective in both directions, on opening and closing of the door. This makes the snubber reversible with no modification. They achieve the same performance in both directions.

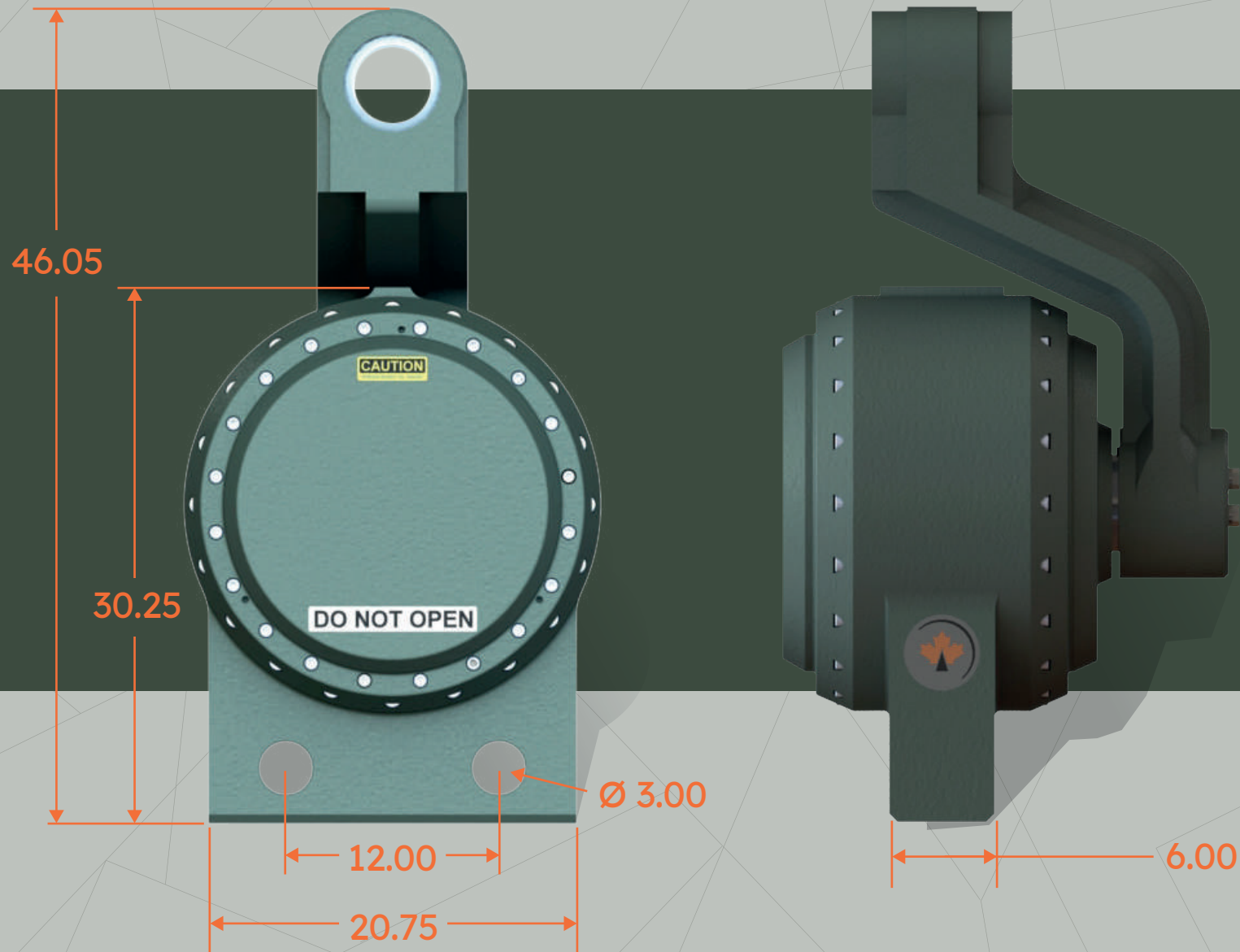
TESTED | Each snubber is cycled at various speeds and temperatures in our test department to ensure quality of the delivered product.

EASY HANDLING | A lifting lug hole is located on top of the snubber for safety and ease of handling.

OIL | Use of Plessitech PS840.1 spec. fluid for improved performance. Oil has been developed for very high-pressure stability and has constant performance on a wide range of temperatures from -50°C to 50°C. The fluid has proven to be efficient even after 10 000 hours of use.

EXTRA SEALING | Our PAPE sealing technology ensure fluid-tight snubbers. This provides enhanced long-term performance and prevents leaks and loss of pressure even under extreme conditions.

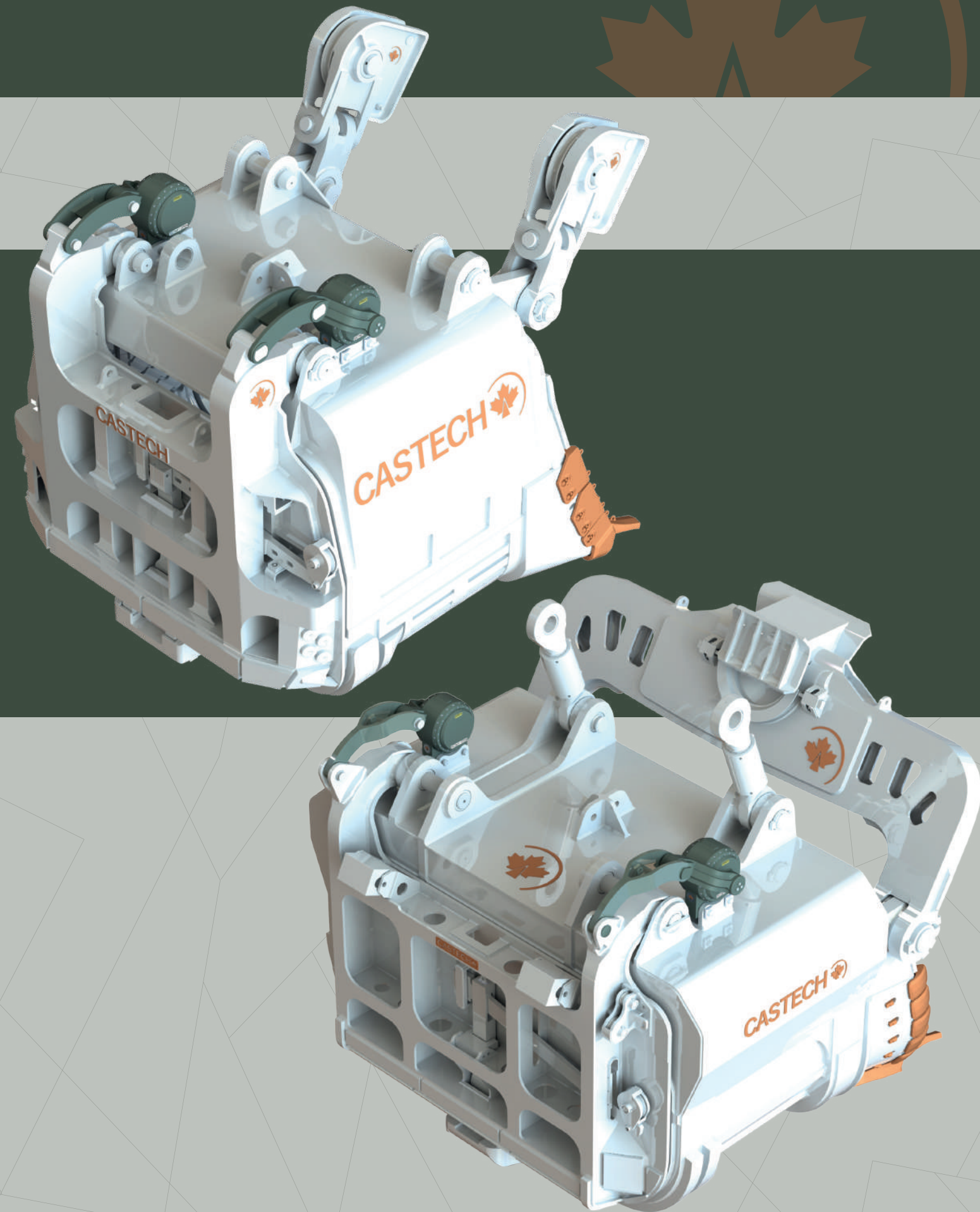
PATENTED DESIGN | The internal design has been developed and improved over the years. The actual design significantly reduces fluid turbulence which allows for flawless snubbing. It is also developed to withstand the high forces induced by braking action, insuring constant arm snubbing effect even after 10 000 hours of use.

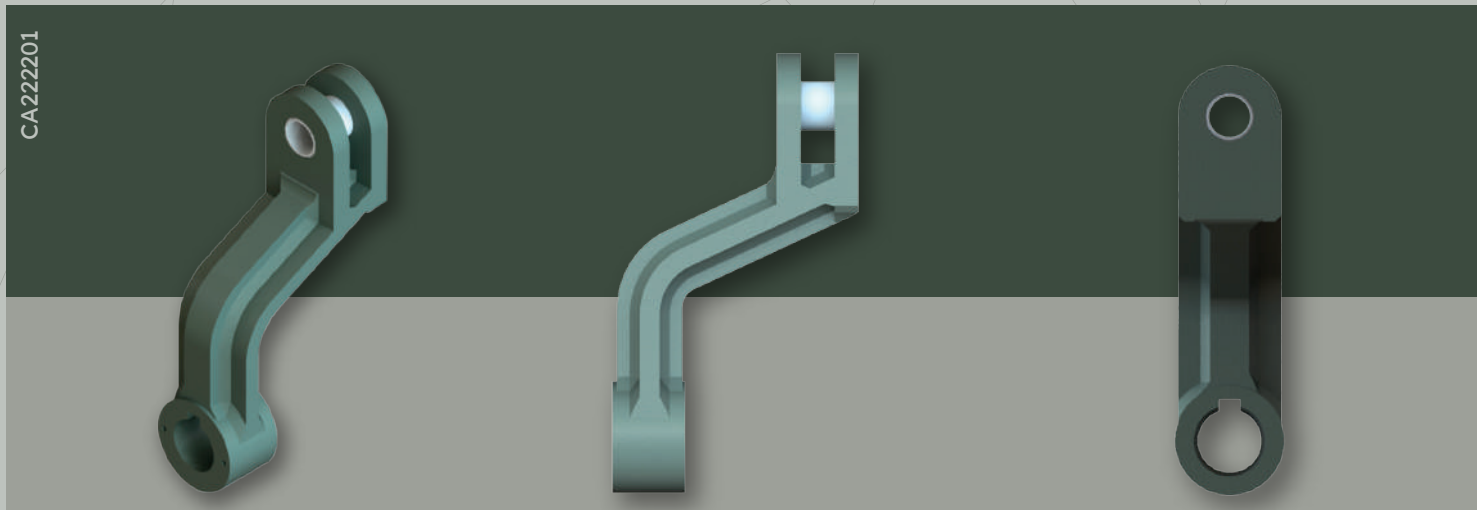
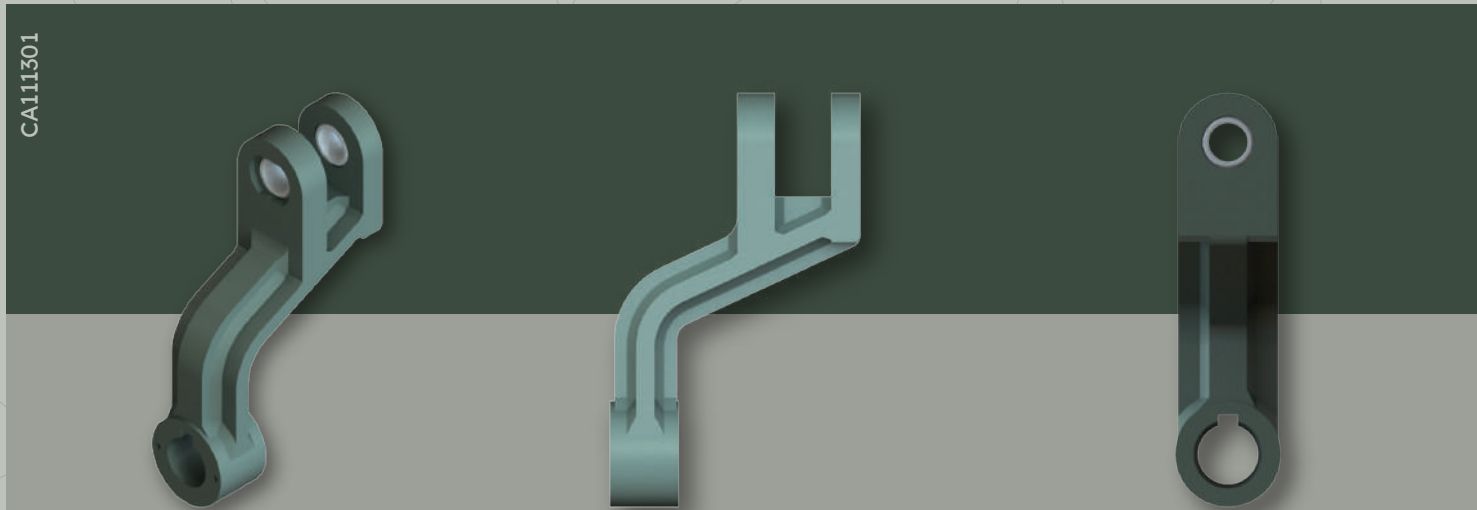
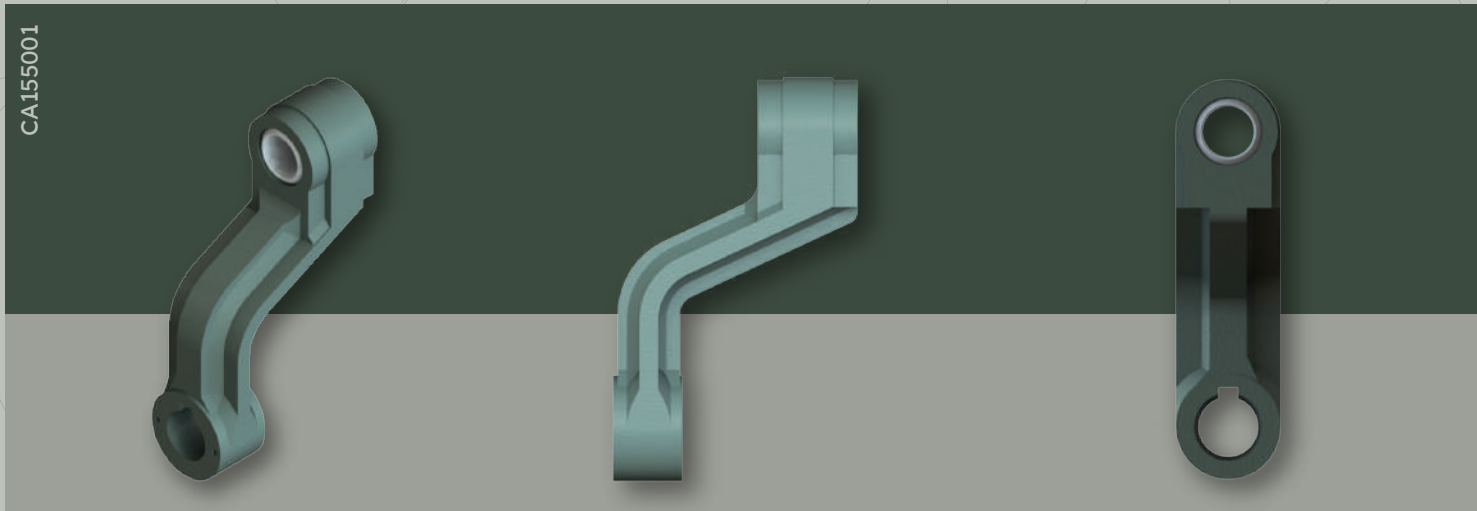


*Dimensions are shown in inches

SNUBBER WEIGHT

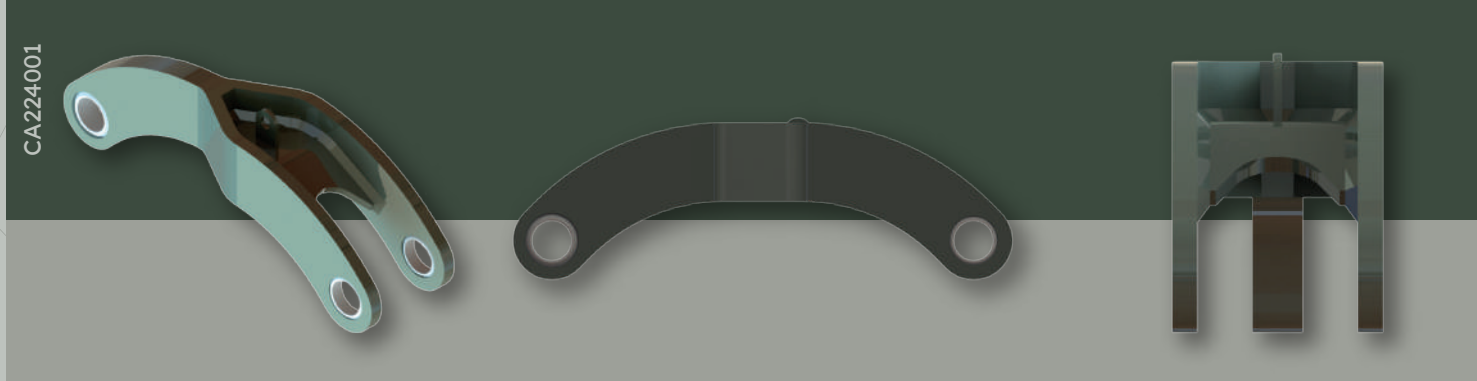
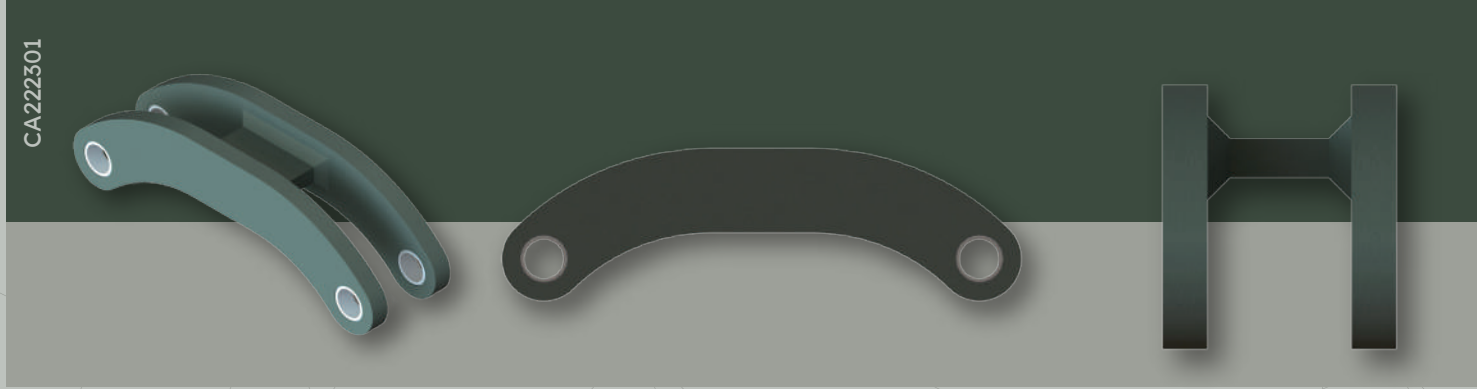
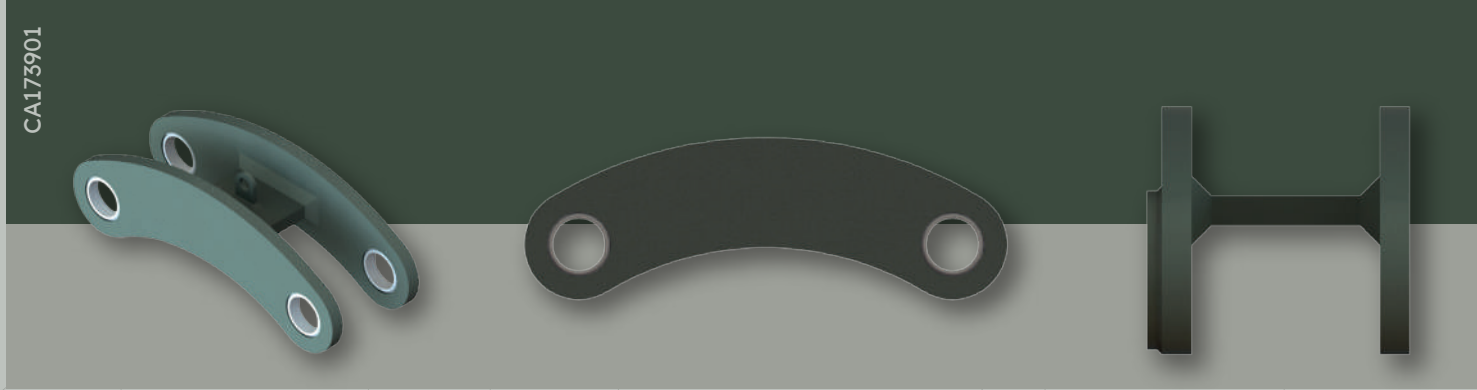
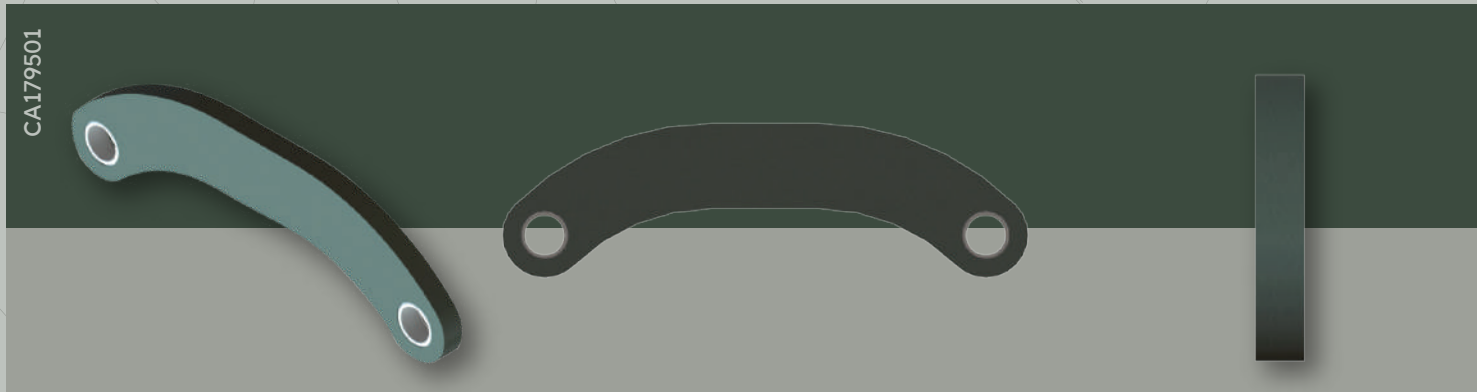
WEIGHT | Each snubber weights approximately 1010 kg (2220 lb) with rotating arm and fluid.





ROTATING ARMS

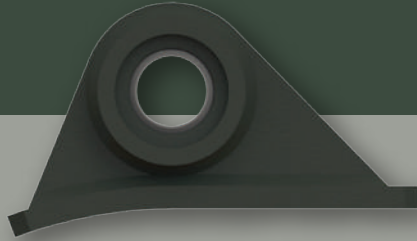
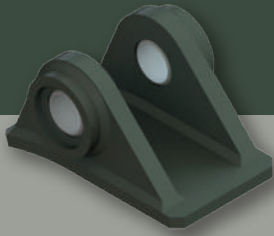
Each rotating arm weights approximately 150 kg (330 lb). The rotating arms are heavy duty, precisely machined and made to last. They are made of high resistance steel in order to minimize weight while improving strength and reliability. All our rotating arms feature easily replaceable bushings.



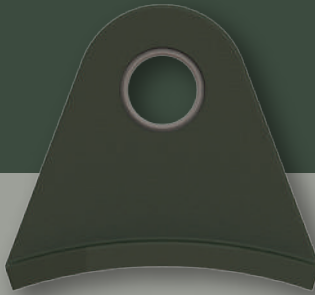
LINK ARMS

We offer various models of link arms to fit any dipper.

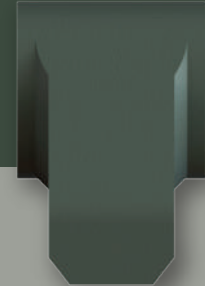
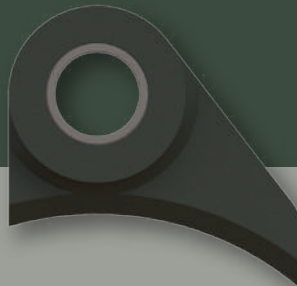
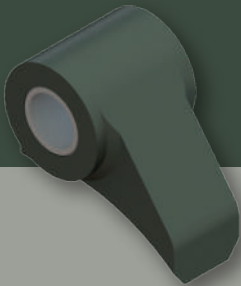
CA083501



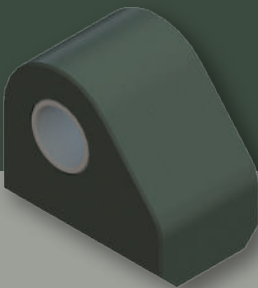
CA162601



CA174201



CA230901



DOOR BRACKETS

We offer various models of door brackets to fit any dipper.